

4

3

2

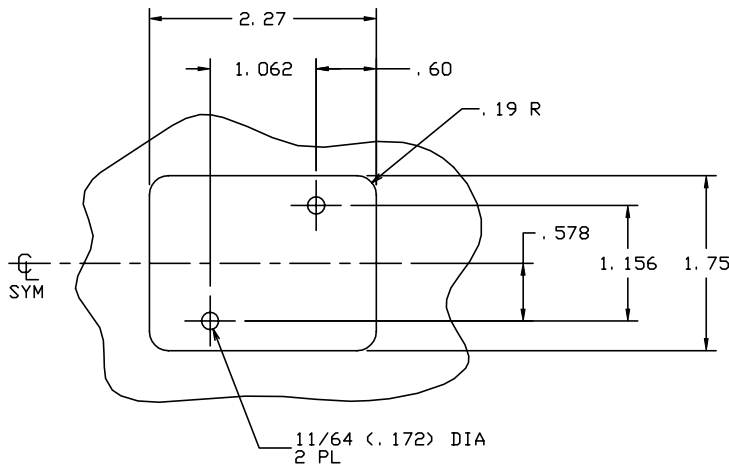
1

THE INFORMATION AND DESIGN HEREIN WAS ORIGINATED BY AND IS THE PROPERTY OF SKYLOCK INDUSTRIES INCORPORATED. SKYLOCK INDUSTRIES INCORPORATED RESERVES ALL PATENT, PROPRIETARY, DESIGN MANUFACTURING, REPRODUCTION, USE AND SALES RIGHTS THERE TO, AND TO ANY ARTICLE DISCLOSED THEREIN EXCEPT TO THE EXTENT RIGHTS ARE EXPRESSLY GRANTED TO OTHERS. THE FOREGOING DOES NOT APPLY TO VENDOR PROPRIETARY PARTS.

REVISIONS				
ZONE	LTR	DESCRIPTION	DATE	APPROVED
	J	REDRAWN, ADDED SHT. 3 PARTS LIST	6-1-98	T. CSIK
	K	SEE ECN K	3-30-00	T. CSIK


NOTES: UNLESS OTHERWISE SPECIFIED.

1. REMOVE ALL BURRS AND BREAK SHARP CORNERS.
2. MAT'L REF.: HANDLE; 6061-T6/T651 PER ASTM B-221, OR EQUIV. BOLT; 303 CRES, COND. A, PER AMS-5643N OR EQUIV. CASE; 302/304 CRES, COND. A, PER ASTM-A240, QQ-S-766, OR EQUIV. SPRING; 302 CRES WIRE, PER ASTM A-580, QQ-W-423, OR EQUIV.
3. FINISH REF.: TOP SURFACE OF HANDLE, AND FLANGE OF CASE; SATIN BRUSH. RECESSED AREA OF CASE; GLASS BEAD PEEN USING #70-140 GLASS BEAD MEDIA AT 50-60 PSI. CRES PARTS; PASSIVATE PER QQ-P-35, TYPE II OR EQUIV.
4. BOLT IS DETENTED IN THE EXTENDED AND RETRACTED POSITIONS.
5. THE FOLLOWING STATIC LOAD IS FOR REFERENCE USE ONLY. IT IS PROVIDED FOR CUSTOMER ENGINEERING TO DETERMINE THE GENERAL SUITABILITY OF THE PRODUCT FOR ITS INTENDED USE. ALTHOUGH SKYLOCK IS PROVIDING THE REFERENCE STATIC LOAD, THE CUSTOMER IS ULTIMATELY RESPONSIBLE FOR CERTIFICATION OF THE PRODUCT FOR ITS SPECIFIC APPLICATION. REFERENCE STATIC LOAD: 600 LBS. MAX.
6. APPLICABLE TO FAA-PMA REPLACEMENT OR MODIFICATION PARTS ONLY. PER FAR 45.15, PARTS WILL BE IDENTIFIED WITH:
 1. FAA-PMA.
 2. SKYLOCK IND. INC.
 3. PART NO.
 4. AIRCRAFT INSTALLATION ELIGIBILITY.



DOOR CUTOUT REF

C	.12	.97	-33	LATCH		120062 -33
C	.12	1.12	-31	LATCH		120062 -31
D	.12	.69	-29	LATCH		120062 -29
C	.22	1.56	-27	LATCH		120062 -27
C	.12	1.06	-25	LATCH		120062 -25
C	.12	1.22	-23	LATCH		120062 -23
C	.090	1.06	-21	LATCH		120062 -21
C	.22	1.31	-19	LATCH		120062 -19
C	.12	1.50	-17	LATCH		120062 -17
E	.22	1.22	-15	LATCH		120062 -15
C	.22	1.12	-13	LATCH		120062 -13
C	.22	1.22	-11	LATCH		120062 -11
C	.22	1.06	-9	LATCH		120062 -9
C	.12	.66	-7	LATCH		120062 -7
C	.12	.81	-5	LATCH		120062 -5
C	.12	.91	-3	LATCH		120062 -3
C	.22	.91	-1	LATCH		120062 -1
BOLT TYPE	B DIM	A DIM	PART NO.	DESCRIPTION		MAKE FROM

PARTS LIST						
UNLESS OTHERWISE SPECIFIED	DRAWN BY	JEE	6-6-78	 SKYLOCK INDUSTRIES INCORPORATED MONROVIA CALIFORNIA U. S. A.	<h2>20062 LATCH</h2>	
DIMENSIONS ARE IN INCHES	CHECKED	T. CSIK	7/26/99			
TOLERANCES ON	ENGR.	T. CSIK	7/26/99			
DECIMALS ANGLES DRILLED HOLES	D. C.	J. VIVIRITO	7/28/99			
.X ± .1 ± 0° 30' AND 10387	WFG	P. MATSUOKA	7/28/99			
.XX ± .03						
.XXX ± .010						
DO NOT SCALE THIS DRAWING						
			SIZE	CODE IDENT. NO.	DRAWING NO.	REV.
			C	51941	20062	K
MANUFACTURE IN ACCORDANCE WITH SKYLOCK IND. INC., QUALITY CONTROL MANUAL QC.001.				SCALE	NONE	VT.
					SHEET 1	OF 2

4

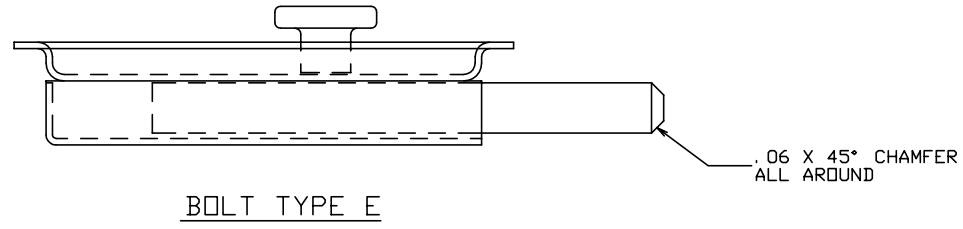
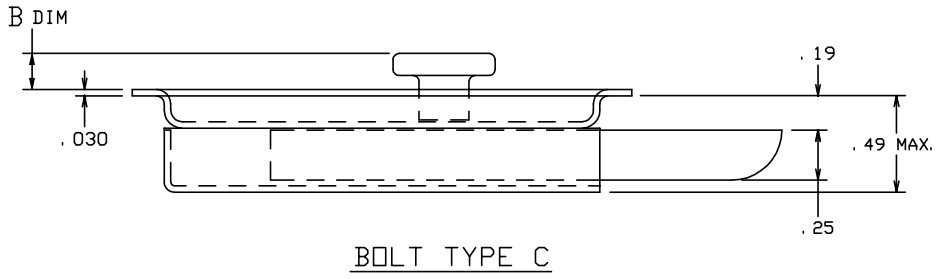
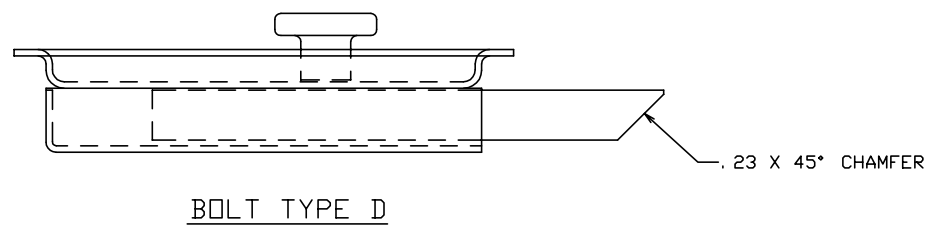
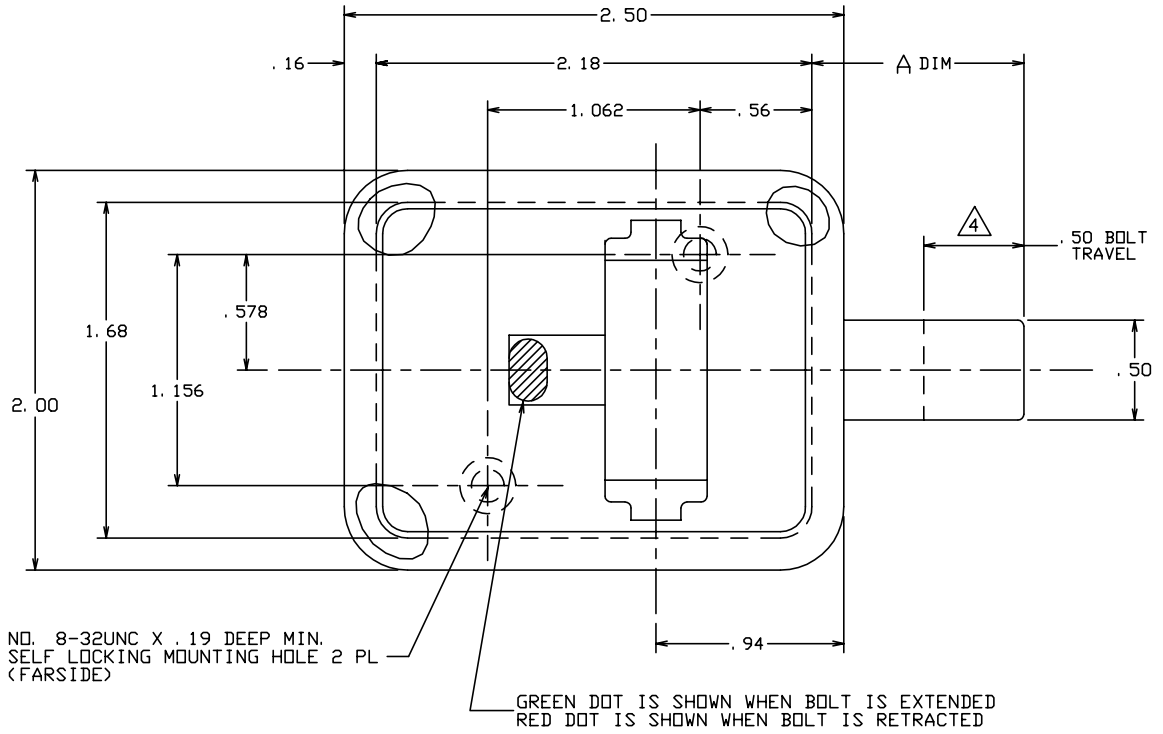
3

2

1

THE INFORMATION AND DESIGN HEREIN WAS ORIGINATED BY AND IS THE PROPERTY OF SKYLOCK INDUSTRIES INCORPORATED. SKYLOCK INDUSTRIES INCORPORATED RESERVES ALL PATENT, PROPRIETARY, DESIGN MANUFACTURING, REPRODUCTION, USE AND SALES RIGHTS THERE TO, AND TO ANY ARTICLE DISCLOSED THEREIN EXCEPT TO THE EXTENT RIGHTS ARE EXPRESSLY GRANTED TO OTHERS. THE FOREGOING DOES NOT APPLY TO VENDOR PROPRIETARY PARTS.

REVISIONS				
ZONE	LTR	DESCRIPTION	DATE	APPROVED
		SEE SHT. 1 FOR NOTES		



SKYLOCK INDUSTRIES INCORPORATED
MONROVIA CALIFORNIA U. S. A.

20062 LATCH

SIZE C	CODE IDENT. NO. 51941	DRAWING NO. 20062	REV. K
SCALE NONE	VT.	SHEET 2	OF 2