

THE INFORMATION AND DESIGN HEREIN WAS ORIGINATED BY AND IS THE PROPERTY OF SKYLOCK INDUSTRIES INCORPORATED. SKYLOCK INDUSTRIES INCORPORATED RESERVES ALL PATENT, PROPRIETARY, DESIGN MANUFACTURING, REPRODUCTION, USE AND SALES RIGHTS THERE TO, AND TO ANY ARTICLE DISCLOSED THEREIN EXCEPT TO THE EXTENT RIGHTS ARE EXPRESSLY GRANTED TO OTHERS. THE FOREGOING DOES NOT APPLY TO VENDOR PROPRIETARY PARTS.

REVISIONS				
ZONE	LTR	DESCRIPTION	DATE	APPROVED
	P	REVISED AND REDRAWN, REVISED G/N 4.	3-12-93	T. CSIK
	Q	ADDED -11	10-6-95	T. CSIK
	R	ADDED -13	2-26-96	T. CSIK
	S	ADDED -4, SHT. 3	7-1-97	T. CSIK
	T	SEE ECN T	3-30-00	T. CSIK

NOTES: UNLESS OTHERWISE SPECIFIED.

- 1. MAT'L REF.: ALL COMP'S: 302/304 CRES, COND. A, PER ASTM-A240, QQ-S-766, OR EQUIV.
- 2. FINISH REF.: PASSIVATE PER AMS-QQ-P-35, TYPE VI, OR VII, OR EQUIV.

3. DECORATIVE FINISH REF.: SATIN BUFF TOP OF CASE AND HANDLE, DIRECTION NOTED.

4. REMOVED.

5. SPRING TO RETURN FLAP TO CLOSED POSITION REGARDLESS OF BOLT POSITION.

6. SPRING TO RETURN FLAP OPEN WHEN BOLT IS NOT PROPERLY ENGAGED.

7. REMOVED

8. 20064-7 ONLY: FLAP & CASE MAT'L; 17-7 CRES COND. A, PER AMS-5643, OR EQUIV. HEAT TREAT TO 210 KSI.

9. DECORATIVE FINISH REF.: PLATE BRASS INT. GOLD. MIRROR FINISH TO MATCH BAC92680 (REF TBCF-14.2981). APPLY ONE COAT SHERMAN WILLIAMS CLEAR ENAMEL F63U1.

10. 20064-1-23 ONLY: BOLT MAT'L: HARD DRAWN BRASS.


11. FINISH REF.: GLASS BEAD PEEN VISIBLE SURFACES OF CASE AND HANDLE USING #70-140 GLASS BEAD MEDIA AT APPROX. 80 PSI.

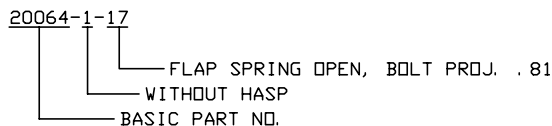
12 PER FAR 45.15. PARTS WILL IDENTIFIED WITH:

- 1. FAA-PMA.
- 2. SKYLOCK IND. INC.
- 3. PART NO.
- 4. AIRCRAFT ELIGIBILITY.

-39	-41	-43	.52
-31	-33	-35	1.06
-25	-27	-29	.68
-19	-21	-23	1.30
-13	-15	-17	.81
-7	-9	-11	.59
-1	-3	-5	.37
NO FLAP SPRING	CLOSED 5	OPEN 6	" A" BOLT PROJ.
SECONDARY DASH NO'S			

-13	LATCH ASSY	<ONE HASP, PADLOCK, HINGED>	11	120064-13
-11	LATCH ASSY	<NO HASP>	11	120064-11
-10	LATCH ASSY	<ONE HASP, PADLOCK, HINGED>		120064-10
-9	LATCH ASSY	<ONE HASP, PADLOCK, HINGED>		120064-9
-7	LATCH ASSY	<NO HASP>	8	120064-7
-5	LATCH ASSY	<TWO HASPS, SLOTTED, FIXED>		120064-5
-4	LATCH ASSY	<ONE HASP, SLOTTED, FIXED>		120064-4
-3	LATCH ASSY	<ONE HASP, SLOTTED, FIXED>		120064-3
-1	LATCH ASSY	<NO HASP>	10	120064-1
PRIMARY DASH NO.		DESCRIPTION		MAKE FROM

PARTS LIST				
UNLESS OTHERWISE SPECIFIED	DRAWN BY	M. FOSTER	4-5-77	 SKYLOCK INDUSTRIES INCORPORATED MONROVIA CALIFORNIA U. S. A.
DIMENSIONS ARE IN INCHES	CHECKED			
TOLERANCES ON	ENGINEER			
DECIMALS ANGLES DRILLED HOLES	MFG.			
.X ± .1 ± 0° 30' AND 10387	QC			<h2>LATCH ASSEMBLY</h2>
.XX ± .03				
.XXX ± .010				
DO NOT SCALE THIS DRAWING				
MATERIAL - FINISH	USED ON	SIZE	CODE IDENT. NO.	DRAWING NO.
		C	51941	20064
NEXT ASSY				REV. T
MANUFACTURE IN ACCORDANCE WITH SKYLOCK IND. INC., QUALITY CONTROL MANUAL QC.001		SCALE	1: 1	VT.
				SHEET 1 OF 3



EXAMPLE PART NO.

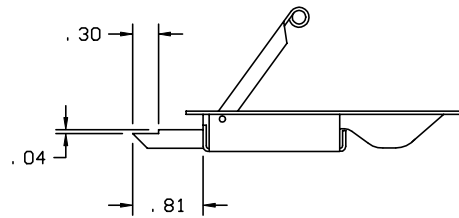
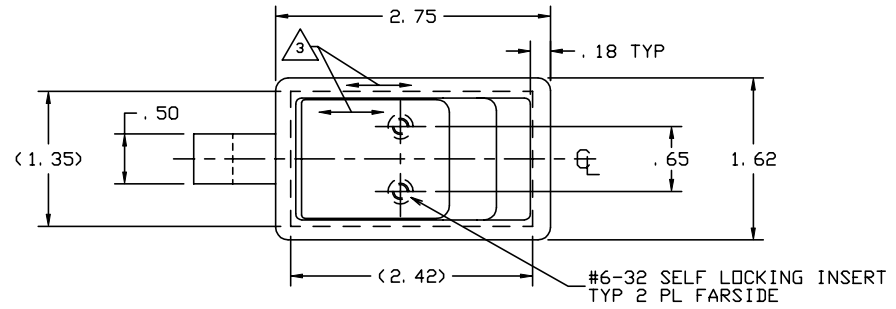
4


3

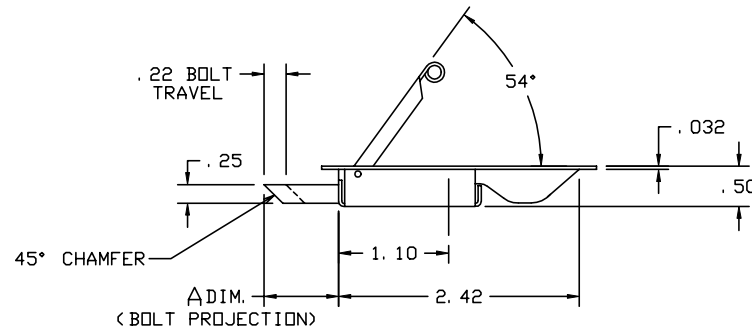
2

1

REVISIONS				
ZONE	LTR	DESCRIPTION	DATE	APPROVED
		SEE SHT. 1 FOR NOTES		



20064-1-37 
 (SAME AS -1 EXCEPT AS SHOWN)



-1, -7, -11 LATCH ASSY (SHOWN)

 SKYLOCK INDUSTRIES INCORPORATED
 MONROVIA CALIFORNIA U. S. A.

LATCH ASSEMBLY

SIZE	CODE IDENT. NO.	DRAWING NO.	REV.
C	51941	20064	T
SCALE	1: 1	VT.	SHEET 2 OF 3

4

3

2

1

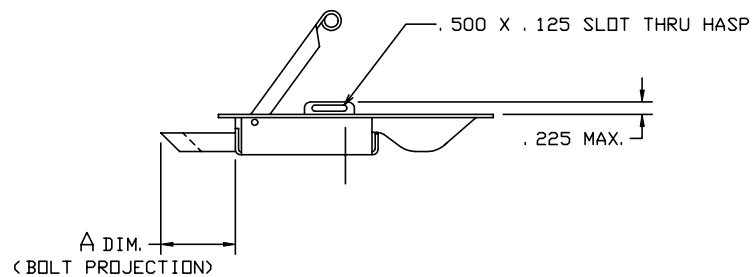
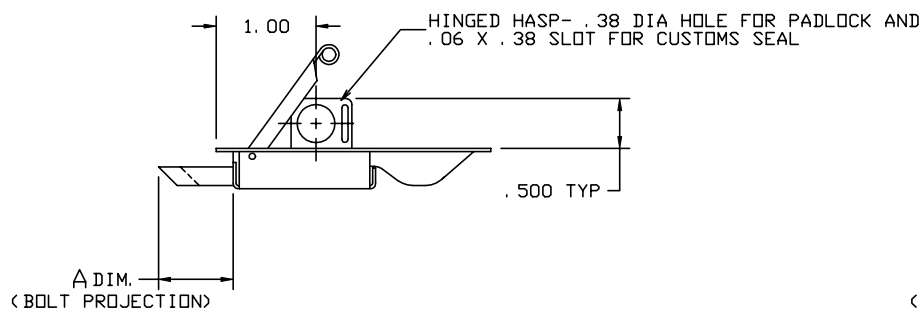
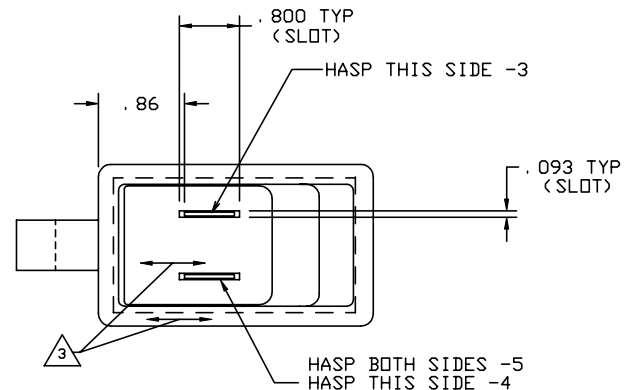
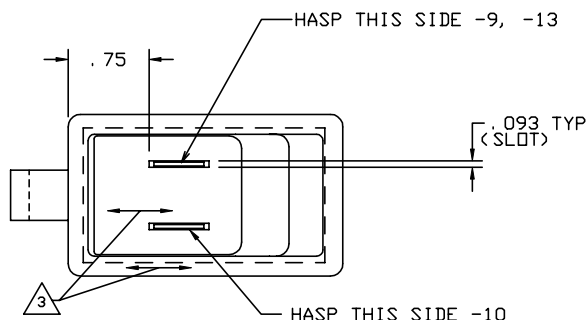
4

3

2


1

REVISIONS				DATE	APPROVED
ZONE	LTR	DESCRIPTION			
		SEE SHT. 1 FOR NOTES			



-9, -10, -13 LATCH ASSY (SHOWN)
 (SAME AS -1 EXCEPT AS SHOWN)

-3, -4, -5 LATCH ASSY (SHOWN)
 (SAME AS -1 EXCEPT AS SHOWN)

 SKYLOCK INDUSTRIES INCORPORATED
 MONROVIA CALIFORNIA U. S. A.

LATCH ASSEMBLY

SIZE C	CODE IDENT. NO. 51941	DRAWING NO. 20064	REV. T
SCALE 1: 1	VT.	SHEET 3	OF 3

4

3

2

1