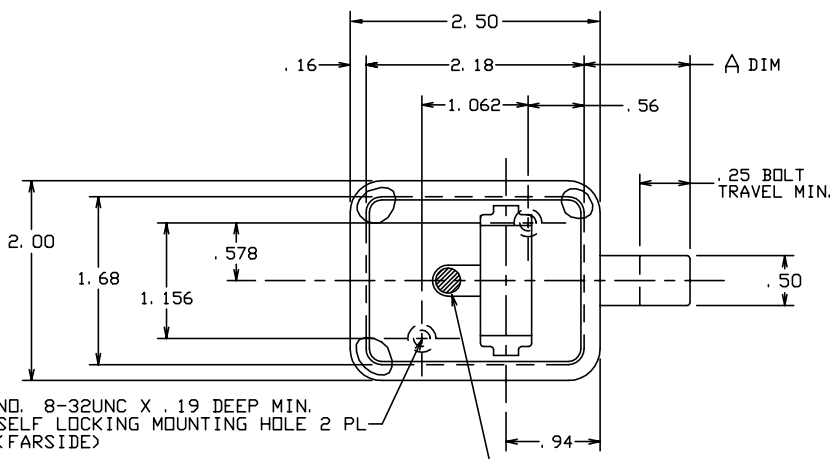
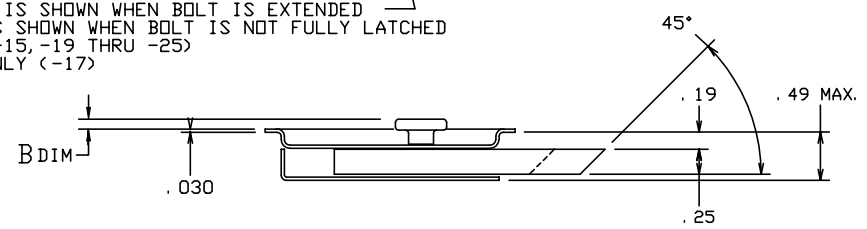


THE INFORMATION AND DESIGN HEREIN WAS ORIGINATED BY AND IS THE PROPERTY OF SKYLOCK INDUSTRIES INCORPORATED. SKYLOCK INDUSTRIES INCORPORATED RESERVES ALL PATENT, PROPRIETARY, DESIGN MANUFACTURING, REPRODUCTION, USE AND SALES RIGHTS THERE TO, AND TO ANY ARTICLE DISCLOSED THEREIN EXCEPT TO THE EXTENT RIGHTS ARE EXPRESSLY GRANTED TO OTHERS. THE FOREGOING DOES NOT APPLY TO VENDOR PROPRIETARY PARTS.

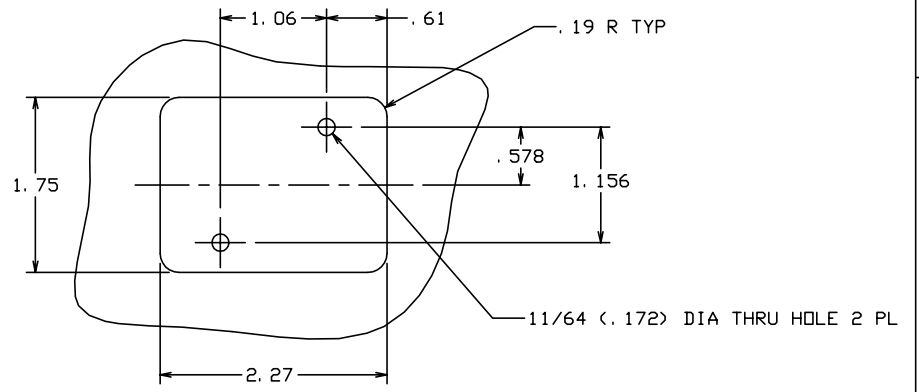
REVISIONS				
ZONE	LTR	DESCRIPTION	DATE	APPROVED
	G	ADDED -19	4-24-92	T. C.
	H	ADDED -21	10-26-93	T. C.
	J	ADDED -23	12-13-93	T. C.
	K	ADDED -25	10-24-96	T. C.
	L	SEE ECN L		



GREEN DOT IS SHOWN WHEN BOLT IS EXTENDED
 RED DOT IS SHOWN WHEN BOLT IS NOT FULLY LATCHED
 (-1 THRU -15, -19 THRU -25)
 RED DOT ONLY (-17)



-1 THRU -25 LATCH



DOOR CUTOUT INFORMATION

6. APPLICABLE TO FAA-PMA REPLACEMENT OR MODIFICATION PARTS ONLY. PER FAR 45.15, PARTS WILL BE IDENTIFIED WITH:
 1. FAA-PMA.
 2. SKYLOCK IND. INC.
 3. PART NO.
 4. AIRCRAFT INSTALLATION ELIGIBILITY.
 5. BOLT IS SPRING LOADED AND ALWAYS FREE TO LATCH.
 4. THE FOLLOWING STATIC LOAD IS FOR REFERENCE USE ONLY. IT IS PROVIDED FOR CUSTOMER ENGINEERING TO DETERMINE THE GENERAL SUITABILITY OF THE PRODUCT FOR ITS INTENDED USE. ALTHOUGH SKYLOCK IS PROVIDING THE REFERENCE STATIC LOAD, THE CUSTOMER IS ULTIMATELY RESPONSIBLE FOR CERTIFICATION OF THE PRODUCT FOR ITS SPECIFIC APPLICATION. REFERENCE STATIC LOAD: 600 LBS. MAX.
 3. DECORATIVE FINISH: SATIN BUFF.
 2. FINISH REF: HANDLE; CLEAR ANODIZE PER MIL-A-8625, TYPE II, CLASS 1. CRES PARTS; PASSIVATE PER AMS-QQ-P-35, TYPE II (303), TYPE VI OR VII (304).
 1. MAT'L REF: HANDLE; 6061-T6/T651 PER ASTM B-221 OR EQUIV. ALL OTHER COMPS; 303 OR 304, CRES, COND. A, PER AMS-5640N (303), AMS-5639E (304). OR EQUIV.
- NOTES: UNLESS OTHERWISE SPECIFIED.

.12	1.06	-25	LATCH		120068-25
.00	1.06	-23	LATCH		120068-23
.12	1.22	-21	LATCH		120068-21
.00	.81	-19	LATCH		120068-19
.12	1.06	-17	LATCH		120068-17
.22	1.06	-15	LATCH		120068-15
.12	.88	-13	LATCH		120068-13
.12	.91	-11	LATCH		120068-11
.12	1.12	-9	LATCH		120068-9
.22	1.22	-7	LATCH		120068-7
.12	.69	-5	LATCH		120068-5
.12	.81	-3	LATCH		120068-3
.22	.81	-1	LATCH		120068-1

B DIM	A DIM	PART NO.	DESCRIPTION	MATERIAL	SIZE	SPECIFICATION	MAKE FROM
PARTS LIST							
UNLESS OTHERWISE SPECIFIED		DRAWN BY T. CSIK		4-24-92		SKYLOCK INDUSTRIES INCORPORATED MONROVIA CALIFORNIA U. S. A.	
DIMENSIONS ARE IN INCHES		CHECKED T. CSIK		7/27/99			
TOLERANCES ON		ENGINEER T. CSIK		7/27/99			
DECIMALS ANGLES DRILLED HOLES		GC J. VIVIRITO		7/28/99			
.X ± .1 ± 0° 30' AND 10387		MFG P. MATSUOKA		7/28/99		LATCH C 51941 20068 L	
.XXX ± .010							
DO NOT SCALE THIS DRAWING							
MATERIAL - FINISH		USED ON		SIZE	CODE IDENT. NO.	DRAWING NO.	REV.
NEXT ASSY				C	51941	20068	L
MANUFACTURE IN ACCORDANCE WITH SKYLOCK IND. INC., QUALITY CONTROL MANUAL QC.001				SCALE	1:1	VT.	SHEET 1 OF 1