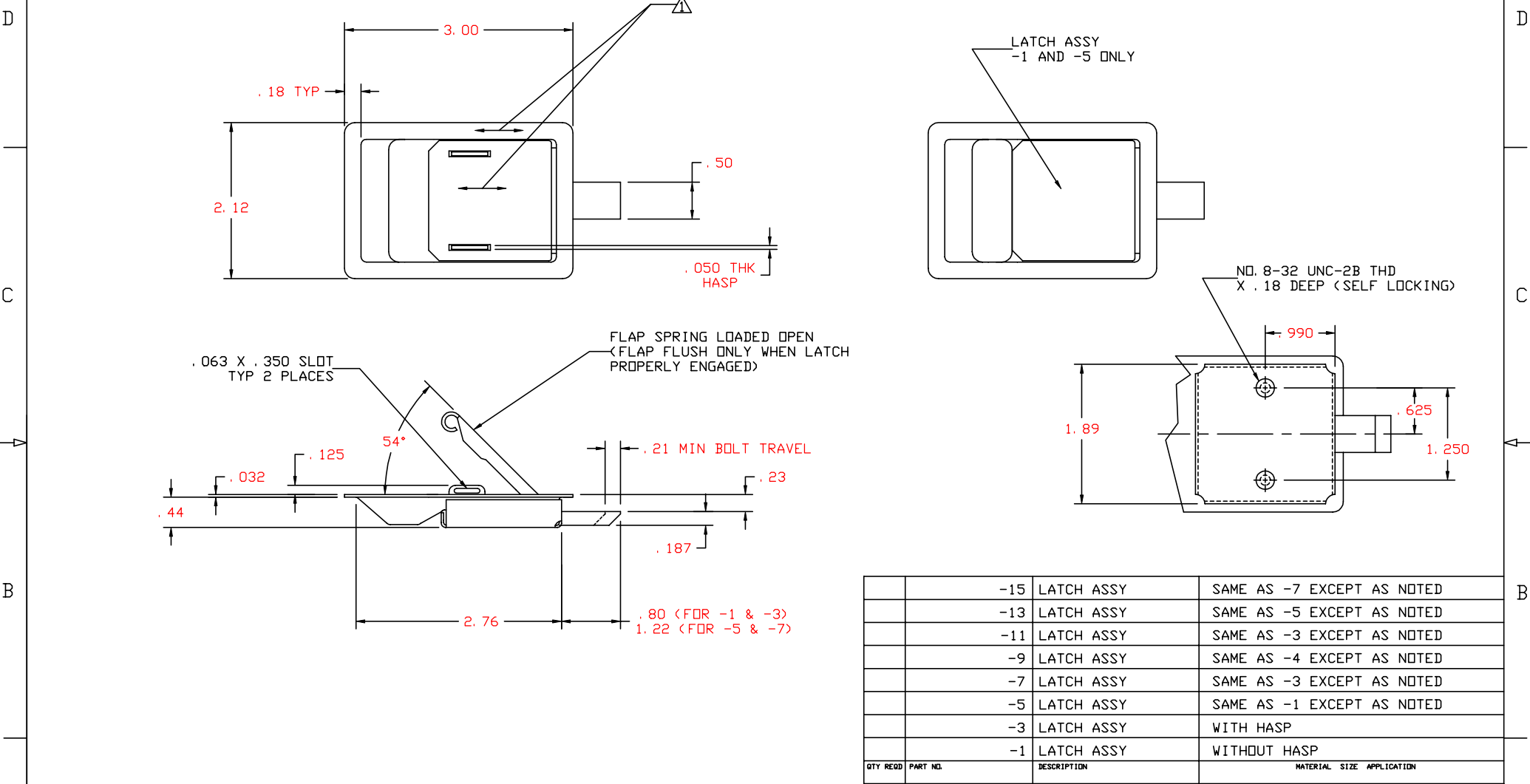


THE INFORMATION AND DESIGN HEREIN WAS ORIGINATED BY AND IS THE PROPERTY OF SKYLOCK INDUSTRIES INCORPORATED. SKYLOCK INDUSTRIES INCORPORATED RESERVES ALL PATENT, PROPRIETARY, DESIGN MANUFACTURING, REPRODUCTION, USE AND SALES RIGHTS THERE TO, AND TO ANY ARTICLE DISCLOSED THEREIN EXCEPT TO THE EXTENT RIGHTS ARE EXPRESSLY GRANTED TO OTHERS. THE FOREGOING DOES NOT APPLY TO VENDOR PROPRIETARY PARTS.

REVISIONS				
ZONE	LTR	DESCRIPTION	DATE	APPROVED
	B	SEE ECN B		



	-15	LATCH ASSY	SAME AS -7 EXCEPT AS NOTED
	-13	LATCH ASSY	SAME AS -5 EXCEPT AS NOTED
	-11	LATCH ASSY	SAME AS -3 EXCEPT AS NOTED
	-9	LATCH ASSY	SAME AS -4 EXCEPT AS NOTED
	-7	LATCH ASSY	SAME AS -3 EXCEPT AS NOTED
	-5	LATCH ASSY	SAME AS -1 EXCEPT AS NOTED
	-3	LATCH ASSY	WITH HASP
	-1	LATCH ASSY	WITHOUT HASP
QTY REQD	PART NO.	DESCRIPTION	MATERIAL SIZE APPLICATION

4. -9 LATCH ASSY THRU -15 FLAP HANDLE SPRING LOADED DOWN AT ALL TIMES.
  3. PROTECTIVE FINISH: BOLT, DRY FILM LUBRICATE PER MIL-L-4610, TYPE I, DRILUBE #2, OR EQUIV. ALL OTHER PARTS, PASSIVATE PER AMS-QQ-P-35, TYPE II, OR EQUIV.
  2. MAT'L: 300 SERIES CRES, PER AMS-5640N, OR EQUIV.
- △ DECORATIVE FINISH: SATIN BUFF LENGTHWISE TO PART SURFACE.  
REMOVE ALL BURRS AND SHARP CORNERS.  
NOTES: UNLESS OTHERWISE SPECIFIED

PARTS LIST			
UNLESS OTHERWISE SPECIFIED	DRAWN BY	M. FORTES	
DIMENSIONS ARE IN INCHES	CHECKED		
TOLERANCES ON	ENGINEER		
DECIMALS	MFG		
ANGLES	QC		
DRILLED HOLES			
.X ± .1			
.XX ± .03			
.XXX ± .010			
DO NOT SCALE THIS DRAWING			
MATERIAL - FINISH	USED ON	SIZE	CODE IDENT. NO.
NEXT ASSY		C	51941
FINAL ASSY			
		DRAWING NO.	REV.
		20078	B
		SCALE	VT.
		NONE	
		SHEET	OF
		1	1



LATCH ASSY