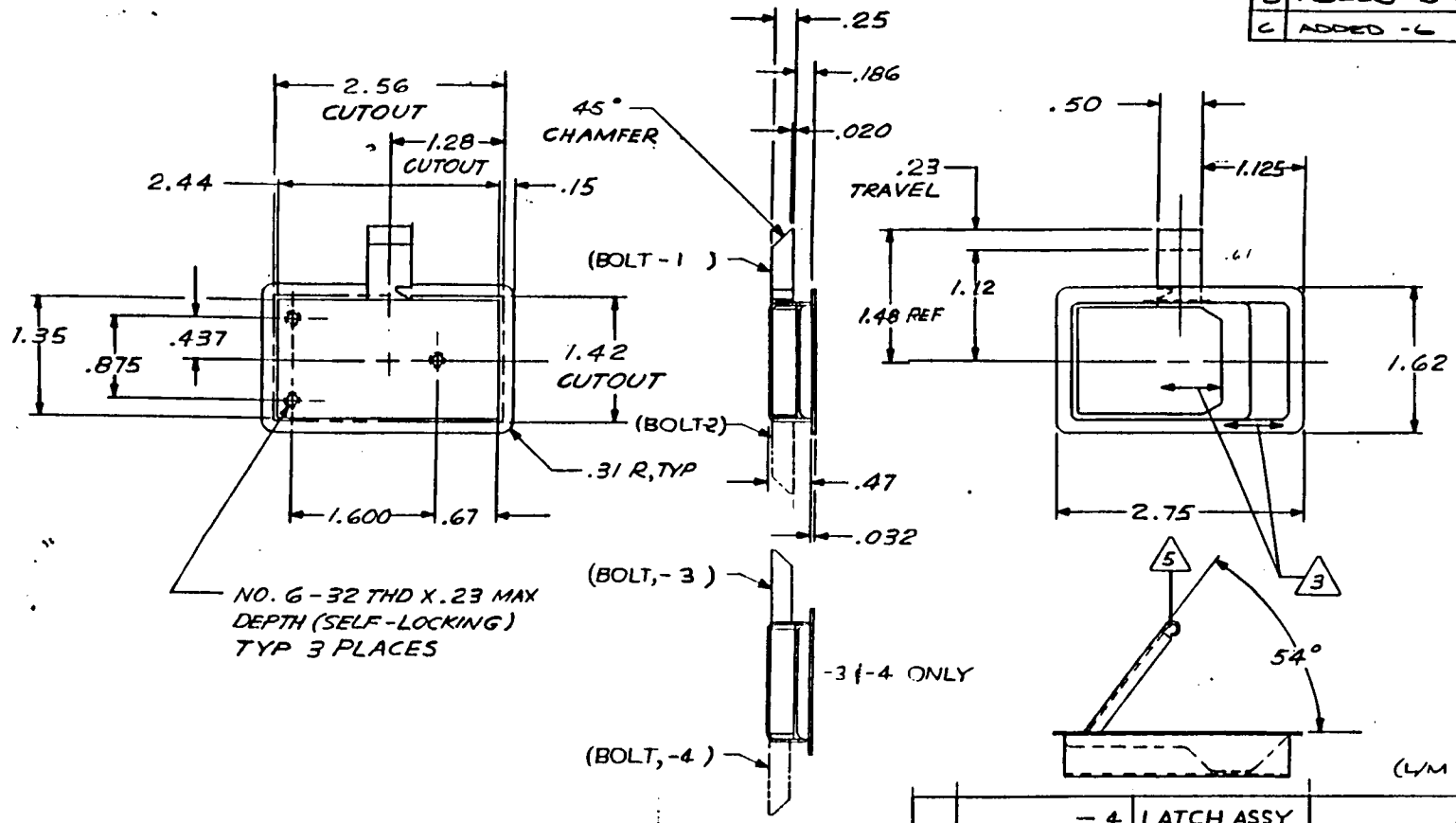


REVISIONS		DATE	BY
SYM	DESCRIPTION		
A	ADD -3 & -4	11-3-78	JEE
B	ADDED -5 & SHT. 2	6-18-82	T.C.
C	ADDED -6	8-30-92	K



6. SPRING TO HOLD FLAP DOWN REGARDLESS OF BOLT POSITION

- 5 LOAD CAPACITY: 250 LB MAX
- 4 STATIC LOAD: 600 LB MAX
- 3 DECORATIVE FINISH: SATIN BUFF
- 2 FINISH: CRES PARTS; PASSIVATE
- 1 MATL: BOLT; BRASS. SLIDE SHOES AND WEAR STRIP; PLASTIC. ALL OTHER PARTS 300 SERIES CRES

NOTES: UNLESS OTHERWISE SPECIFIED

PART NUMBER	DESCRIPTION	MATERIAL OR NOTE
- 4	LATCH ASSY	1 2 LH
- 3	LATCH ASSY	1 2 RH
- 2	LATCH ASSY (OPP)	1 2 LH
- 1	LATCH ASSY (SHOWN)	1 2 RH

REQD		LIST OF MATERIAL	
UNLESS OTHERWISE NOTED DIMENSIONS ARE IN INCHES. TOLERANCES ON DECIMALS XX ± .03 XXX ± .010 ANGLES ± 0° 30' DRILLED HOLES PER ANSI B31.1		CONTRACT NO.	
SURFACE ROUGHNESS		DRAFTSMAN M. FOSTER 5-478	
HEAT TREAT		CHECKER	
FINISH		ENGINEER Maurice Foster 5-478	
INSPECT		PROD. APPD Dell 5-478	
REF. NO.		APPROVAL Maurice Foster 5-478	
NEXT ASSY		USED ON	
APPLICATION		BY KYLOCK INDUSTRIES, INC. BALDWIN PARK, CALIFORNIA	
		LATCH ASSEMBLY	
		SIZE	CODE IDENT NO.
		C 51941	20113
		SCALE	WT CALC WT ACT SHEET
		1/1	105.2

