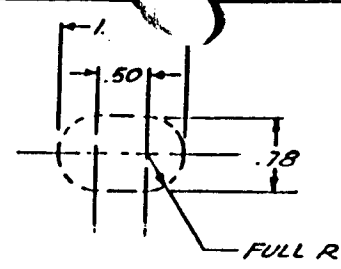
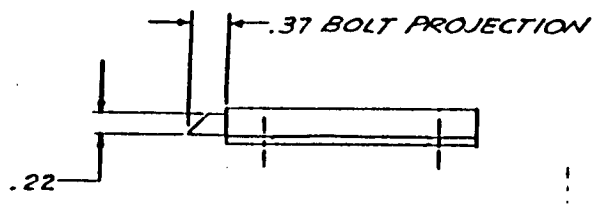
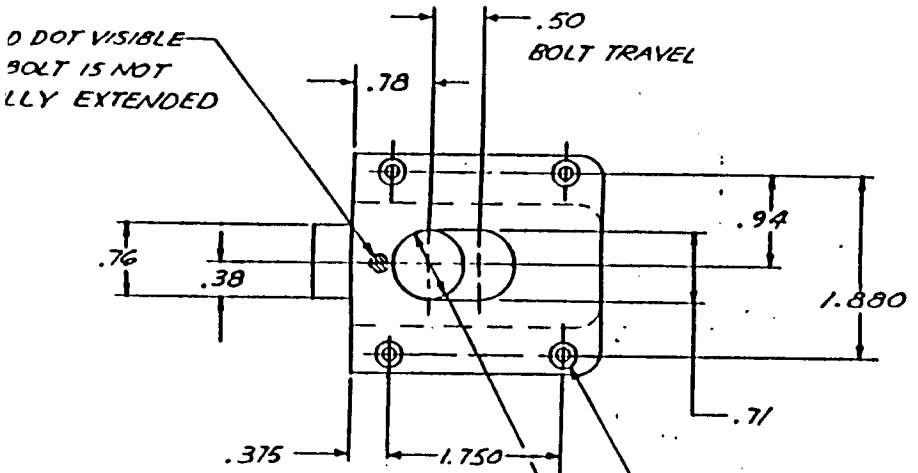


REVISIONS			DATE	BY
SYM	DESCRIPTION	DISP	EXIST	APPROVAL
EFFECTIVE ON				



DOOR CUTOUT INFORMATION

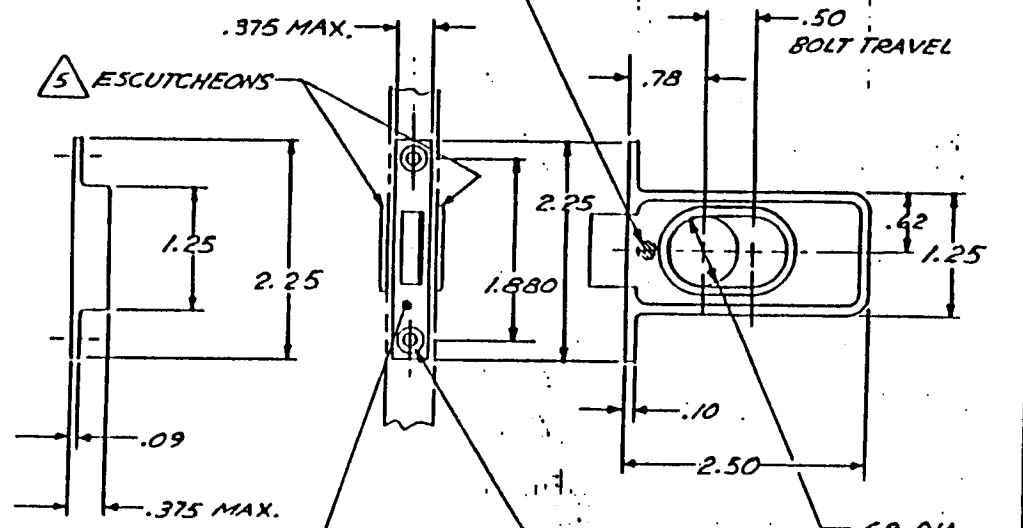


0 DOT VISIBLE  
BOLT IS NOT  
FULLY EXTENDED

NO. 28 (.140) DIA  
CSK 100° X .279 DIA.  
4 PLACES

- 3 LATCH ASSY  
(SAME AS -1 EXCEPT AS  
SHOWN)

.69 DIA FINGER  
PULL THRU



RED DOT VISIBLE IF BOLT  
IS NOT FULLY EXTENDED

5 ESCUTCHEONS

-1 LATCH ASSY

ESCUTCHEONS ARE OPTIONAL AND HAVE TO BE  
PROCURED AS A SEPARATE ITEM.

OPERATION: RETRACT FINGER PULL .50 TO  
DISENGAGE BOLT. BOLT IS HELD IN PLACE BY  
DETENT IN EXTENDED AND RETRACTED POSITION

DECORATIVE FINISH: SATIN BUFF AND  
CLEAR ANODIZED.

FINISH: ALUM PARTS; ANODIZED  
GRES PARTS; PASSIVATE

MATL: HOUSING AND BOLT; ALUM ALY (6061-T6)  
OTHER PARTS GRES.

NOTES: UNLESS OTHERWISE SPECIFIED

PART NUMBER	DESCRIPTION	MATERIAL OR NOTE
-3	LATCH ASSY	1 2
-1	LATCH ASSY	1 2

RECD		LIST OF MATERIAL	
UNLESS OTHERWISE NOTED DIMENSIONS ARE IN INCHES. TOLERANCES ON DECIMALS XX ± .03 300 ± .010 ANGLES ± 0° 30'		CONTRACT NO.	
SURFACE ROUGHNESS		DRAFTSMAN	
HEAT TREAT		CHECKER	
FINISH		ENGINEER	
INSPECT		PROD. APPD	
REF. NO.		APPROVAL	
NEXT ASSY		USED ON	

SKYLOCK INDUSTRIES, INC.  
BALDWIN PARK, CALIFORNIA

FINGER LATCH ASSEMBLY  
DEAD BOLT

SIZE CODE IDENT NO.  
C 51941 20116