

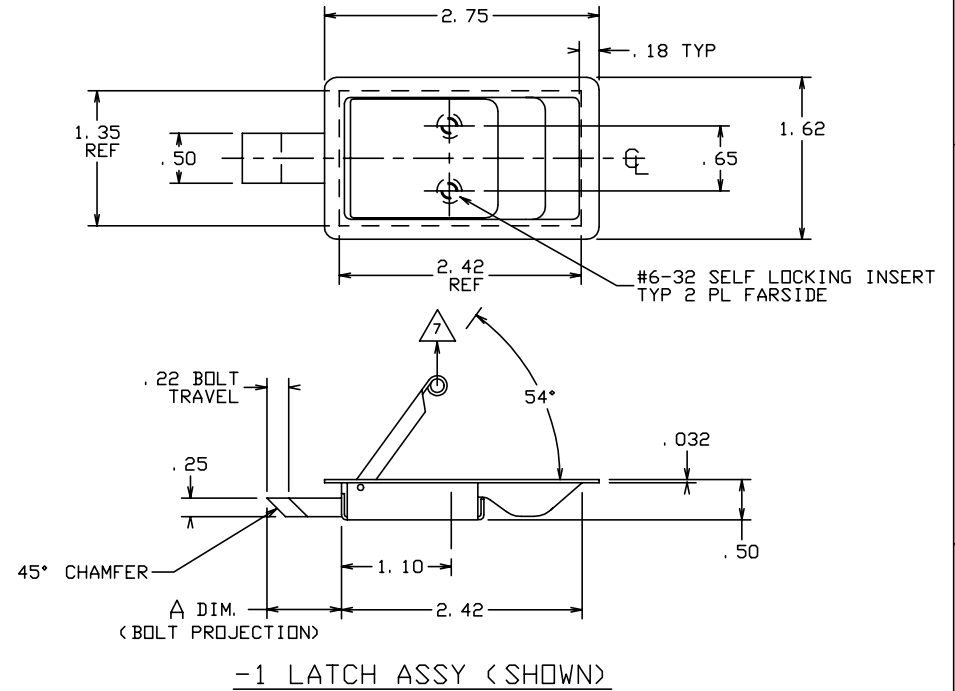
THE INFORMATION AND DESIGN HEREIN WAS ORIGINATED BY AND IS THE PROPERTY OF SKYLOCK INDUSTRIES INCORPORATED. SKYLOCK INDUSTRIES INCORPORATED RESERVES ALL PATENT, PROPRIETARY, DESIGN MANUFACTURING, REPRODUCTION, USE AND SALES RIGHTS THERE TO, AND TO ANY ARTICLE DISCLOSED THEREIN EXCEPT TO THE EXTENT RIGHTS ARE EXPRESSLY GRANTED TO OTHERS. THE FOREGOING DOES NOT APPLY TO VENDOR PROPRIETARY PARTS.

REVISIONS				
ZONE	LTR	DESCRIPTION	DATE	APPROVED
	E	REVISED AND REDRAWN, REVISED G/N 4.	3-12-93	T. CSIK

NOTES: UNLESS OTHERWISE SPECIFIED.

1. MAT'L: ALL COMP'S: 300 SERIES CRES.
2. FINISH: PASSIVATE.
3. DECORATIVE FINISH: SATIN BUFF TOP OF CASE AND HANDLE.
4. NOMINAL LOAD POINT IS .250" FROM TIP OF BOLT, STATIC LOAD IS 800 LBS. MAX. AT NOMINAL LOAD POINT. LATCHES WITH BOLT PROJECTION LONGER THAN .37" REQUIRE REINFORCEMENT IN PANEL/DOOR EDGE TO SUPPORT BOLT LENGTH.

- 5 SPRING TO RETURN FLAP TO CLOSED POSITION REGARDLESS OF BOLT POSITION.
- 6 SPRING TO RETURN FLAP OPEN WHEN BOLT IS NOT PROPERLY ENGAGED.
- 7 LOAD CAPACITY: 250 LBS. MAX.



-19	-21	-23	1.30
-13	-15	-17	.81
-7	-9	-11	.59
-1	-3	-5	.37
NO FLAP SPRING	CLOSED 5	OPEN 6	*A' BOLT PROJ.
SECONDARY DASH NO'S			

THIRD DASH NO. -IF APPLICABLE ADD -C FOR BRIGHT BUFF AND CHROME PLATE

20124-1-17-C
 FINISH: BRIGHT BUFF AND CHROME PLATE
 FLAP SPRING OPEN, BOLT PROJ. .81
 WITHOUT HASP
 BASIC PART NO.

EXAMPLE PART NO.

-10	LATCH ASSY	<ONE HASP, PADLOCK, HINGED>
-9	LATCH ASSY	<ONE HASP, PADLOCK, HINGED>
-8	LATCH ASSY	<ONE HASP, PADLOCK, HINGED>
-7	LATCH ASSY	<ONE HASP, PADLOCK, HINGED>
-5	LATCH ASSY	<TWO HASPS, SLOTTED, FIXED>
-3	LATCH ASSY	<ONE HASP, SLOTTED, FIXED>
-1	LATCH ASSY	<NO HASP>
PRIMARY DASH NO.	DESCRIPTION	

PARTS LIST		DRAWN BY M. FOSTER 5-27-73		SKYLOCK INDUSTRIES INCORPORATED MONROVIA CALIFORNIA U.S.A.													
UNLESS OTHERWISE SPECIFIED		CHECKED		LATCH ASSEMBLY													
DIMENSIONS ARE IN INCHES		ENGINEER															
TOLERANCES ON		PROJECT															
DECIMALS ANGLES DRILLED HOLES		APPROVAL M. FOSTER 5-27-73															
.X ± .1 ± 0° 30' AND 10387		APPROVAL		<table border="1"> <tr> <td>SIZE</td> <td>CODE IDENT. NO.</td> <td>DRAWING NO.</td> <td>REV.</td> </tr> <tr> <td>C</td> <td>51941</td> <td>20124</td> <td>E</td> </tr> <tr> <td>SCALE</td> <td>1:1</td> <td>VT.</td> <td>SHEET 1 OF 2</td> </tr> </table>		SIZE	CODE IDENT. NO.	DRAWING NO.	REV.	C	51941	20124	E	SCALE	1:1	VT.	SHEET 1 OF 2
SIZE	CODE IDENT. NO.	DRAWING NO.	REV.														
C	51941	20124	E														
SCALE	1:1	VT.	SHEET 1 OF 2														
DO NOT SCALE THIS DRAWING		MATERIAL - FINISH		USED ON													
NEXT ASSY		FINAL ASSY															

4

3

2

1

REVISIONS				DATE	APPROVED
ZONE	LTR	DESCRIPTION			
		SEE SHT. 1 FOR NOTES			

D

D

C

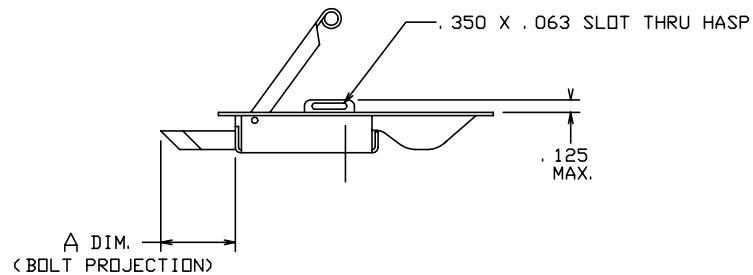
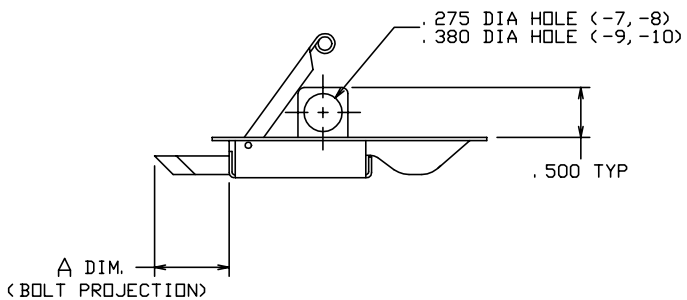
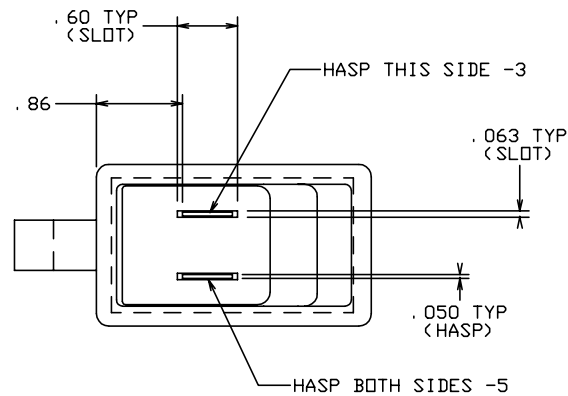
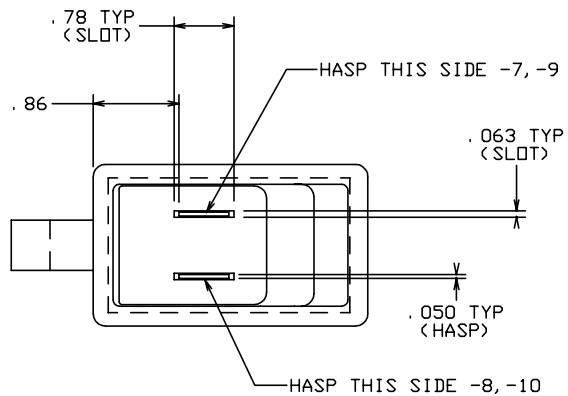
C

B

B

A

A



-7, -8, -9, -10 LATCH ASSY (SHOWN)
 (SAME AS -1 EXCEPT AS SHOWN)

-3, -5 LATCH ASSY (SHOWN)
 (SAME AS -1 EXCEPT AS SHOWN)

SKYLOCK INDUSTRIES INCORPORATED
 MONROVIA CALIFORNIA U. S. A.

LATCH ASSEMBLY

SIZE	CODE IDENT. NO.	DRAWING NO.	REV.
C	51941	20124	E
SCALE	1: 1	VT.	SHEET 2 OF 2

4

3

2

1