

4

3

2

1

THE INFORMATION AND DESIGN HEREIN WAS ORIGINATED BY AND IS THE PROPERTY OF SKYLOCK INDUSTRIES INCORPORATED. SKYLOCK INDUSTRIES INCORPORATED RESERVES ALL PATENT, PROPRIETARY, DESIGN MANUFACTURING, REPRODUCTION, USE AND SALES RIGHTS THERE TO, AND TO ANY ARTICLE DISCLOSED THEREIN EXCEPT TO THE EXTENT RIGHTS ARE EXPRESSLY GRANTED TO OTHERS. THE FOREGOING DOES NOT APPLY TO VENDOR PROPRIETARY PARTS.

REVISIONS				
ZONE	LTR	DESCRIPTION	DATE	APPROVED
	V	SEE ECN V FOR NOTES	12/17/98	T. CSIK

QTY	REF	QTY	REF	QTY	REF	DESCRIPTION	MATERIAL	SIZE	APPLICATION
47.135	28.948			-443		DOOR BOLTING SYS			△7 △9 △10 SHOWN
39.85	39.85			-441					(S/A -489 EXCEPT HANDLE IS FLUSH)
39.85	39.85			-440					OPP
39.85	39.85			-439					△7 △9 △10 SHOWN
15.62	26.60			-437					OPP
22.72	22.72			-435					△9 △10 SHOWN
34.00	34.00			-433					SHOWN
6.14	6.14			-431					SHOWN
30.58	30.58			-430					SHOWN
22.72	22.72			-429					△9 OPP
25.568	25.568			-427					△9 OPP
26.88	26.88			-426					△9 SHOWN
26.88	26.88			-425					△9 OPP
25.93	25.93			-424					△9 OPP
-	17.56			-423					△9 SHOWN
23.00	23.00			-422					△9 OPP
47.135	12.00			-420					OPP
47.135	12.00			-419					SHOWN
32.75	12.00			-417					SHOWN
22.88	12.00			-416					OPP
22.88	12.00			-415					SHOWN
37.32	12.00			-414					OPP
37.32	12.00			-413					SHOWN
17.32	34.69			-411					SHOWN
29.38	17.56			-409					SHOWN
29.38	17.44			-407					SHOWN
28.94	17.44			-405					SHOWN
28.94	19.22			-403					SHOWN
6.14	6.14			-402					△8 SHOWN
4.83	4.83			-401		DOOR BOLTING SYS			△8 SHOWN

11. PER FAR 45.15. PARTS WILL IDENTIFIED WITH:
1. FAA-PMA.
 2. SKYLOCK IND. INC.
 3. PART NO.
 4. AIRCRAFT ELIGIBILITY.

△10 SYSTEM HAS GREEN DOT TO INDICATE ENGAGEMENT.

△9 USE WITH 20177-3 BACKPLATE.

△8 HANDLE AND TEE BAR ARE RUBBER COATED BLACK.

△7 SYSTEM HAS RED DOT TO INDICATE DISENGAGEMENT.

6. BOLTING SYSTEM DETENTED IN OPEN & CLOSED POSITIONS.

△5 HANDLE TO BE SPRING LOADED CLOSED (ALL SYSTEMS).

4. REFERENCE DECORATIVE FINISH: CASE, HANDLE & TEE BAR; SATIN BRUSHED LENGTHWISE TO PART SURFACE.

3. REFERENCE FINISH: ALUM PARTS: CLEAR ANODIZE PER MIL-A-8625, TYPE II, CLASS 1. CRES PARTS; PASSIVATE PER AMS-QQ-P-35, TYPE II.

2. REFERENCE MAT'L: "D" HANDLE & TEE BAR: 6061-T6/T651 PER ASTM B-221, OR EQUIV. ALL OTHER PARTS: 300 SERIES CRES, PER AMS-5640N, ASTM-A240, QQ-S-766, OR EQUIV.

1. REMOVE ALL BURRS AND SHARP CORNERS.

NOTES: UNLESS OTHERWISE SPECIFIED

PARTS LIST		DRAWN BY		JEE		4/13/88	
UNLESS OTHERWISE SPECIFIED		CHECKED		D. VO		12/15/98	
DIMENSIONS ARE IN INCHES		ENGINEER		T. CSIK		12/17/98	
TOLERANCES ON		MFG		P. MATSUOKA		12/28/98	
DECIMALS ANGLES DRILLED HOLES		QC		J. VIVIRITO		12/29/98	
.X ± .1							
.XX ± .03							
.XXX ± .010							
DO NOT SCALE THIS DRAWING							
MATERIAL - FINISH		USED ON		SIZE		CODE IDENT. NO.	
NEXT ASSY				C		51941	
MANUFACTURE IN ACCORDANCE WITH SKYLOCK IND, INC QUALITY CONTROL MANUAL QC 001		SCALE		1: 1		DRAWING NO.	
						20201	
						REV.	
						V	
						SHEET 1 OF 2	



DOOR BOLTING SYS-2 POINT

4

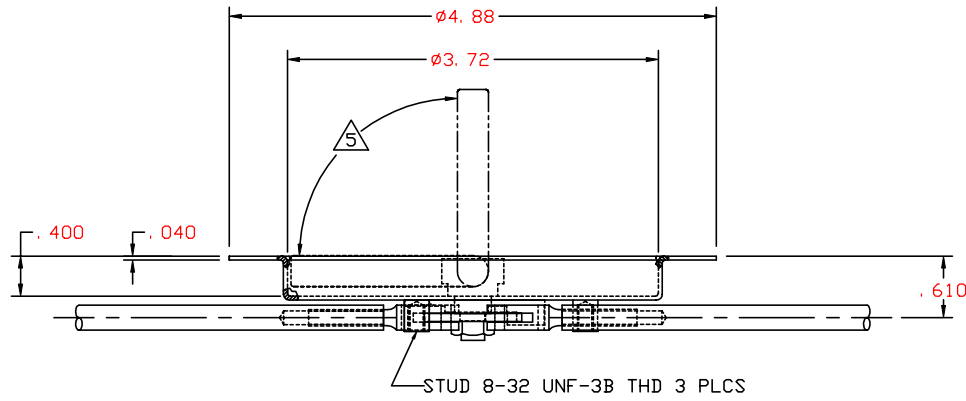
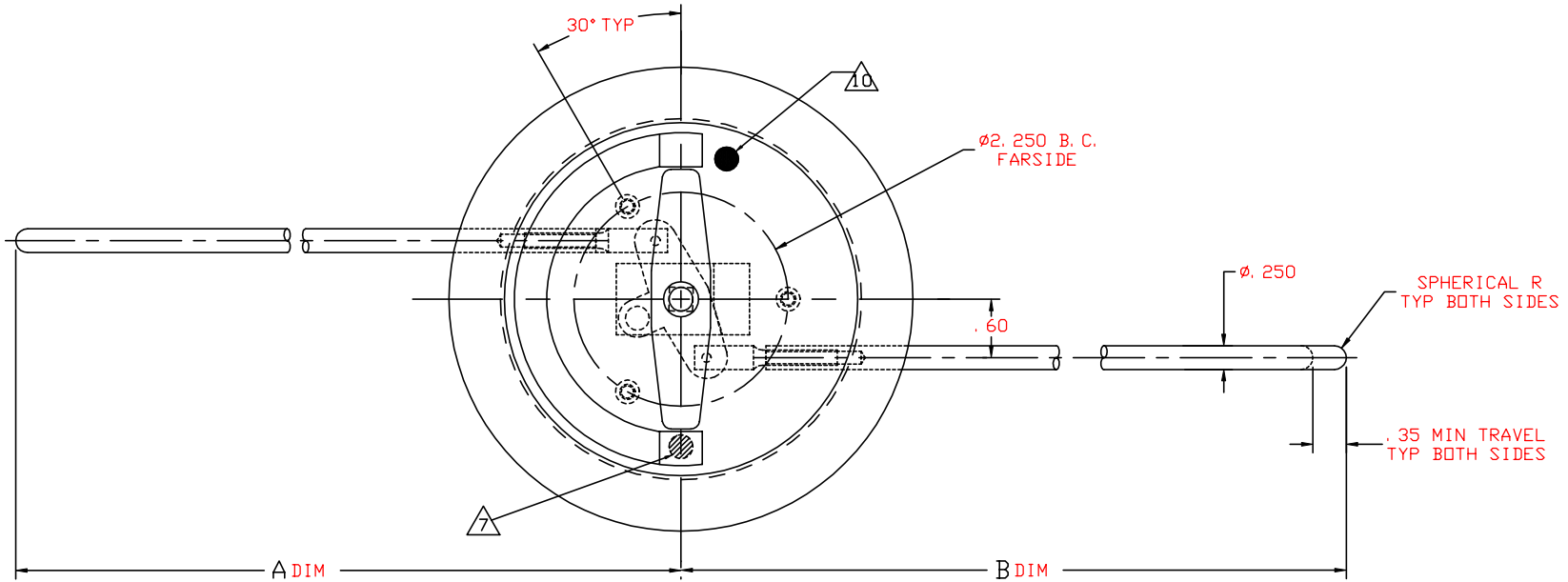
3


2

1

THE INFORMATION AND DESIGN HEREIN WAS ORIGINATED BY AND IS THE PROPERTY OF SKYLOCK INDUSTRIES INCORPORATED. SKYLOCK INDUSTRIES INCORPORATED RESERVES ALL PATENT, PROPRIETARY, DESIGN MANUFACTURING, REPRODUCTION, USE AND SALES RIGHTS THERE TO, AND TO ANY ARTICLE DISCLOSED THEREIN EXCEPT TO THE EXTENT RIGHTS ARE EXPRESSLY GRANTED TO OTHERS. THE FOREGOING DOES NOT APPLY TO VENDOR PROPRIETARY PARTS.

REVISIONS				DATE	APPROVED
ZONE	LTR	DESCRIPTION			
	V	SEE SHEET 1 FOR NOTES			




SKYLOCK INDUSTRIES INCORPORATED
 MONROVIA CALIFORNIA U. S. A.

DOOR BOLTING SYS-2 POINT

SIZE	CODE IDENT. NO.	DRAWING NO.	REV.
C	51941	20201	V
SCALE	1:1	VT.	SHEET 2 OF 2