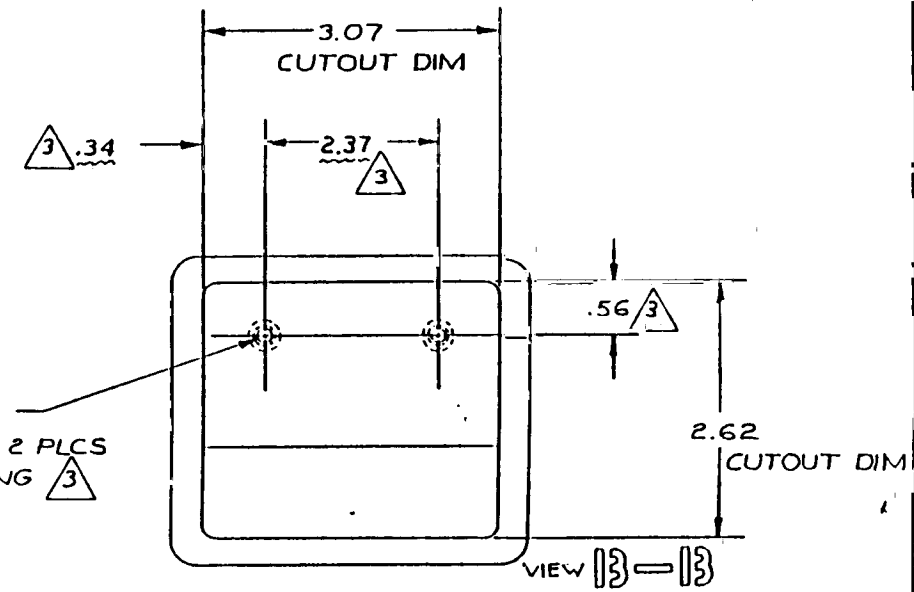
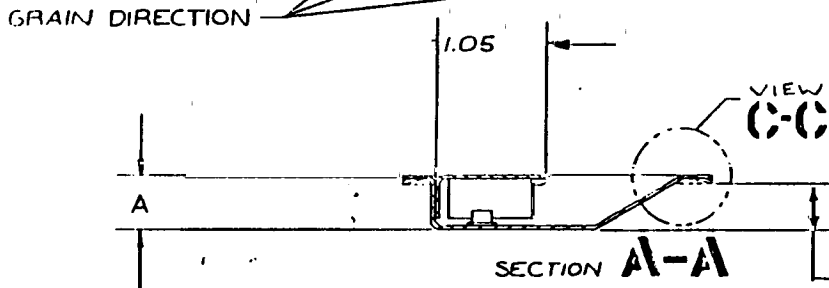
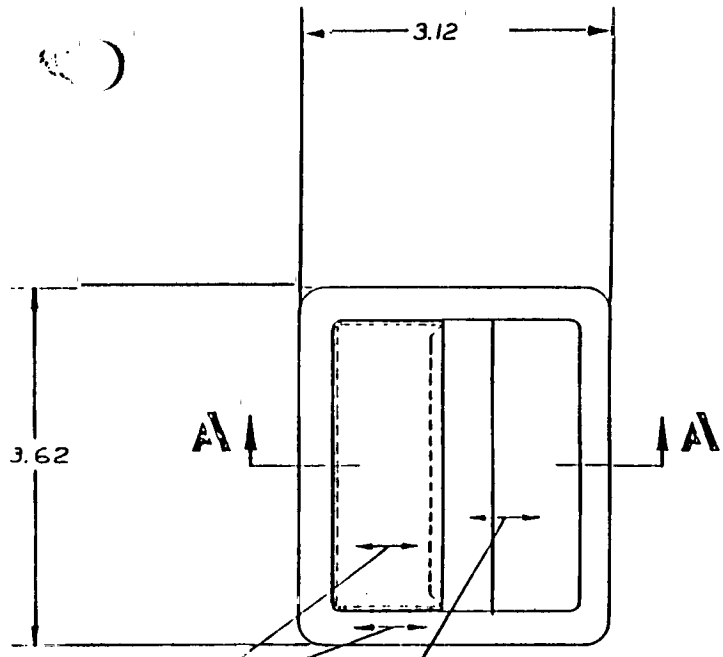


SYM	REVISIONS		DATE	BY
	EFFECTIVE ON	DESCRIPTION		
A		ADD -3	11-29-78	JEE
B		ADD -5	12-6-78	JEE
C		ZONE B-4 1.05 WAS 1.12	6-12-79	JEE
D		ADD -7	12-1-80	JEE
E		ADD VIEW C-C	3-3-89	TS
F		ADD -9	9-2-89	X



NO #32 UNC  
THD INSERT 2 PLCS  
SELF LOCKING

DIM A	REQD	PART NUMBER	DESCRIPTION	MATERIAL OR NOTE
.45		-9	HANDLE ASSY	1 2
.56		-7	HANDLE ASSY	1 2 SAME AS -1, OVERBENT FLANGE
.56		-5	HANDLE ASSY	1 2 SAME AS -1, NO INSERTS
.75		-3	HANDLE ASSY	1 2
.56		-1	HANDLE ASSY	1 2

1 THESE DIMS APPLY TO -1 & -3 ONLY

2 FINISH: PASSIVATE SATIN BRUSH

1 MAT'L: 300 SERIES CRES

NOTES: UNLESS OTHERWISE SPECIFIED

REQD		LIST OF MATERIAL	
UNLESS OTHERWISE NOTED DIMENSIONS ARE IN INCHES. TOLERANCES ON DECIMALS XX ± .03 XXX ± .010 ANGLES ± DRILLED HOLES PER ANSI Q13.1	CONTRACT NO.	SKYLOCK INDUSTRIES, INC. BALDWIN PARK, CALIFORNIA	
SURFACE ROUGHNESS	DRAFTSMAN	JEE	7/22/79
HEAT TREAT	CHECKER		
FINISH	ENGINEER	JEE	7/22/79
INSPECT	PROD. APPD		
REF. NO.	APPROVAL		
NEXT ASSY	USED ON	SIZE	CODE IDENT NO.
APPLICATION		C	51941
			20227
		SCALE 1/1	WT CALC WT ACT SHEET 1 OF 1

20227