

4

3

2


1

THE INFORMATION AND DESIGN HEREIN WAS ORIGINATED BY AND IS THE PROPERTY OF SKYLOCK INDUSTRIES INCORPORATED. SKYLOCK INDUSTRIES INCORPORATED RESERVES ALL PATENT, PROPRIETARY, DESIGN MANUFACTURING, REPRODUCTION, USE AND SALES RIGHTS THERE TO, AND TO ANY ARTICLE DISCLOSED THEREIN EXCEPT TO THE EXTENT RIGHTS ARE EXPRESSLY GRANTED TO OTHERS. THE FOREGOING DOES NOT APPLY TO VENDOR PROPRIETARY PARTS.

REVISIONS				
ZONE	LTR	DESCRIPTION	DATE	APPROVED
	A	SEE ECN A	1/8/99	T. CSIK
	B	SEE ECN B	5/3/99	T. CSIK
	C	SEE ECN C	10/26/99	T. CSIK

- 10. APPLICABLE TO FAA-PMA REPLACEMENT OR MODIFICATION PARTS ONLY. PER FAR 45.15, PARTS WILL BE IDENTIFIED WITH:
  - 1. FAA-PMA.
  - 2. SKYLOCK IND. INC.
  - 3. PART NO.
  - 4. AIRCRAFT INSTALLATION ELIGIBILITY.
- 9. USE WITH STRIKER NO. 20258 REF.
- 8. ORDER: TO ORDER LATCH WITH REVERSE BEVEL: ADD SUFFIX R TO PART NO. AS SHOWN, EXAMPLE 20242-1-R
- 7. LATCH IS REPAIRABLE PER ATA 100.
- 6. RED STRIPE SHOWS WHEN LOCKING LEVER IS IN UNLOCKED POSITION
- 5. LATCH OPERATION: ON "G" SIDE, T4619 TYPE KEY RETRACTS BOLT; ON "R" SIDE, KNOB RETRACTS BOLT. LOCKING LEVER LOCKS "G" SIDE KNOB. BOLT ALWAYS FREE TO LATCH.
- 4. REF. DECORATIVE FINISH: KNOBS, ESCUTCHEON FACE PLATE: SATIN BRUSH DIRECTION NOTED.
- 3. REF. PROTECTIVE FINISH: ALUMINUM ALLOY-CLEAR ANODIZE PER MIL-A-8625 TYPE II, CLASS I OR EQUIV. CRES.-PASSIVATE PER AMS-QQ-P-35 OR EQUIV.
- 2. REF. MAT'L: KNOB, CASE AND ESCUTCHEON: 6061-T6/T651 PER ASTM B-221 OR EQUIV. BOLT & BUSHING - NYLON 6/6, OR DELRIN, OTHER COMPONENTS - 300 SERIES CRES, PER AMS-5640N, ASTM-A-240, OR EQUIV.
- 1. REMOVE ALL BURRS AND SHARP EDGES.

NOTES: UNLESS OTHERWISE SPECIFIED:

	-3	LATCH		120242-203	
	-1	LATCH		120242-201	
PART NO.	DESCRIPTION	MATERIAL	SIZE	APPLICATION	MAKE FROM
PARTS LIST					
UNLESS OTHERWISE SPECIFIED		DRAWN BY	JEE	12/12/77	 SKYLOCK INDUSTRIES INCORPORATED MONROVIA CALIFORNIA U. S. A.
DIMENSIONS ARE IN INCHES		CHECKED	DEAN VO	1/7/99	
TOLERANCES ON		ENGINEER	T. CSIK	1/8/99	
DECIMALS ANGLES DRILLED HOLES		MFG	P.MATSUOKA	1/11/99	
.X .1		Q. C.	J.VIVIRITO	1/12/99	<div style="text-align: center; font-size: 2em; font-weight: bold;">LATCH</div>
.XX .03		DO NOT SCALE THIS DRAWING			
.XXX .010		MATERIAL - FINISH			
USED ON		SIZE	C	CODE IDENT. NO.	51941
MANUFACTURED IN ACCORDANCE WITH SKYLOCK IND. INC., QUALITY CONTROL MANUAL QC.001		DRAWING NO.	20242		REV.
		SCALE	1/2	VT.	SHEET 1 OF 2

4

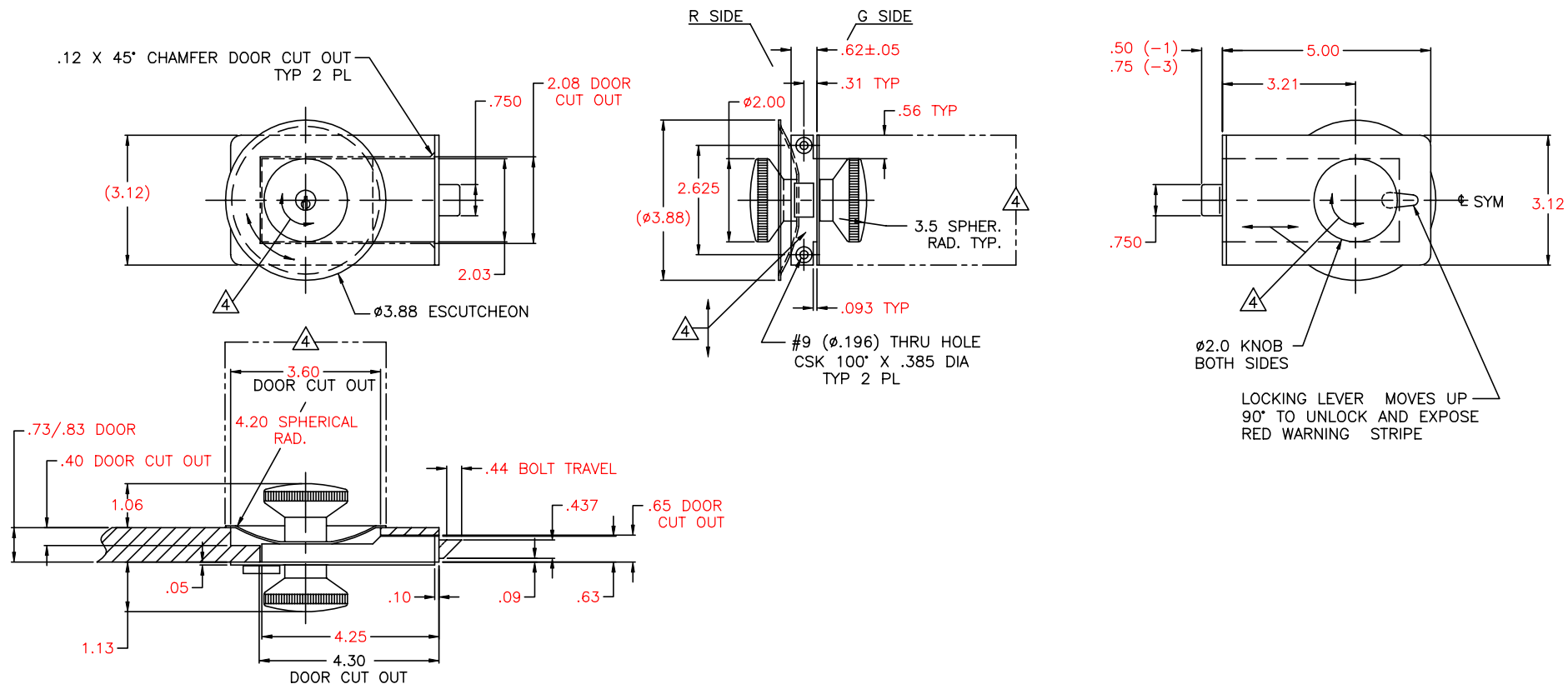
3

2

1

THE INFORMATION AND DESIGN HEREIN WAS ORIGINATED BY AND IS THE PROPERTY OF SKYLOCK INDUSTRIES INCORPORATED. SKYLOCK INDUSTRIES INCORPORATED RESERVES ALL PATENT, PROPRIETARY, DESIGN MANUFACTURING, REPRODUCTION, USE AND SALES RIGHTS THERE TO, AND TO ANY ARTICLE DISCLOSED THEREIN EXCEPT TO THE EXTENT RIGHTS ARE EXPRESSLY GRANTED TO OTHERS. THE FOREGOING DOES NOT APPLY TO VENDOR PROPRIETARY PARTS.

REVISIONS				
ZONE	LTR	DESCRIPTION	DATE	APPROVED
		SEE SHT. 1 FOR NOTES		



-1, -3 LATCH

SKYLOCK INDUSTRIES INCORPORATED  
MONROVIA CALIFORNIA U. S. A.

LATCH

SIZE	CODE IDENT. NO.	DRAWING NO.	REV.
C	51941	20242	C
SCALE	1/2	VT.	SHEET 2 OF 2