


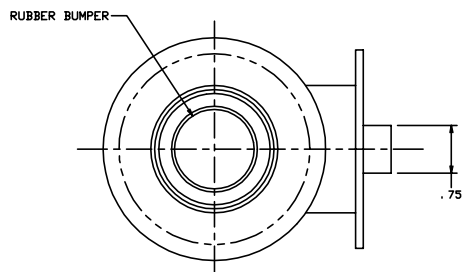
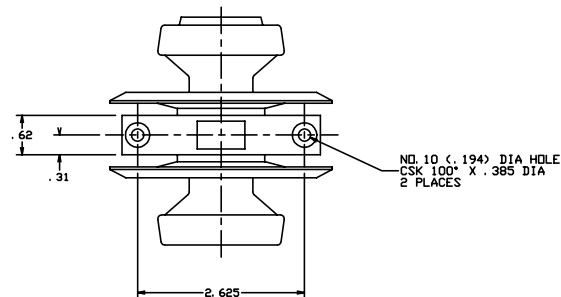
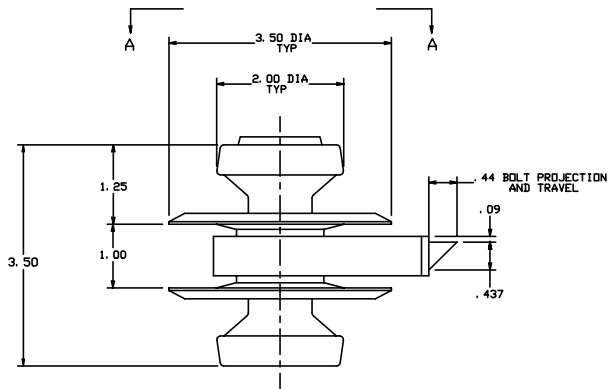


THE INFORMATION AND DESIGN HEREIN WAS ORIGINATED BY AND IS THE PROPERTY OF SOLIDEX INDUSTRIES INCORPORATED. SOLIDEX INDUSTRIES INCORPORATED RESERVES ALL PATENT, PROPRIETARY, DESIGN MANUFACTURING INFORMATION, USE AND SALES RIGHTS HEREIN, AND TO ANY ARTICLES DEVELOPED THEREIN EXCEPT TO THE EXTENT RIGHTS ARE EXPRESSLY GRANTED TO OTHERS. THE FOREGOING DOES NOT APPLY TO NON-PATENTABLE MATTER.

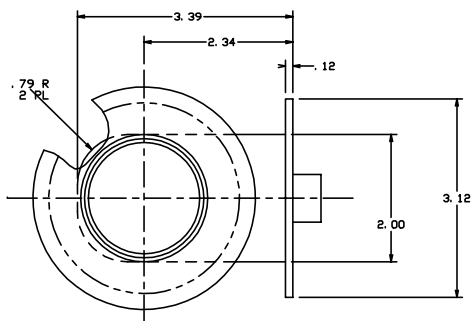
REVISIONS				
ZONE	LTR	DESCRIPTION	DATE	APPROVED
	NC	PRODUCTION RELEASE	12-13-77	JEE
	A	REDRAWN	4-30-98	T. C.

- NOTES: UNLESS OTHERWISE SPECIFIED.
- MAT'L: KNOB, ESCUTCHEON AND CASE; ALUM ALLOY, BUSHING & BOLT; DELRIN SPRINGS AND ALL OTHER COMPS; STEEL.
 - PROTECTIVE FINISH: ALUM.; ANODIZE, CRES; PASSIVATED, STEEL; CAD PLATED.
 - DECORATIVE FINISH: SATIN BRUSH, AND CLEAR ANODIZE.
 - OPERATION: KNOBS RETRACT BOLT AT ANY TIME.
 - LATCH IS REPAIRABLE PER ATA 100.
 - ORDER: TO ORDER LATCH WITH REVERSE BEVEL, ADD SUFFIX 'R' TO PART NO. AS SHOWN, EXAMPLE; 20243-1-R.
 - USE WITH STRIKER NO. 20258.





-  PART -1 HAS RUBBER BUMPER ON 'G' SIDE.
-  PART -3 HAS RUBBER BUMPER ON BOTH SIDES.
-  PART -5 HAS DECORATIVE ACRYLIC PLASTIC INSTEAD OF BUMPER.



VIEW A-A
G SIDE



R SIDE

	-5	LATCH ASSY				
	-3	LATCH ASSY				
	-1	LATCH ASSY				
QTY REQD	PART NO.	DESCRIPTION	MATERIAL	SIZE	SPECIFICATION	ITEM NO.
PARTS LIST						
UNLESS OTHERWISE SPECIFIED		DRAWN BY	JEE	12-13-77		
DIMENSIONS ARE IN INCHES		CHECKED		 SOLIDEX INDUSTRIES INCORPORATED RANCHOVIA CALIFORNIA		
TOLERANCES ON		DESIGNED		LATCH ASSEMBLY		
DECIMALS	ANGLES	DRIILLED HOLES	ENGINEER			
.0005		± 0° 30'	AND 10007	PROJECT		
.0005		± 0° 30'	AND 10007	APPROVAL		
DO NOT SCALE THIS DRAWING		APPROVAL				
MATERIAL - FINISH		USED ON		SIZE	CODE IDENT. NO.	DRAWING NO.
NEXT ASSY				D	51941	20243
FINAL ASSY				SCALE	1:1	VS.
				SHEET		1 OF 1