

THE INFORMATION AND DESIGN HEREIN WAS ORIGINATED BY AND IS THE PROPERTY OF SKYLARK INDUSTRIES INCORPORATED. SKYLARK INDUSTRIES INCORPORATED RECEIVES ALL PATENT, PROPRIETARY, DESIGN MANUFACTURING INFORMATION, USE AND SALES RIGHTS HEREIN, AND TO ANY ARTICLES DEVELOPED THEREIN EXCEPT TO THE EXTENT RIGHTS ARE EXPRESSLY GRANTED TO OTHERS. THE FOREGOING DOES NOT APPLY TO NON-PATENTABLE PARTS.

NOTES: UNLESS OTHERWISE SPECIFIED.

1. REFERENCE MAT'L: KNOB, HANDLE, ESCUTCHEONS AND CASE; ALUM. ALLOY PER ASTM B-221 DR EQUIV., BUSHINGS AND BOLT; NYLON 6/6 DR EQUIV., SPRINGS AND ALL OTHER COMPS; CRES PER AMS-5640N DR EQUIV.
2. REFERENCE FINISH: ALUM. PARTS; CLEAR ANODIZE PER MIL-A-8625, TYPE II, CLASS 1 DR EQUIV. CRES PARTS; PASSIVATE PER QQ-P-35 DR EQUIV.

3. DECORATIVE FINISH: SATIN BRUSH.

4. OPERATION: TURN 'G' SIDE HANDLE OR 'R' SIDE KNOB TO RETRACT BOLT.

5. LATCH IS REPAIRABLE PER ATA 100.

6. TO ORDER LATCH WITH REVERSE BEVEL, ADD SUFFIX 'R' TO PART NO. AS SHOWN, EXAMPLE; 20251-R.

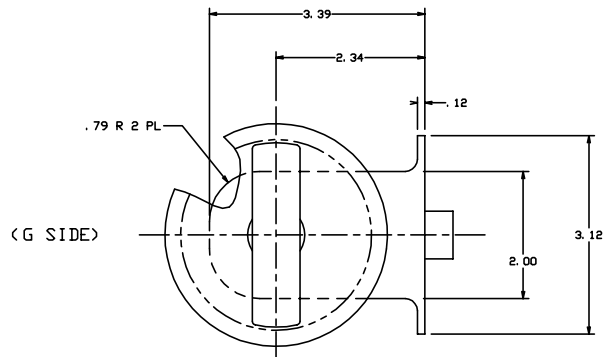
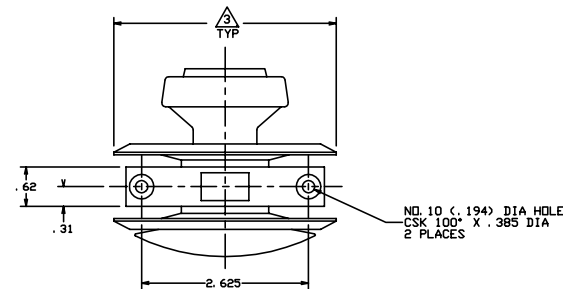
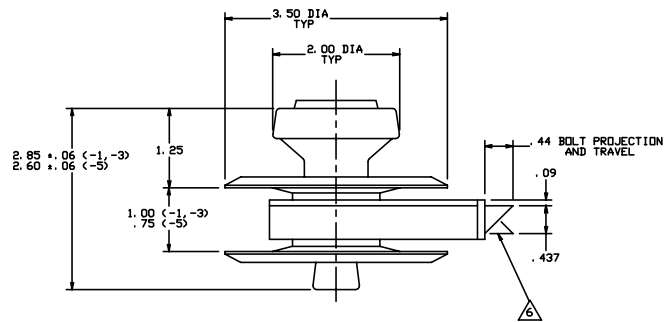
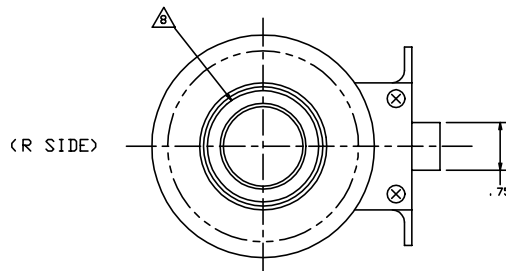
7. MAY BE USED WITH STRIKER NO. 20258.

8. PART HAS RUBBER BUMPER ON 'R' SIDE.

9. PER FAR45.15, PARTS WILL BE IDENTIFIED WITH:

1. FAA-PMA
2. SKYLARK IND. INC.
3. PART NO.
4. AIRCRAFT ELIGIBILITY.

| REVISIONS | | | | |
|-----------|-----|---|---------|----------|
| ZONE | LTN | DESCRIPTION | DATE | APPROVED |
| | NC | PRODUCTION RELEASE | 9-3-80 | JEE |
| | A | DELETED NOTE 9. | 5-91 | S. C. |
| | B | REDRAWN, REVISED NOTE 9. IS 'R' SIDE WAS 'G' SIDE | 6-21-91 | T. C. |
| | C | ADDED -5 | 7-15-94 | T. C. |
| | D | SEE ECN D | 4-2-99 | T. C. |



-1, -3, -5 LATCH (SHOWN)

| QTY REQD | PART NO. | DESCRIPTION | MATERIAL | SIZE | SPECIFICATION | NAME | FINISH |
|----------|----------|-------------|----------|------|---------------|------|--------|
| | -5 | LATCH | | | | | |
| | -3 | LATCH | | | | | |
| | -1 | LATCH | | | | | |

| UNLESS OTHERWISE SPECIFIED | | DRAWN BY | T. CSIK | 9-80-91 | SKYLARK INDUSTRIES INCORPORATED REDWOOD CALIFORNIA |
|---|---------|--------------|---------|---------------|---|
| DIMENSIONS ARE IN INCHES | | CHECKED | | | |
| TOLERANCES ON | | DESIGNED | | | |
| DECIMALS | ANGLES | DILLED HOLES | | | |
| .015 | ± .01 | ± .015 | | | |
| .0005 | ± .005 | ± .005 | | | |
| DO NOT SCALE THIS DRAWING | | DATE | | | |
| MATERIAL - FINISH | USED ON | SIZE | D | CODE ECN. NO. | 51941 |
| NEXT ASBY | | DRAWING NO. | 20251 | REV. | D |
| MANUFACTURE IN ACCORDANCE WITH SKYLARK QUALITY CONTROL MANUAL DC. 001 | | SCALE | 1:1 | PL. | |
| | | SHEET | 1 | OF | 1 |