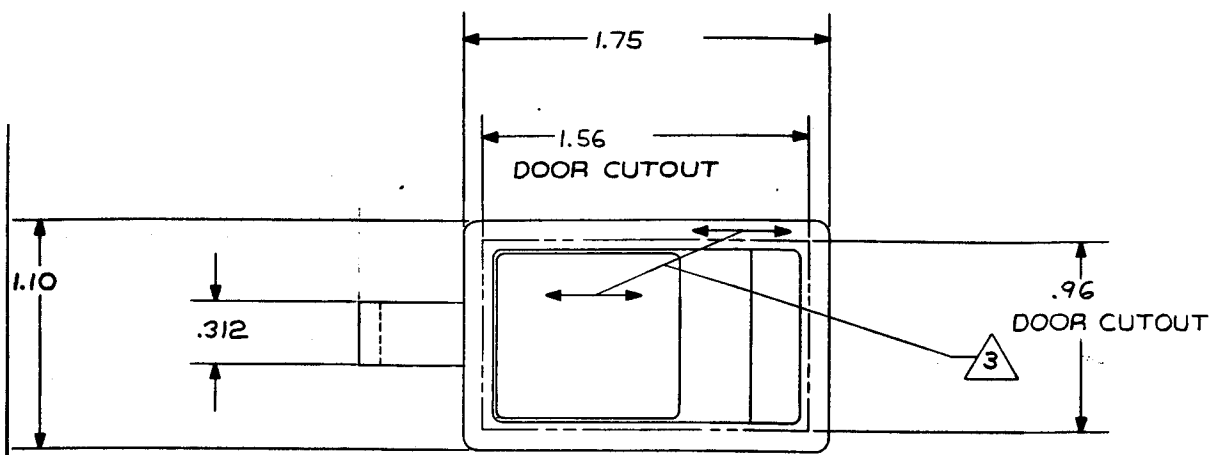
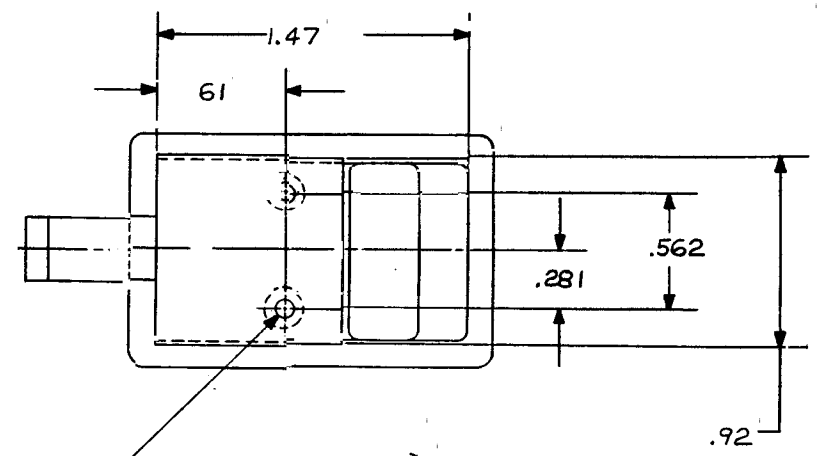
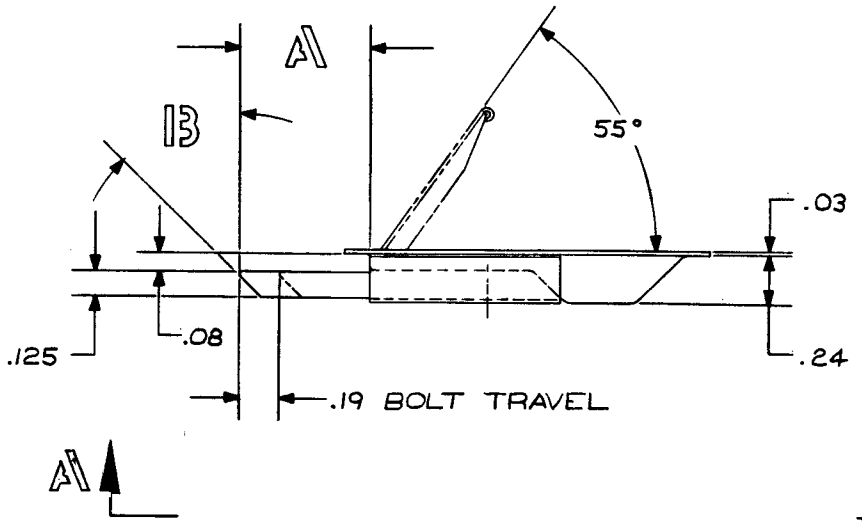


REVISIONS			
SYM	DESCRIPTION	DATE	BY
	EFFECTIVE ON	DISP EXIST PARTS	APPROVAL
A	ADD -3	6-23-78	JEE



SECOND DASH NO	BOLT PROJ.	BEVEL
- 1	.37	45°
- 3	.50	45°
- 5	.62	45°
- 7	.75	NONE



NO 6-32 MTG HOLES 2 PLCS } (-1)
 NO 6-32 UNC INSERT 2 PLCS } (-3) A-A VIEW

ORDERING : EXAMPLE - 20254-1 - 3
 BASIC P/N .50 BOLT PROJ 45° BEVEL

FINISH : SATIN BRUSH & PASSIVATE
 BREAK ALL SHARP EDGES
 MAT'L : ALL PARTS 300 SERIES CRES

NOTES : UNLESS OTHERWISE SPECIFIED

REQD	DESCRIPTION	MATERIAL OR NOTE
-3	LATCH ASSY	NO 6-32 THD INSERTS
-1	LATCH ASSY	NO 6 MOUNTING HOLES

LIST OF MATERIAL		
UNLESS OTHERWISE NOTED DIMENSIONS ARE IN INCHES. TOLERANCES ON: DECIMALS .XX ± .03 .XXX ± .010 ANGLES ± DRILLED HOLES PER AND10387	CONTRACT NO.	SKYLOCK INDUSTRIES, INC. SO. EL MONTE, CALIFORNIA LATCH ASSEMBLY
SURFACE ROUGHNESS	DRAFTSMAN JEE 1/22/78	
HEAT TREAT	CHECKER	
FINISH	ENGINEER [Signature] 1/22/78	
	PROD. APPD [Signature] 1/22/78	
	APPROVAL [Signature] 1/22/78	SIZE CODE IDENT NO.
NEXT ASSY	USED ON	C 51941 20254