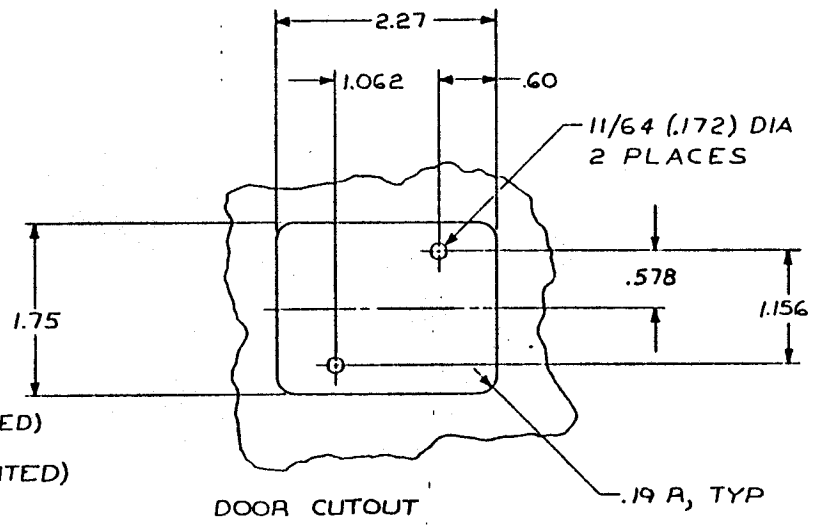
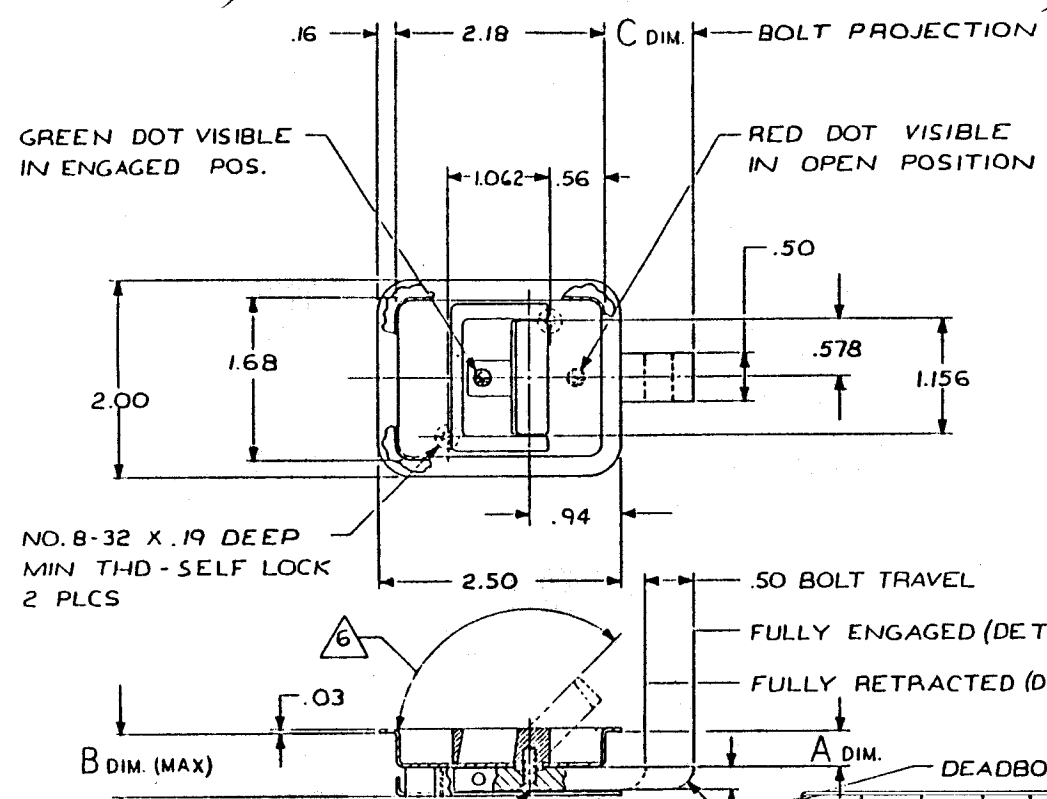


REVISIONS				
SYM	DESCRIPTION		E	BY
	EFFECTIVE ON	DISP EXIST PARTS		
A	ADD -5 TO -7		7-10-79	JEE
B	ADD -9 TO -15		1-21-81	JEE
C	ADDED -17		5-25-82	JFF
D	ADDED -19		10-26-82	JFF



NO. 8-32 SCREW (SELF LOCKING)
 SLAM BOLT CONFIGURATION (-9 TO -15)

7. -3 IS THE SAME AS -1 EXCEPT AS SHOWN
 G HANDLE IS SPRING LOADED DOWN

5. BOLT IS DETENTED IN EXTENDED AND RETRACTED POSITIONS
 4. STATIC LOAD : 600 LB
 3. DECORATIVE FINISH - SATIN BUFF
 2. FINISH: ALUM - ANODIZE
 CRES - PASSIVATE
 MAT'L : HANDLE - ALUM ALLOY
 ALL OTHER PARTS - 300 SERIES CRES

NOTES : UNLESS OTHERWISE SPECIFIED

DIM C	DIM A	DIM B	PART NUMBER	DESCRIPTION	MATERIAL OR NOTE
1.00	.49	.64	-19	LATCH ASSY	FLUSH PULL HANDLE (DEADBOLT)
1.12	.19	.49	-17	LATCH ASSY	PROTRUDING PULL HANDLE (DEADBOLT)
.81	.34	.64	-15	LATCH ASSY	FLUSH PULL HANDLE (SLAM)
.81	.19	.49	-13	LATCH ASSY	PROTRUDING PULL HANDLE (SLAM)
.91	.34	.64	-11	LATCH ASSY	FLUSH PULL HANDLE (SLAM)
.91	.19	.49	-9	LATCH ASSY	PROTRUDING PULL HANDLE (SLAM)
.81	.34	.64	-7	LATCH ASSY	FLUSH PULL HANDLE (DEADBOLT)
.81	.19	.49	-6	LATCH ASSY	PROTRUDING PULL HANDLE (DEADBOLT)
.91	.34	.64	-3	LATCH ASSY	FLUSH PULL HANDLE (DEADBOLT)
.91	.19	.49	-1	LATCH ASSY	PROTRUDING PULL HANDLE (DEADBOLT)

APPLICATION		REQD		LIST OF MATERIAL	
NEXT ASSY	USED ON	UNLESS OTHERWISE NOTED DIMENSIONS ARE IN INCHES. TOLERANCES ON DECIMALS XX ± .03 XXX ± .010 ANGLES DRILLED HOLES PER ANSI 10307 SURFACE ROUGHNESS	CONTRACT NO.	SKYLOCK INDUSTRIES, INC. SO. EL MONTE, CALIFORNIA	
		HEAT TREAT	DRAFTSMAN JEE	LATCH ASSEMBLY PULL HANDLE	
		FINISH	CHECKER JFF	SIZE C CODE IDENT NO. 51941 20316	
		INSPECT	ENGINEER JEE	SCALE 1/1 WT CALC WT ACT SHEET 1 OF 1	
		REF. NO.	PROD. APPD		
			APPROVAL JFF		