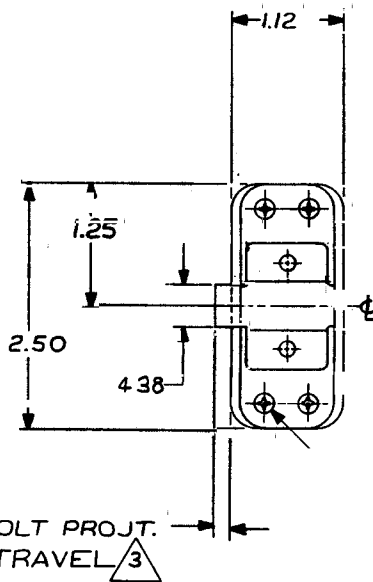
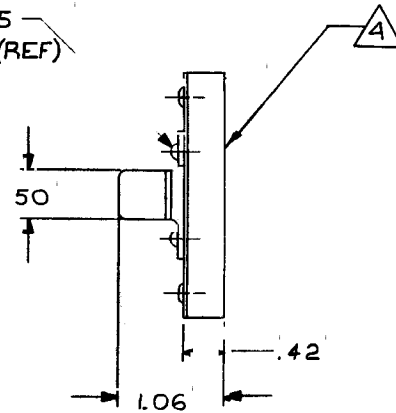


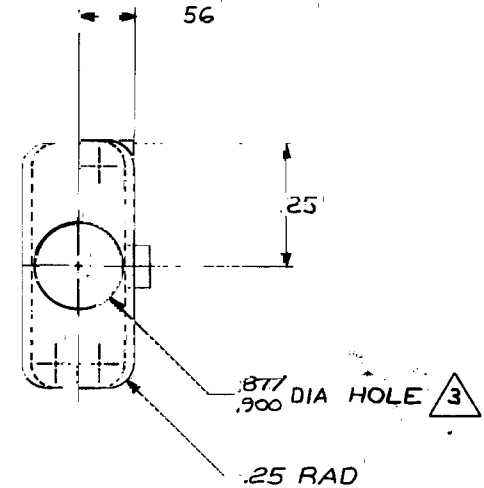
REVISIONS				
SYM	DESCRIPTION		DATE	BY
	EFFECTIVE ON	DISP EXIST PARTS		
NC	PRODUCTION RELEASE		2/21/80	
A	ADD NOTE A ; MAT'L CHANGE		12/29/80	KL
B	DIM. IS .887/.900 DIA, WAS .126/.134 DIA. REVISED PER CUST. REQUEST		3-1-94	T.C.



NAS 1097AD5 RIVET 2 PL (REF)



-AN 530-4RG SCREW 4 PL (REF)
AN 960 D4 WASHER 4 PL (REF)



- 4.** MAT'L: SUPPORT BLOCK; NYLON, MIL-P-17091, TYPE
- 3.** OPERATION: BOLT IS RETRACTED BY PUSHING A PIN THRU .877/.900 DIA HOLE.
- 2.** FINISH: ALUM-CLEAR ANODIZE
STEEL: CAD PLATE
- 1.** MAT'L: PLATE AND HOUSING-ALUM
BOLT: STEEL
SPRING: CRES

NOTES: UNLESS OTHERWISE SPECIFIED

		-1	LATCH ASSY		
		PART NUMBER	DESCRIPTION	MATERIAL OR NOTE	
REQD		LIST OF MATERIAL			
		UNLESS OTHERWISE NOTED DIMENSIONS ARE IN INCHES. TOLERANCES ON: DECIMALS XX ± .03 XXX ± .010 ANGLES ± DRILLED HOLES PER AND10387		CONTRACT NO.	
		SURFACE ROUGHNESS ✓		DRAFTSMAN JEE 2/29/80	
		HEAT TREAT		CHECKER	
		FINISH		ENGINEER JEE 1/14/80	
		INSPECT		PROD. APPD	
		REF. NO.		APPROVAL <i>[Signature]</i>	
NEXT ASSY		USED ON		SIZE CODE IDENT NO.	
APPLICATION				C 51941 20334 B	
				SCALE 1/1 WT CALC WT ACT SHEET 1 OF 1	

