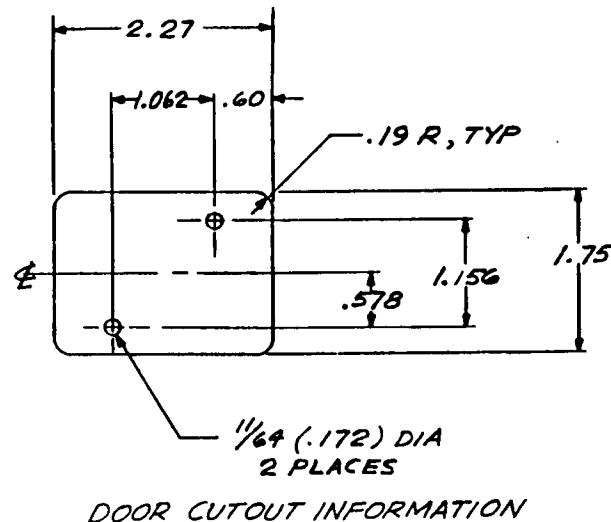
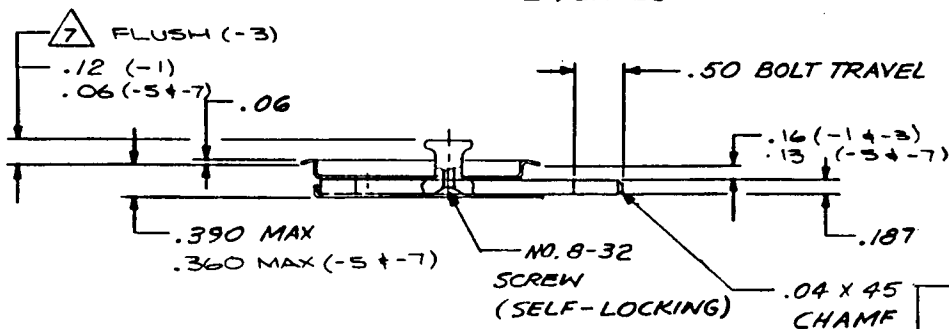
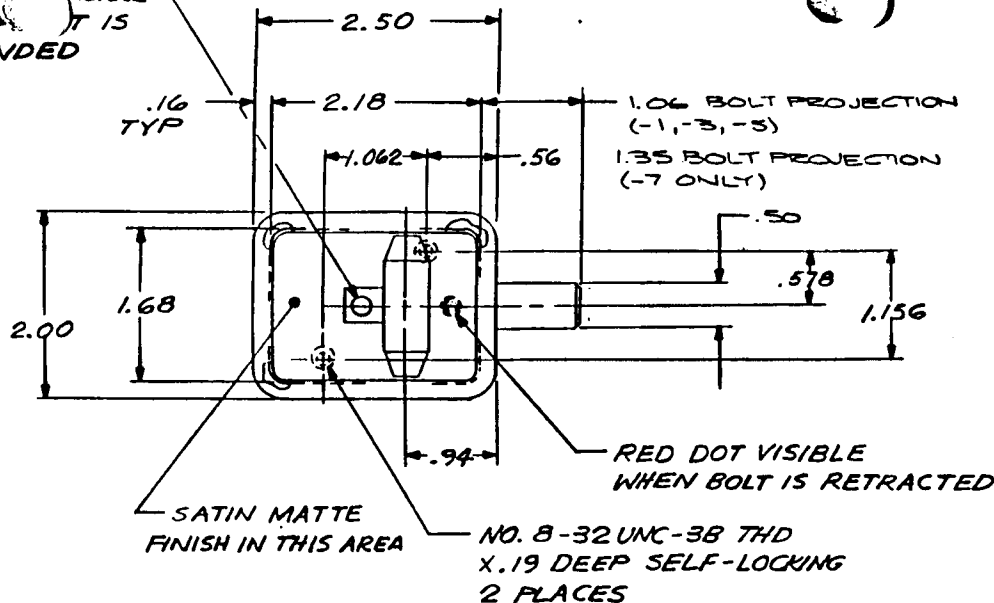


GREEN VISIBLE WHEN IT IS EXTENDED



SYM	DESCRIPTION		DATE	BY
	EFFECTIVE ON	DISP EXIST PARTS		
A	SEE DCN 10658		1-19-83	MM
B	ADDED -5		6-9-92	KL
C	ADDED -7		8-27-92	KL
D	REVISED / CLARIFIED - 5 + -7		11-3-93	KL
E	.16 (-1 + -3), .13 (-3 + -7) WERE .19, .16		12-1-93	KL

- 7 HANDLE FLUSH WITH CASE FOR -3 ONLY
  - 6. BOLT IS DETENTED IN EXTENDED AND RETRACTED POSITIONS
  - 5. STATIC LOAD: 600 LB
  - 4. DECORATIVE FINISH: SATIN BUFF & SATIN MATTE.
  - 3. FINISH: HANDLE; NONE CRES PARTS; PASSIVATED
  - 2. MATL: HANDLE; ALUM ALLOY 6061-T6 ALL OTHER PARTS; 300 SERIES CRES
  - 1. REMOVE BURRS AND BREAK SHARP CORNERS
- NOTES: UNLESS OTHERWISE SPECIFIED

	-7	LATCH	S/A -1 EXCEPT AS NOTED
	-5	LATCH	S/A -1 EXCEPT AS NOTED
	-3	LATCH	7 S/A -1 EXCEPT AS NOTED
	-1	LATCH	
PART NUMBER	DESCRIPTION	MATERIAL OR NOTE	

REQD		LIST OF MATERIAL	
UNLESS OTHERWISE NOTED DIMENSIONS ARE IN INCHES. TOLERANCES ON DECIMALS XX ± .03 XXX ± .010 ANGLES ± 0.50° DRILLED HOLES PER ANSI B31.1			
SURFACE ROUGHNESS		CONTRACT NO.	
HEAT TREAT		DRAFTSMAN KS	1/2/80
FINISH		CHECKER DLS	11/24/80
INSPECT		ENGINEER M. J. K.	11/24/80
REF. NO.		PROD. APPD	
NEXT ASSY		APPROVAL	10/13/80
USED ON		SKYLOCK INDUSTRIES, INC. SO. EL MONTE, CALIFORNIA	
APPLICATION		LATCH ASSEMBLY- DETENTED	
		SIZE C	CODE IDENT NO. 51941
		20345	
		SCALE 1/1	WT CALC WT ACT SHEET 1 OF 1