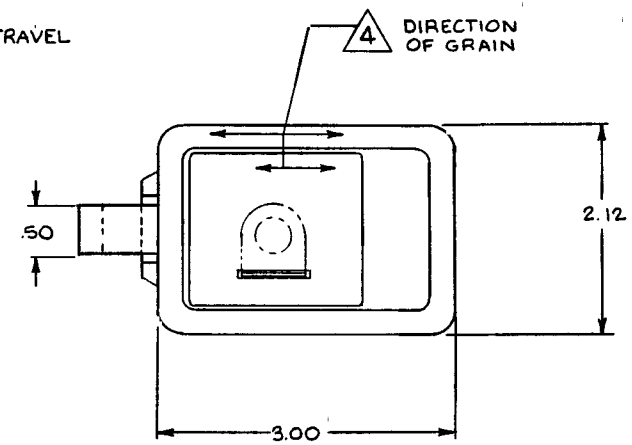
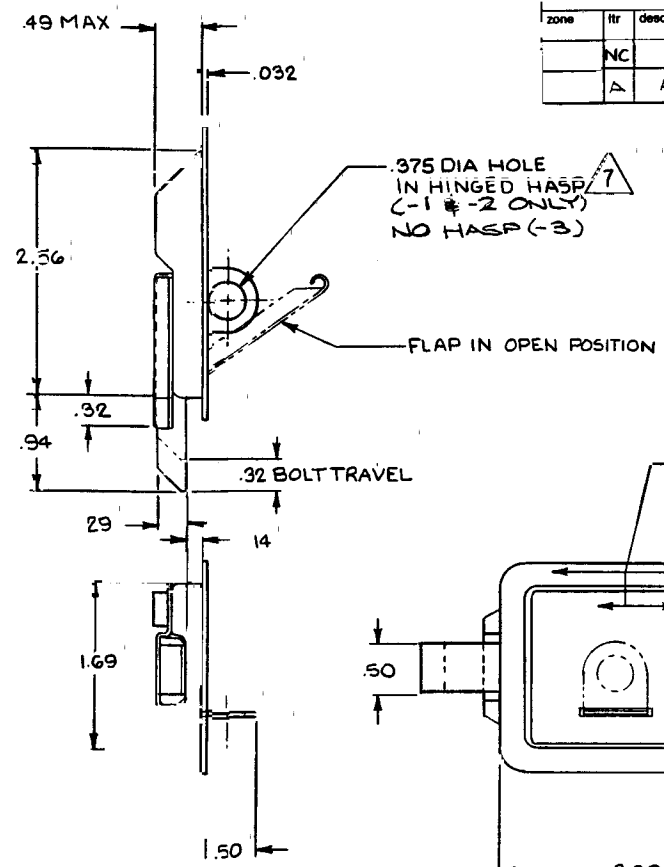
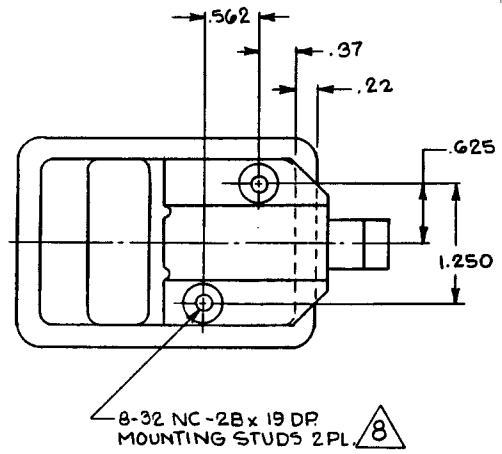



The information and design herein was originated by and is the property of Skylock Industries Incorporated. Skylock Industries Incorporated reserves all patent, proprietary, design, manufacturing, reproduction, use and sales rights thereto, and to any article disclosed therein except to the extent rights are expressly granted to others. The foregoing does not apply to vendor proprietary parts.

revisions				
zone	itr	description	date	approved
	NC	PRODUCTION RELEASE	11-27-87	TJ
	A	ADDED -3	7-29-92	SL



- 8 HOLE PATTERN IS SAME FOR ODD & EVEN DASH NUMBERS
 - 7 HASP MAY BE STOWED UNDER FLAP WHEN NOT IN USE
 - 6 TO RETRACT BOLT, LIFT FLAP APPROXIMATELY 54° BOLT IS SPRING LOADED TO RETURN TO EXTEND POSITION
 - 5 STATIC LOAD : 800 LBS
 - 4 DECORATIVE FINISH: SATIN BRUSH
 - 3 PROTECTIVE FINISH: PASSIVATE
 - 2 MATL: CORROSION RESISTANT STEEL
 - 1. REMOVE ALL BURRS AND SHARP CORNERS.
- NOTES: UNLESS OTHERWISE SPECIFIED.

qty reqd	part no	description	material	size	specification	item no
	-3	LATCH ASSY	S/A -1 EXCEPT AS NOTED			
	-2	LATCH ASSY	OPP.			
	-1	LATCH ASSY	SHOWN			

parts list		drawn by <i>ingdavis T</i> 7/27/87	 Skylock Industries Incorporated Monrovia California
unless otherwise specified		checked	
dimensions are in inches		engineer	<h1>LATCH ASSY</h1>
tolerances on decimals angles drilled holes .x ± .1 ± 0° 30' AND 10387 .xx ± .03 .xxx ± .010		project	
do not scale this drawing		approval <i>Russell</i> 7/27/87	
material - finish		scale 1/1	size C code ident no 51941 drawing no 20611 sheet 1 of 1 rev A

used on	next assy	final assy
application	qty reqd	
interpret drawing in accordance with MIL-D-1000		
remove all burrs break sharp edges .010 max		
all corner and fillet radii to be .020 max		