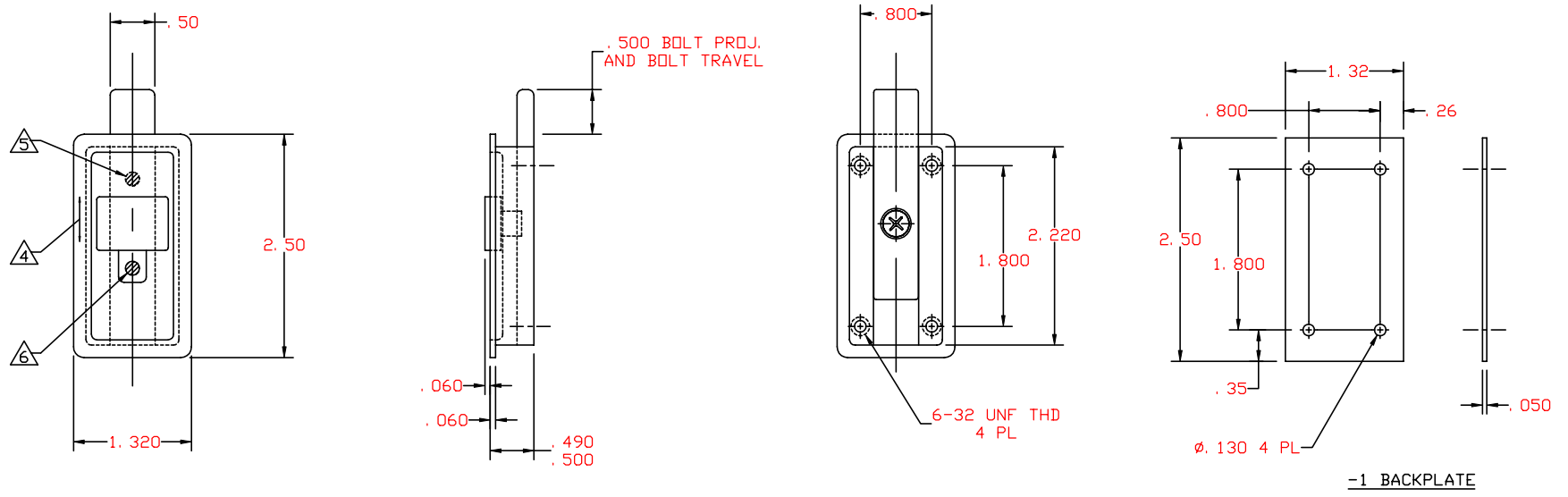


THE INFORMATION AND DESIGN HEREIN WAS ORIGINATED BY AND IS THE PROPERTY OF SKYLOCK INDUSTRIES INCORPORATED. SKYLOCK INDUSTRIES INCORPORATED RESERVES ALL PATENT, PROPRIETARY, DESIGN MANUFACTURING, REPRODUCTION, USE AND SALES RIGHTS THERE TO, AND TO ANY ARTICLE DISCLOSED THEREIN EXCEPT TO THE EXTENT RIGHTS ARE EXPRESSLY GRANTED TO OTHERS. THE FOREGOING DOES NOT APPLY TO VENDOR PROPRIETARY PARTS.

REVISIONS				
ZONE	LTR	DESCRIPTION	DATE	APPROVED
	E	SEE ECN E		



8. PER FAR 45.15. PARTS WILL IDENTIFIED WITH:
1. FAA-PMA.
  2. SKYLOCK IND. INC.
  3. PART NO.
  4. AIRCRAFT ELIGIBILITY.

7. LATCH IS DETENTED IN RETRACTED AND EXTENDED POSITION.

- ⑥ GREEN DOT VISIBLE WHEN BOLT IS EXTENDED.
- ⑤ RED DOT VISIBLE WHEN BOLT IS RETRACTED.
- ④ DECORATIVE FINISH: SATIN BRUSH.

3. FINISH REF.: CRES PARTS; PASSIVATE PER AMS-QQ-P-35, TYPE II, OR EQUIV. CASE; SATIN BRUSH LENGTHWISE TO PART SURFACE AND HARD ANODIZE PER MIL-A-8625, TYPE III, CLASS 1, .0015-.0010 THICK, OR EQUIV.
2. MAT'L REF: CASE & HANDLE; 6061-T6/T651 ALUM. PER ASTM B-221, OR EQUIV. BOLT; 303 CRES, PER AMS-5649N, OR EQUIV. PLATE; 302/304 CRES, COND. A, PER ASTM-A240, QQ-S-766, OR EQUIV. SPRING; 17-7 PH CRES, COND. A, PER AMS-5528, OR EQUIV ASTM, - HEAT TREAT PER MIL-H-6875, OR EQUIV.

1. REMOVE ALL BURRS AND SHARP CORNERS.

NOTES: UNLESS OTHERWISE SPECIFIED

1	-1	BACKPLATE			
1	-201	DEAD BOLT ASSY			
-401	PART NO.	DESCRIPTION	MATERIAL	SIZE	APPLICATION
PARTS LIST					
UNLESS OTHERWISE SPECIFIED		DRAWN BY SINGELAKIS, T		SKYLOCK INDUSTRIES INCORPORATED MONROVIA CALIFORNIA U. S. A.	
DIMENSIONS ARE IN INCHES		CHECKED			
TOLERANCES ON		ENGINEER			
DECIMALS ANGLES DRILLED HOLES		MFG			
.X ± .1 ± 0° 30' AND 10387		QC		DEAD BOLT ASSY	
.XXX ± .010					
DO NOT SCALE THIS DRAWING					
MATERIAL - FINISH		USED ON	SIZE	CODE IDENT. NO.	DRAWING NO.
NEXT ASSY			C	51941	20641
MANUFACTURE IN ACCORDANCE WITH SKYLOCK IND. INC., QUALITY CONTROL MANUAL QC.001			SCALE	1: 1	VT.
			SHEET 1 OF 1		REV. E