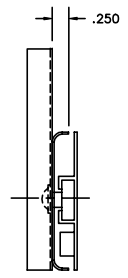
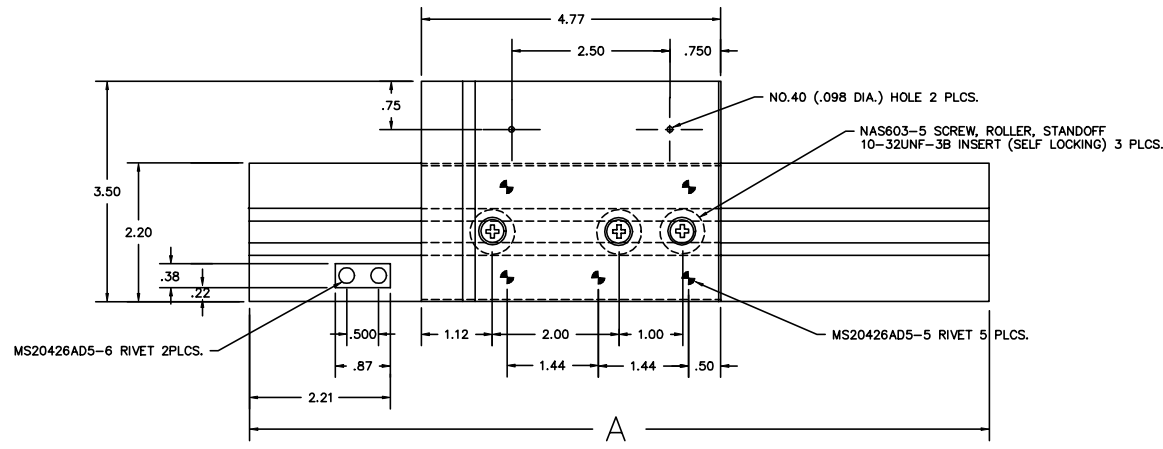
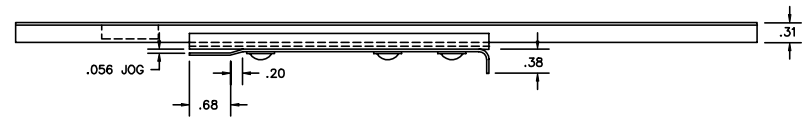


ALL INFORMATION AND DESIGN HEREIN ARE OWNED BY AND IS THE PROPERTY OF SKYLOCK INDUSTRIES INCORPORATED. NO REUSE, REPRODUCTION, DISSEMINATION, OR ANY OTHER ACTION IS PERMITTED WITHOUT THE WRITTEN PERMISSION OF SKYLOCK INDUSTRIES INCORPORATED. THE DESIGN HEREIN IS NOT TO BE USED FOR ANY OTHER PROJECT WITHOUT THE WRITTEN PERMISSION OF SKYLOCK INDUSTRIES INCORPORATED. THE INFORMATION CONTAINED HEREIN IS NOT TO BE USED FOR ANY OTHER PROJECT WITHOUT THE WRITTEN PERMISSION OF SKYLOCK INDUSTRIES INCORPORATED.

PATENT PENDING

- NOTES:
1. REMOVE ALL BURRS AND BREAK SHARP EDGES.
 2. MATL: RAILS, STOPS; 6061-T6 ALUM.
TIE PLATE, CHANNEL; 2024-T3 ALUM.
STANDOFF; SERIES 300 CRES
ROLLER; NYLON
 3. FINISH: ALL ALUM.; CLEAR ANODIZE
CRES; PASSIVATE

REVISIONS:				
ZONE	LR	DESCRIPTION	DATE	APPROVED
C		REDRAWN AND REVISED	1-3-91	JL



-401, -403, -405 SHOWN
-402, -404, -406 OPP. (SEE SHT. 2)

36.00		-406	SLIDE RAIL ASSY	RT. H.
36.00		-405	SLIDE RAIL ASSY	LT. H.
24.00		-404	SLIDE RAIL ASSY	RT. H.
24.00		-403	SLIDE RAIL ASSY	LT. H.
12.00		-402	SLIDE RAIL ASSY	RT. H.
12.00		-401	SLIDE RAIL ASSY	LT. H.

QTY REQD	PART / EDIT NO.	DESCRIPTION	MATERIAL / SPECIFICATION	REV
A				

UNLESS OTHERWISE SPECIFIED: DIMENSIONS ARE IN INCHES		CONTRACT NO.	
TOLERANCES	ANGULAR	DRAWN BY	1-3-91
.0015 & .003	1/2 OF .01	JL	
DO NOT SCALE DRAWING		CHECK	
NEXT ASST	PRVL ASST	DESIGN	9-29-88
USED ON	DESIGN ACTIVITY	CUSTOMER	
FRS	NOTED	ACT BY	DATE

SKYLOCK INDUSTRIES INCORPORATED
MONROVIA, CALIFORNIA, USA

SLIDE RAIL ASSY
PATENT PENDING

REV: D 51941 DRAWING NO. 20657 REV. C

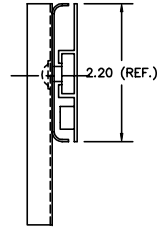
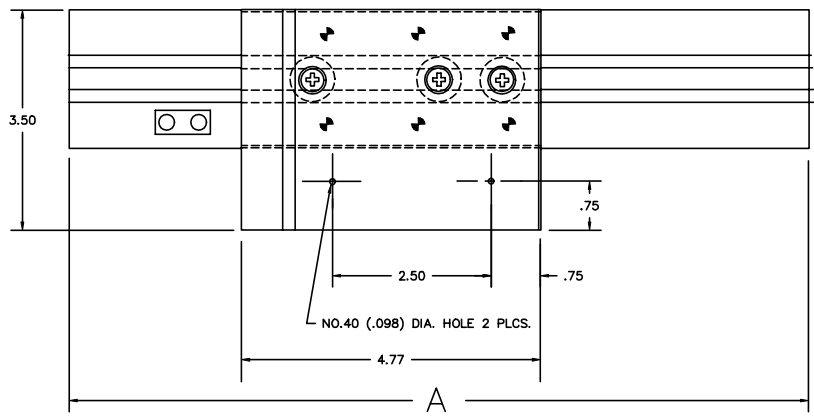
SCALE 1:1 RELEASE DATE SHEET 1 OF 2

ALL INFORMATION AND DESIGN HEREIN ARE OWNED BY AND IS THE PROPERTY OF SKYLOCK INDUSTRIES INCORPORATED. WITHOUT WRITING PERMISSION, NO PARTS, INFORMATION, DRAWINGS, MANUFACTURING INFORMATION, AND/OR ANY OTHER RIGHTS, AND TO ANY OTHER PERSONS, SHALL BE LOANED, REPRODUCED, COPIED, OR IN ANY MANNER DISCLOSED TO OTHERS. THE FOREGOING LIMITS DO NOT APPLY TO UNPUBLISHED PATENTS.

PATENT PENDING

REVISIONS:				
ZONE	LR	DESCRIPTION	DATE	APPROVED
SEE SHT. 1 FOR NOTES				

- NOTES:
1. REMOVE ALL BURRS AND BREAK SHARP EDGES.



-402, -404, -406 SHOWN

QTY REQD	PART / EBRT NO.	DESCRIPTION	MATERIAL / SPECIFICATION	REV
UNLESS OTHERWISE SPECIFIED: DIMENSIONS ARE IN INCHES		CONTRACT NO.	SKYLOCK INDUSTRIES INCORPORATED MONROVIA, CALIFORNIA, USA	
TOLERANCES	ANGULAR	DRAWN BY	1-3-91	
JOB 1/32	1/2	JL		
JOB 1/64	1/4	CHECK		
DO NOT SCALE DRAWING		DESIGN	9-28-91	
USED ON		DESIGN ACTIVITY	SC	
FORM		CUSTOMER	FILE NO.	REV.
NOTED			D 51941	20657 C
			SCALE 1:1	RELEASE DATE
				SHEET 2 OF 2

PART 2 OF 2