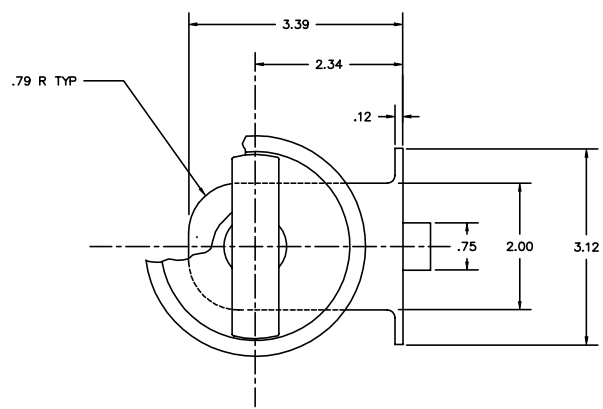
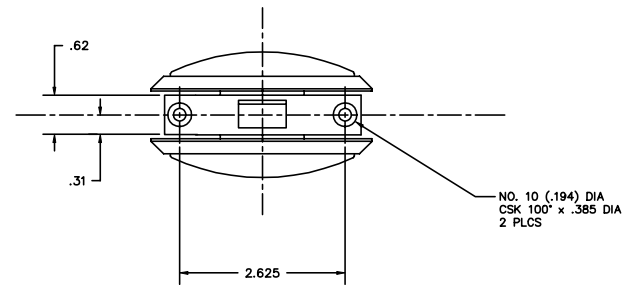
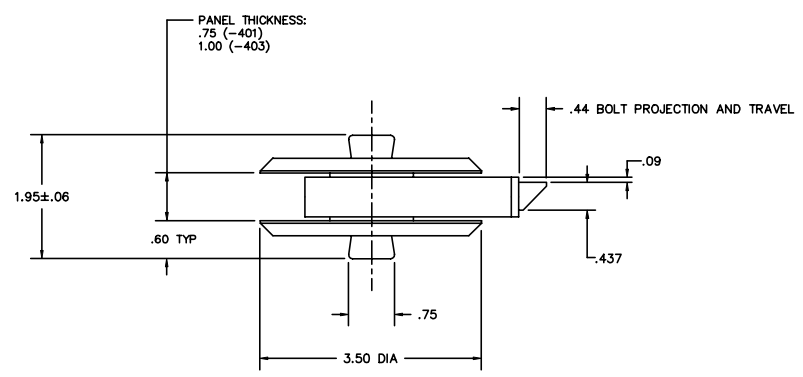


ALL INFORMATION AND DESIGN HEREIN ARE ORIGINATED BY AND IS THE PROPERTY OF SKYLOCK INDUSTRIES INCORPORATED. UNLESS OTHERWISE SPECIFICALLY INDICATED, ALL RIGHTS, INCLUDING DESIGN, MANUFACTURING INFORMATION, AND ALL OTHER RIGHTS, ARE RESERVED BY SKYLOCK INDUSTRIES INCORPORATED. THIS DRAWING IS THE PROPERTY OF SKYLOCK INDUSTRIES INCORPORATED AND IS NOT TO BE REPRODUCED OR TRANSMITTED IN ANY FORM OR BY ANY MEANS, ELECTRONIC OR MECHANICAL, INCLUDING PHOTOCOPYING, RECORDING, OR BY ANY INFORMATION STORAGE AND RETRIEVAL SYSTEM, WITHOUT THE WRITTEN PERMISSION OF SKYLOCK INDUSTRIES INCORPORATED.

REVISIONS:				
ZONE	LR	DESCRIPTION	DATE	APPROVED
NC		PRODUCTION RELEASE	10/9	SC
A		ADD -403	2.92	SC

- NOTES:
1. REMOVE ALL BURRS AND BREAK SHARP EDGES.
  2. MAT'L: KNOBS, ESCUTCHEON AND CASE; ALUM ALLOY;  
BUSHING AND BOLT; NYLON 6/6;  
SPRINGS AND ALL OTHER COMPONENTS; 300 SERIES CRES
  3. FINISH: ALUM; CLEAR ANODIZE  
CRES; PASSIVATE
  4. DECORATIVE FINISH: SATIN BRUSH
  5. OPERATION: KNOB ON EITHER SIDE RETRACTS BOLT AT ANY TIME
  6. LATCH IS REPAIRABLE PER ATA 100
  7. USE WITH STRIKER NO. 20258



	-403	LATCH ASSY		
	-401	LATCH ASSY		
QTY REQD	PART / IDENT NO.	DESCRIPTION	MATERIAL / SPECIFICATION	REV NO.

UNLESS OTHERWISE SPECIFIED: DIMENSIONS ARE IN INCHES		CONTRACT NO.		 SKYLOCK INDUSTRIES INCORPORATED MONROVIA, CALIFORNIA, USA
TOLERANCES	ANGULAR	DRAWN BY		
DECIMALS	1/32	S. CSIK		
JOG & GD	1/32	CHECK		
300 & 400	1/64	DESIGN	S. CSIK	
DO NOT SCALE DRAWING		DESIGN ACTIVITY		
NEXT ASST	PRVL ASST	USED ON		
		PREP		
		ACT BY		
		DATE BY		
		CUSTOMER		

SIZE	FRM NO.	DRAWING NO.	REV.
D	51941	20687	A
SCALE	1/1	RELEASE DATE	10/9/90
		SHEET	1 OF 1