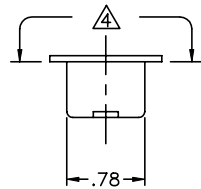
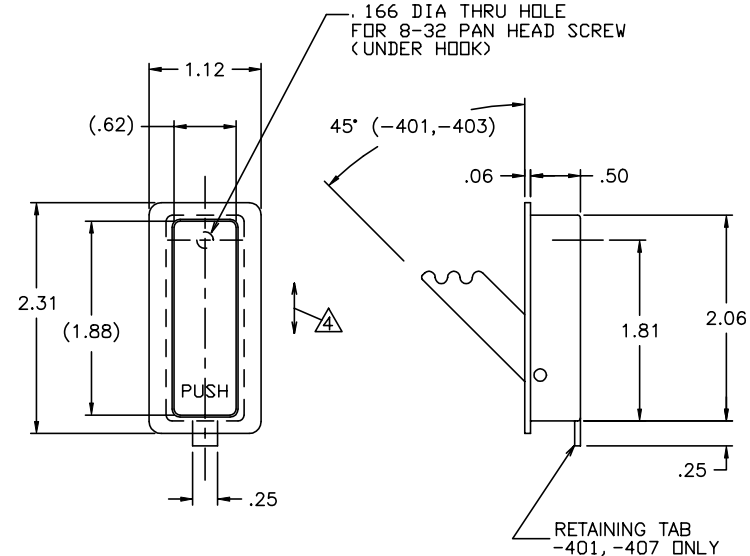
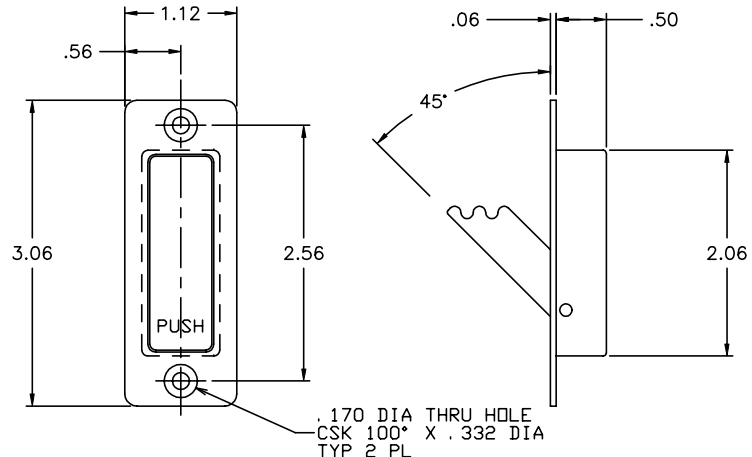
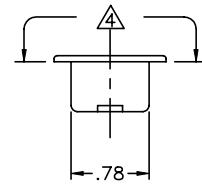


THE INFORMATION AND DESIGN HEREIN WAS ORIGINATED BY AND IS THE PROPERTY OF SKYLOCK INDUSTRIES INCORPORATED. SKYLOCK INDUSTRIES INCORPORATED RESERVES ALL PATENT, PROPRIETARY, DESIGN MANUFACTURING, REPRODUCTION, USE AND SALES RIGHTS THERE TO, AND TO ANY ARTICLE DISCLOSED THEREIN EXCEPT TO THE EXTENT RIGHTS ARE EXPRESSLY GRANTED TO OTHERS. THE FOREGOING DOES NOT APPLY TO VENDOR PROPRIETARY PARTS.

REVISIONS				
ZONE	LTR	DESCRIPTION	DATE	APPROVED
	D	ADDED -405	4-30-92	T. CSIK
	E	ADDED -407	1-18-94	T. CSIK
	F	SEE DCR NO. 016	12/9/98	T. CSIK
	G	SEE ECN G	5/25/99	T. CSIK



-405 COAT HOOK



-401 COAT HOOK
-403 COAT HOOK
-407 COAT HOOK

5. PER FAR 45.15. PARTS WILL IDENTIFIED WITH:
1. FAA-PMA.
 2. SKYLOCK IND. INC.
 3. PART NO.
 4. AIRCRAFT ELIGIBILITY.

- △ DECORATIVE FINISH REF.: SATIN BRUSH LENGTHWISE TO PART SURFACE AS INDICATED.
3. FINISH REF.: HOOK & ESCUTCHEON; CLEAR ANODIZE PER MIL-A-8625, TYPE II, CLASS 1 OR EQUIV. CRES. COMPONENTS; PASSIVATE PER AMS-QQ-P-35, TYPE II, OR EQUIV.
 2. MAT'L REF.: HOOK & ESCUTCHEON; 6061-T6/T651 PER ASTM B-221, OR EQUIV. PIN & SPRING; 303 CRES, COND. A, PER AMS-5640N OR EQUIVALENT.
 1. REMOVE ALL BURRS AND BREAK SHARP EDGES.
- NOTES: UNLESS OTHERWISE SPECIFIED.

PART NO.	DESCRIPTION	MATERIAL	SIZE	APPLICATION	ITEM NO.
-407	COAT HOOK				
-405	COAT HOOK				
-403	COAT HOOK				
-401	COAT HOOK				

PARTS LIST		DRAWN BY		DATE		SKYLOCK INDUSTRIES INCORPORATED MONROVIA CALIFORNIA U. S. A.	
UNLESS OTHERWISE SPECIFIED		S. CSIK		12-15-92			
DIMENSIONS ARE IN INCHES		CHECKED		12-09/98			
TOLERANCES ON		ENGINEER		12/09/98			
DECIMALS ANGLES DRILLED HOLES		T. CSIK					
.X .1 0° 30' AND 10387		MFG		12-15-98		<p style="text-align: center; font-size: 24pt; font-weight: bold;">COAT HOOK</p>	
.XX .03		Q. C.		12-28-98			
.XXX .010		J.VIVIRITO					
DO NOT SCALE THIS DRAWING		USED ON					
MATERIAL - FINISH				SIZE		CODE IDENT. NO.	
MANUFACTURE IN ACCORDANCE WITH SKYLOCK IND. INC., QUALITY CONTROL MANUAL QC.001				C		51941	
				DRAWING NO.		20691	
				SCALE		SHEET 1 OF 1	
				1:1		G	