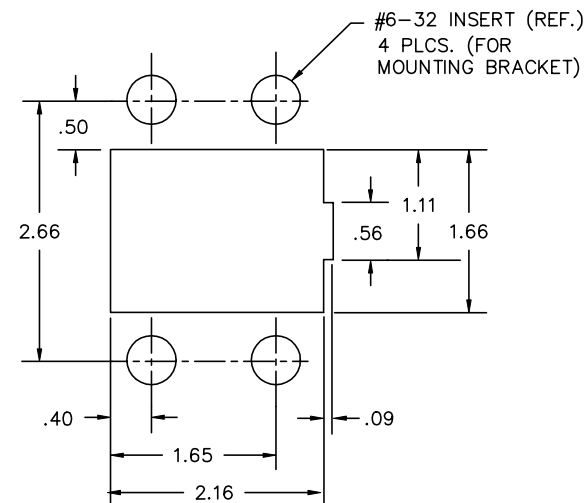
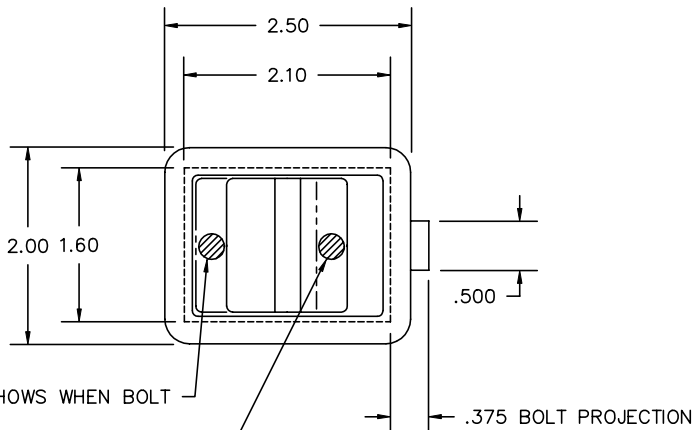


THE INFORMATION AND DESIGN HEREIN WAS ORIGINATED BY AND IS THE PROPERTY OF SKYLOCK INDUSTRIES INCORPORATED. SKYLOCK INDUSTRIES INCORPORATED RESERVES ALL PATENT, PROPRIETARY, DESIGN MANUFACTURING, REPRODUCTION, USE AND SALES RIGHTS THERETO, AND TO ANY ARTICLE DISCLOSED THEREIN EXCEPT TO THE EXTENT RIGHTS ARE EXPRESSLY GRANTED TO OTHERS. THE FOREGOING DOES NOT APPLY TO VENDOR PROPRIETARY PARTS.

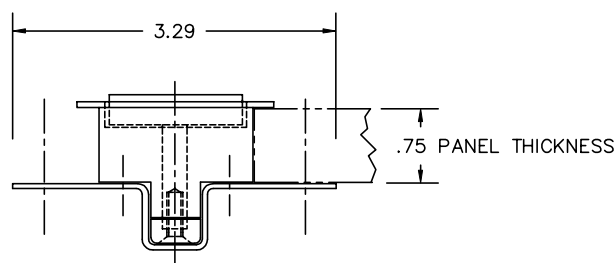
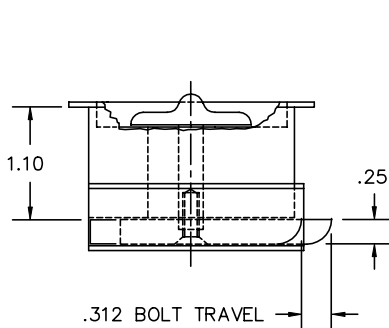
REVISIONS:				
ZONE	LTR.	DESCRIPTION	DATE	APPROVED
	NC	PRODUCTION RELEASE	3-18-91	TC

NOTES: UNLESS OTHERWISE SPECIFIED

1. REMOVE ALL BURRS AND SHARP EDGES
2. MATERIAL: HANDLE, CASE, BOLT, MOUNTING BRACKET; 6061-T6 ALUM.
ALL OTHER PARTS; CRES
SCREWS, CARBON STEEL
3. FINISH: STEEL; CAD. PLATE CRES, PASSIVATE
ALUM.; SATIN BRUSH IN DIRECTION SHOWN AND IN AREAS SHOWN, CLEAR ANODIZE.
BOLT; HARD ANODIZE
4. STATIC LOAD: 600 LBS.
5. BOLT IS DETENTED IN EXTENDED AND RETRACTED POSITIONS.



SUGGESTED PANEL CUTOUT AND INSERT LOCATIONS FOR MOUNTING BRACKET



QTY REQ'D		-1 LATCH ASSY		MATERIAL / SPECIFICATION		ITEM NO.
PART / IDENT NO.		DESCRIPTION				
UNLESS OTHERWISE SPECIFIED: DIMENSIONS ARE IN INCHES		CONTRACT NO.		SKYLOCK INDUSTRIES INCORPORATED MONROVIA, CALIFORNIA, USA		LATCH ASSEMBLY
TOLERANCES		DRAWN BY				
DECIMALS .XX ±.03		ANGULAR ± 0 30'		JL		3-15-91
DO NOT SCALE DRAWING		CHECK		TC		3-15-91
NEXT ASSY		FINAL ASSY		DESIGN		TC
				3-15-91		
USED ON		DESIGN ACTIVITY		SIZE	FSCM NO.	DRAWING NO.
				C	51941	20702
FINISH NOTED		ACT WT		CALC WT		CUSTOMER
						SCALE NONE
						RELEASE DATE
						SHEET 1 OF 1

DRAWING NO. SHEET OF REV.