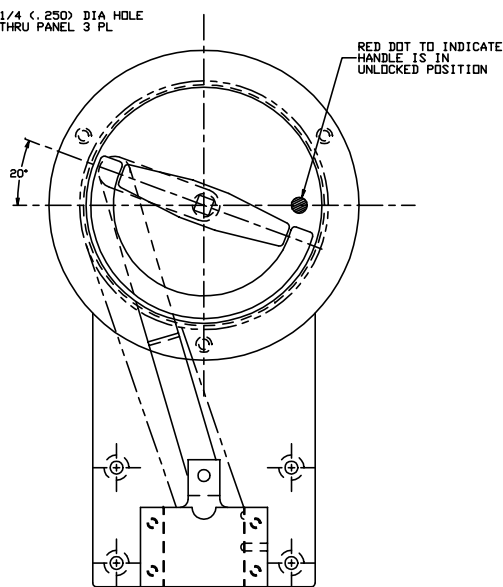
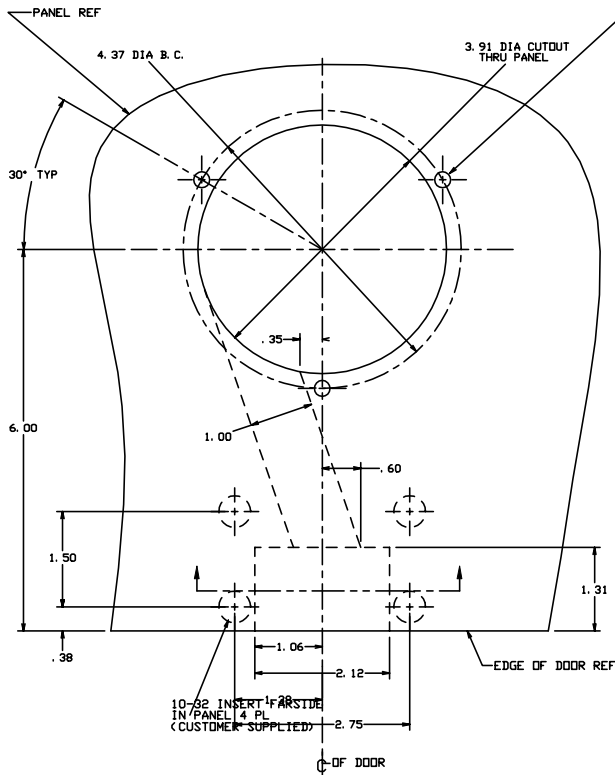


THE INFORMATION AND DESIGN HEREIN WAS OBTAINED BY AND IS THE PROPERTY OF SOLIDEX INDUSTRIES INCORPORATED. SOLIDEX INDUSTRIES INCORPORATED RECEIVES ALL PATENT, PROPRIETARY, DESIGN MANUFACTURING INFORMATION, USE AND SALES RIGHTS THEREIN, AND TO ANY ARTICLES DEVELOPED THEREIN EXCEPT TO THE EXTENT RIGHTS ARE EXPRESSLY GRANTED TO OTHERS. THE FOREGOING DOES NOT APPLY TO NON-PATENTED PARTS.

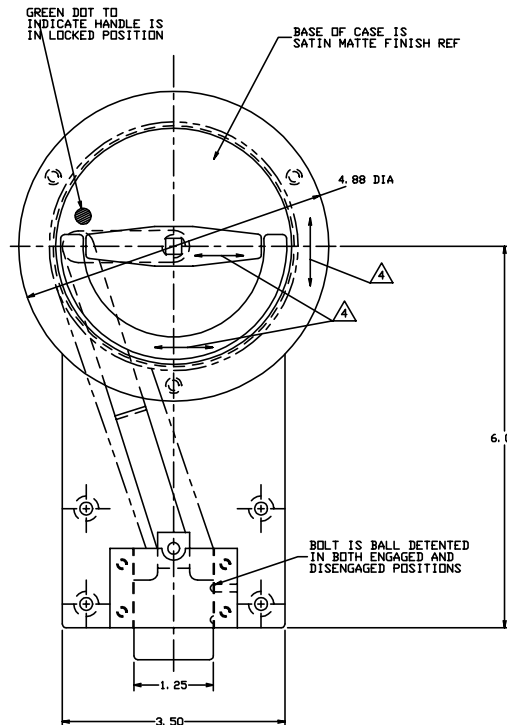
NOTES: UNLESS OTHERWISE SPECIFIED.

1. REMOVE ALL BURRS AND BREAK SHARP EDGES.
  2. MAT'L: HANDLE, CROSSBAR, BOLT CASE AND BACK MOUNTING PLATE; ALUM. ALLOY, CUP, BOLT, LINKAGE AND ALL OTHER COMPS; ST. STL.
  3. FINISH: ALUM.; CLEAR ANODIZE PER MIL-A-8625E. ST. STL.; CLEAN AND PASSIVATE.
- ⚠️ DECORATIVE FINISH: HANDLE AND BASE FLANGE ARE SATIN BRUSHED ON TOP SURFACES, BASE OF CASE IS SATIN MATTE.

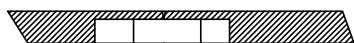
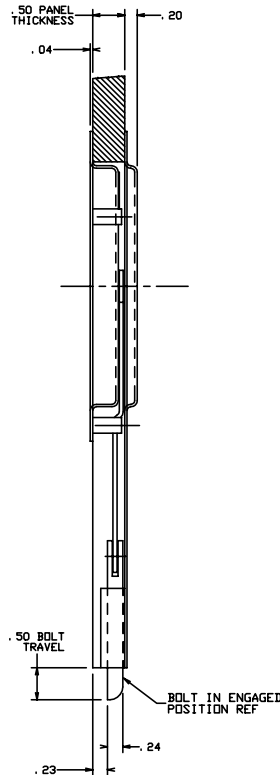
| REVISIONS |     |  |         |          |
|-----------|-----|--|---------|----------|
| ZONE      | LTR | DESCRIPTION  | DATE    | APPROVED |
| NC        |     | PRODUCTION RELEASE   | 6-21-91 | T. C.    |
| A         |     | ADDED GRAB DIRECTION FOR FIRST ARTICLE. HANDLE ROTATES TO HORIZONTAL POSITION WHEN ENGAGED PER CUSTOMER REQUEST. | 6-21-91 | T. C.    |



BOLTING SYSTEM SHOWN IN DISENGAGED POSITION



BOLTING SYSTEM SHOWN IN ENGAGED POSITION



SUGGESTED PANEL CUTOUT SHOWN

| -401                      |          | BOLTING SYSTEM |          |  |               |
|---------------------------|----------|----------------|----------|--|---------------|
| QTY REQD                  | PART NO. | DESCRIPTION    | MATERIAL | SIZE   | SPECIFICATION |
| PARTS LIST                |          |                |          |  |               |
| DRAWN BY T. CSIK          |          | 6-19-91        |          | <br>SOLIDEX INDUSTRIES INCORPORATED<br>RANCHO CALIFORNIA |               |
| CHECKED                   |          |                |          |  |               |
| TELEDIMENSIONS ON         |          | DRILLED HOLES  |          | <b>DOOR BOLTING SYSTEM</b>                               |               |
| DECIMALS                  |          | ANGLES         |          |  |               |
| : 1/16" = .0625"          |          | : 30° AND 150° |          | APPROVAL T. CSIK 6-21-91                                 |               |
| DO NOT SCALE THIS DRAWING |          | APPROVAL       |          | SIZE D CODE ENGR. NO. 51941 DRAWING NO. 20707 REV. A     |               |
| MATERIAL - FINISH         |          | USED ON        |          | SCALE 1:1  |               |
| NEXT ASBY                 |          |                |          | SHEET 1 OF 1   |               |
| FINAL ASBY                |          |                |          |  |               |