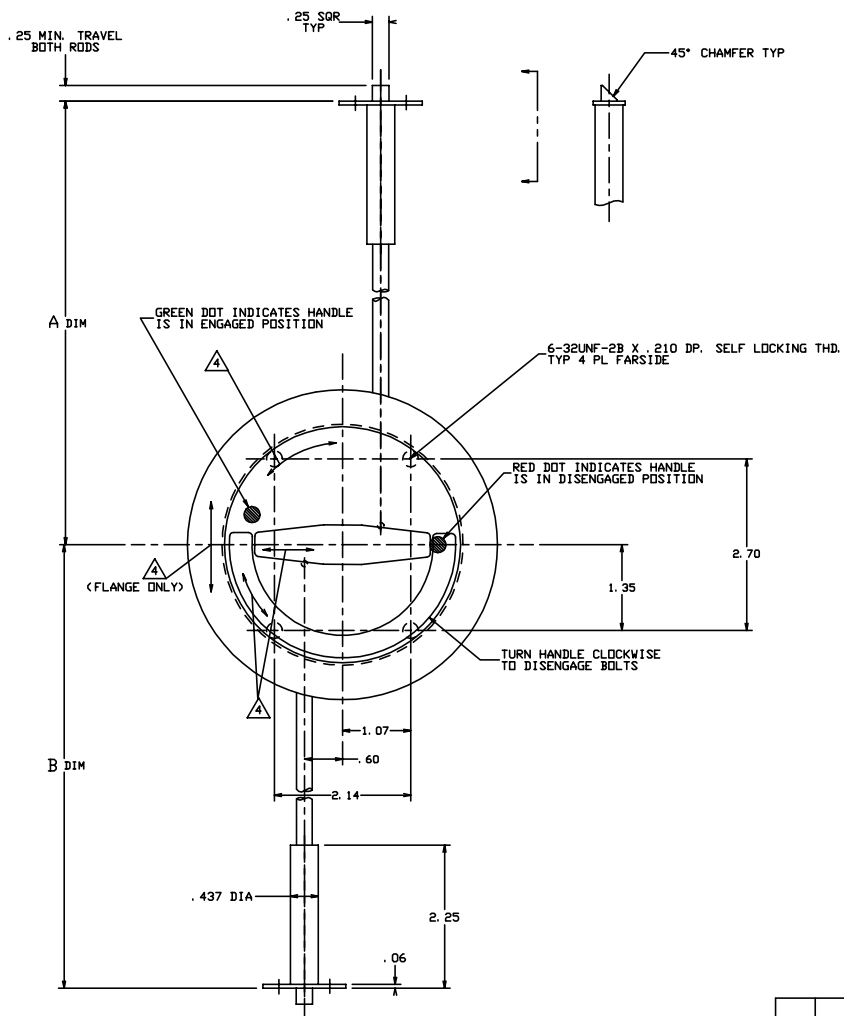


THE INFORMATION AND DESIGN HEREIN WAS ORIGINATED BY AND IS THE PROPERTY OF SOLIDIX INDUSTRIES INCORPORATED. SOLIDIX INDUSTRIES INCORPORATED RESERVES ALL PATENT, PROPRIETARY, DESIGN MANUFACTURING INFORMATION, USE AND SALES RIGHTS HEREIN, AND TO ANY ARTICLE REPRODUCED THEREIN EXCEPT TO THE EXTENT RIGHTS ARE EXPRESSLY GRANTED TO OTHERS. THE PROVISIONS DOES NOT APPLY TO NON-PATENTED PARTS.

- NOTES: UNLESS OTHERWISE SPECIFIED.
1. REMOVE ALL BURRS AND BREAK SHARP EDGES.
 2. MAT'L: *D* HANDLE AND TEE BAR, 6061-T6 ALUM. ALLOY, ALL OTHER PARTS, 300 SERIES CRES.
 3. FINISH: ALUM., CLEAR ANODIZE PER MIL-A-8625E. ST. STL. CLEAN AND PASSIVATE.
 4. DECORATIVE FINISH: HANDLE AND CUP ARE SATIN BRUSHED ON TOP SURFACES.
 5. BOLTING SYSTEM TO BE SPRING LOADED TO THE ENGAGED POSITION.
 6. *D* HANDLE TO BE SPRING LOADED DOWN.

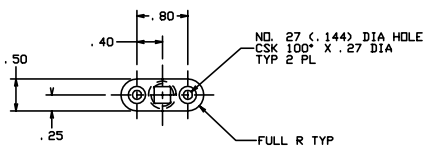


REVISIONS				
ZONE	LTR	DESCRIPTION	DATE	APPROVED
NC		PRODUCTION RELEASE	8-22-91	T. C.
A		REVISED BY S.F. AND L. WILSON. REVISED BY J. H. BATES. REVISED BY C. S. 307. REVISED BY S.F.	9-26-91	T. C.

EXAMPLE:

20721-401-100-100

-402	FIRST TWO DIGITS (INCHES) THIRD DIGIT (TENTH IN.) A DIM.	FIRST TWO DIGITS (INCHES) THIRD DIGIT (TENTH IN.) B DIM.
-401	FIRST TWO DIGITS (INCHES) THIRD DIGIT (TENTH IN.) A DIM.	FIRST TWO DIGITS (INCHES) THIRD DIGIT (TENTH IN.) B DIM.
FIRST DASH NO.	SECOND DASH NO.	THIRD DASH NO.
TABULATION BLOCK		



SEE TABULATION BLOCK FOR ORDERING INFORMATION

	-402	BOLTING SYSTEM	(DPP. -401)	
	-401	BOLTING SYSTEM	(SHOWN)	
QTY REQ	PART NO.	DESCRIPTION	MATERIAL	SIZE SPECIFICATION
PARTS LIST				
UNLESS OTHERWISE SPECIFIED		DRAWN BY	T. CSIK	9-13-91
DIMENSIONS ARE IN INCHES		CHECKED		
TOLERANCES ON		ENGINEER		
DECIMALS	ANGLES	DRIILLED HOLES		
.005	± 0° 30'	AND 10007		
.0005				
DO NOT SCALE THIS DRAWING		APPROVAL	T. CSIK	9-13-91
MATERIAL - FINISH		USED ON		
NEXT ASBY				
FINAL ASBY				
SIZE	D	CODE IDENT. NO.	51941	DRAWING NO.
				20721
				REV. A
SCALE	1:1	VT.		SHEET 1 OF 1



2 POINT
DOOR BOLTING SYSTEM