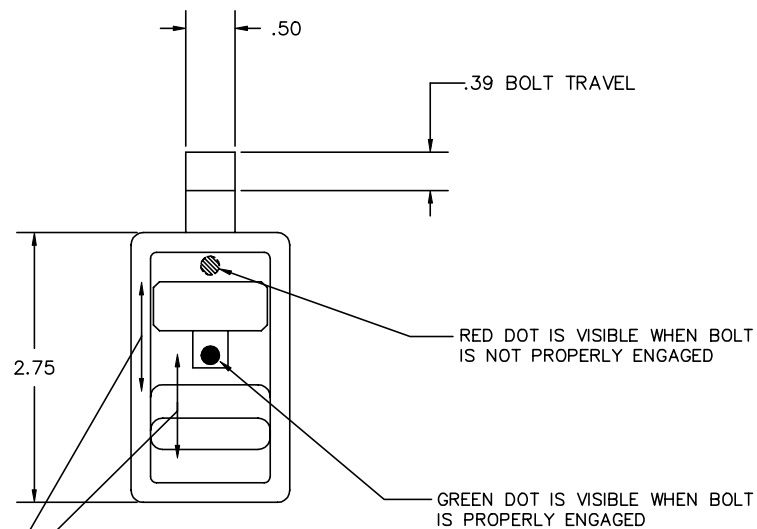
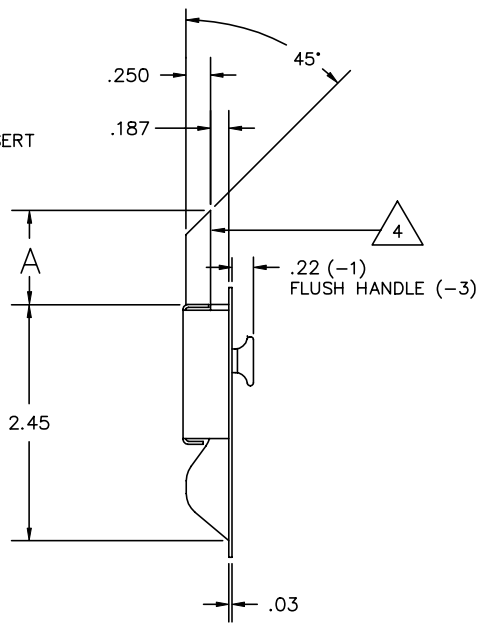
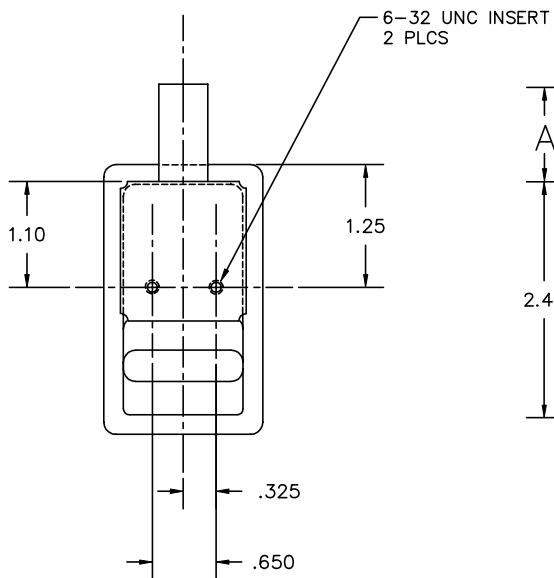
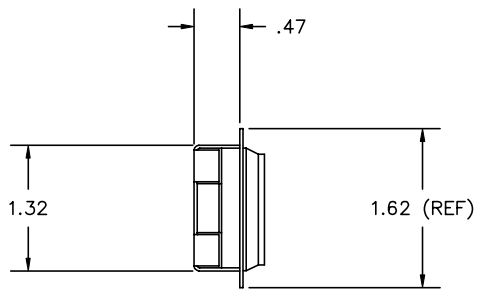


THE INFORMATION AND DESIGN HEREIN WAS ORIGINATED BY AND IS THE PROPERTY OF SKYLOCK INDUSTRIES INCORPORATED. SKYLOCK INDUSTRIES INCORPORATED RESERVES ALL PATENT, PROPRIETARY, DESIGN MANUFACTURING, REPRODUCTION, USE AND SALES RIGHTS THEREON, AND TO ANY ARTICLE DISCLOSED THEREIN EXCEPT TO THE EXTENT RIGHTS ARE EXPRESSLY GRANTED TO OTHERS. THE FOREGOING DOES NOT APPLY TO VENDOR PROPRIETARY PARTS.

REVISIONS				
ZONE	LTR.	DESCRIPTION	DATE	APPROVED
	NC	PRODUCTION RELEASE	8.26.91	SC
	A	ADDED -3	9.13.91	SC

NOTES: UNLESS OTHERWISE SPECIFIED

1. REMOVE ALL BURRS AND SHARP EDGES
2. MAT'L: HANDLE; ALUM ALLOY; ALL OTHER COMPONENTS; 300 SERIES CRES
3. FINISH: ALUM; SATIN BRUSH AND CLEAR ANODIZE; CRES PARTS; PASSIVATE
4. STATIC LOAD: 800 LBS
5. LATCH IS SPRING LOADED AND ALWAYS FREE TO ENGAGE



.82		-3	LATCH ASSY		
.82		-1	LATCH ASSY		
A	QTY. REQ'D	PART / IDENT NO.	DESCRIPTION	MATERIAL / SPECIFICATION	ITEM NO.
UNLESS OTHERWISE SPECIFIED: DIMENSIONS ARE IN INCHES			CONTRACT NO.	 SKYLOCK INDUSTRIES INCORPORATED MONROVIA, CALIFORNIA, USA	
TOLERANCES DECIMALS .XX ±.03 ANGULAR ± 0 30' .XXX ±.010			CUSTOMER		
DO NOT SCALE DRAWING			DRAWN BY S. CSIK	LATCH ASSY-SLAM	
NEXT ASSY		FINAL ASSY	DESIGN	REV. A	
USED ON			DESIGN ACTIVITY	SIZE C	FSCM NO. 51941
FINISH		ACT WT	CALC WT	DRAWING NO. 20724	REV. A
				SCALE 1/1	RELEASE DATE 8.26.91
				SHEET 1	OF 1

DRAWING NO. SHEET OF