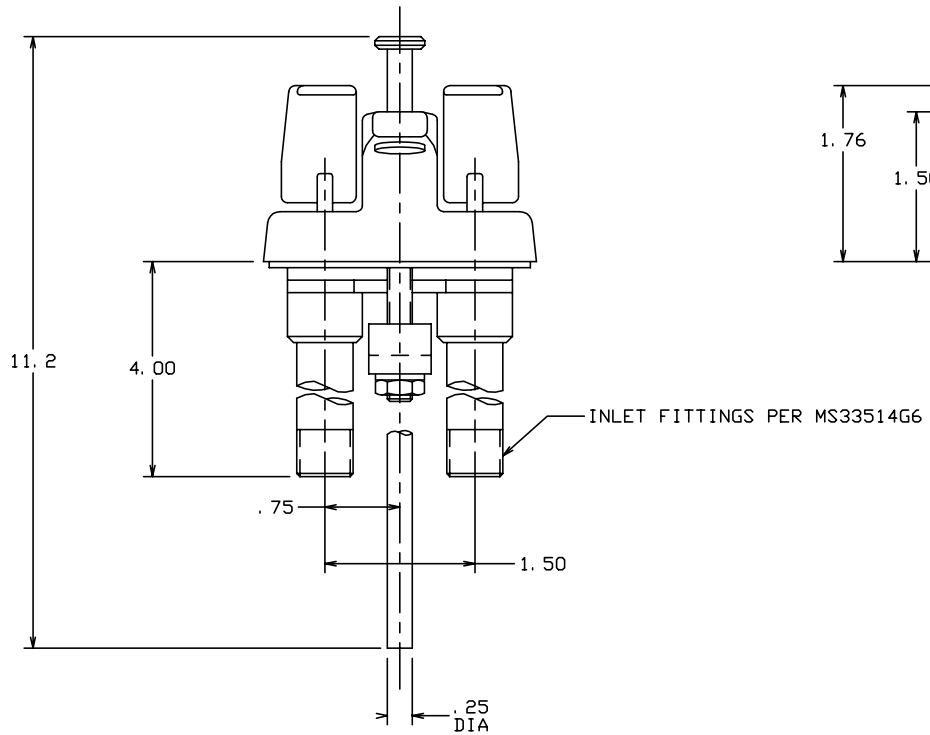
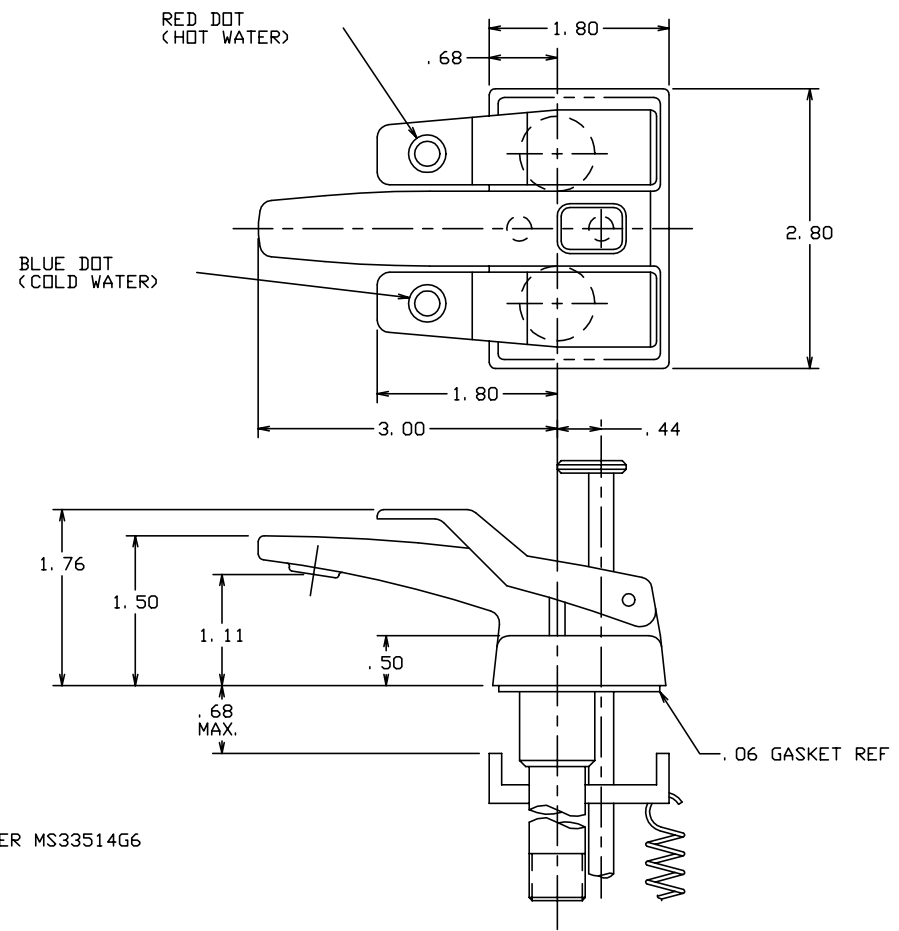
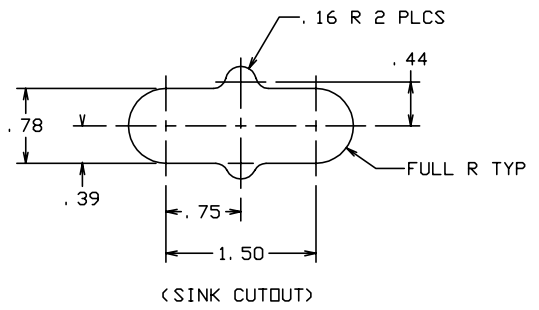


THE INFORMATION AND DESIGN HEREIN WAS ORIGINATED BY AND IS THE PROPERTY OF SKYLOCK INDUSTRIES INCORPORATED. SKYLOCK INDUSTRIES INCORPORATED RESERVES ALL PATENT, PROPRIETARY, DESIGN MANUFACTURING, REPRODUCTION, USE AND SALES RIGHTS THERE TO, AND TO ANY ARTICLE DISCLOSED THEREIN EXCEPT TO THE EXTENT RIGHTS ARE EXPRESSLY GRANTED TO OTHERS. THE FOREGOING DOES NOT APPLY TO VENDOR PROPRIETARY PARTS.

REVISIONS				
ZONE	LTR	DESCRIPTION	DATE	APPROVED
	A	REDRAWN, ADDED .25 DIA TO ROD	12-13-94	S. CSIK

- NOTES: UNLESS OTHERWISE SPECIFIED.
- MAT'L: FAUCET BODY, HANDLES, PLUNGER, VALVES - 300 SERIES CRES.; GASKET AND O-RINGS - RUBBER.
  - DECORATIVE FINISH: SATIN BRUSH APPEARANCE SURFACES.



-401 FAUCET ASSY		MATERIAL SIZE SPECIFICATION		ITEM NO.
QTY REQD	PART NO.	DESCRIPTION		
PARTS LIST				
UNLESS OTHERWISE SPECIFIED		DRAWN BY S. CSIK	10-3-91	SKYLOCK INDUSTRIES INCORPORATED MONROVIA CALIFORNIA U. S. A.
DIMENSIONS ARE IN INCHES		CHECKED		
TOLERANCES ON		ENGINEER		
DECIMALS ANGLES DRILLED HOLES		PROJECT		
.X ± .1 ± 0° 30' AND 10387		APPROVAL		FAUCET ASSY
.XX ± .03		APPROVAL		
.XXX ± .010		APPROVAL		
DO NOT SCALE THIS DRAWING				
MATERIAL - FINISH		USED ON	SIZE C	CODE IDENT. NO. 51941
NEXT ASSY			DRAWING NO. 20735	
FINAL ASSY			SCALE 1/1	REV. A
			WT.	SHEET 1 OF 1

FLUID MEDIA	TYPE	OPERATING PRESSURE	OPERATING TEMP.	FLOW
POTABLE WATER	SELF VENTING & BLEEDING	0-125 PSIG	35°F TO 225°F	100/140 OZ. /MIN. AT 70°F AND 30 P. S. I. INLET PRESSURE