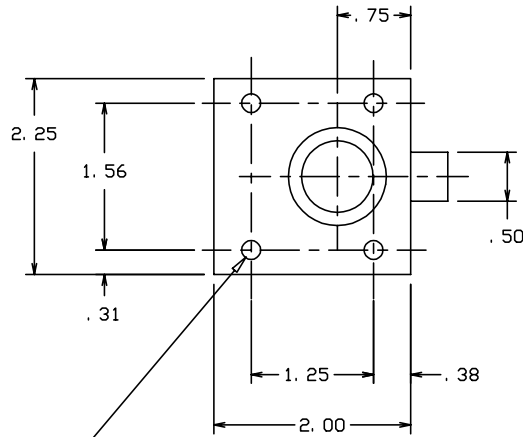


THE INFORMATION AND DESIGN HEREIN WAS ORIGINATED BY AND IS THE PROPERTY OF SKYLOCK INDUSTRIES INCORPORATED. SKYLOCK INDUSTRIES INCORPORATED RESERVES ALL PATENT, PROPRIETARY, DESIGN MANUFACTURING, REPRODUCTION, USE AND SALES RIGHTS THERETO, AND TO ANY ARTICLE DISCLOSED THEREIN EXCEPT TO THE EXTENT RIGHTS ARE EXPRESSLY GRANTED TO OTHERS. THE FOREGOING DOES NOT APPLY TO VENDOR PROPRIETARY PARTS.

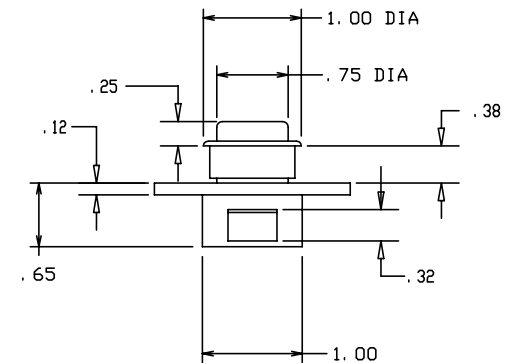
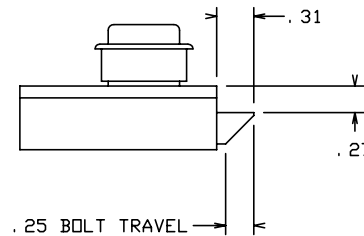
REVISIONS				
ZONE	LTR.	DESCRIPTION	DATE	APPROVED
	NC	PRODUCTION RELEASE	4. 29. 92	SC

NOTES: UNLESS OTHERWISE SPECIFIED

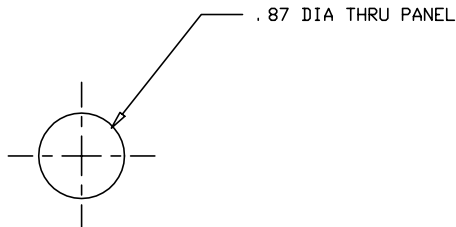
1. REMOVE ALL BURRS AND SHARP EDGES
2. MAT'L: HOUSING, CASE, BOLT, BUTTON, AND ESCUTCHEON; ALUM ALLOY; ALL OTHER COMPONENTS; CRES
3. FINISH: ALUM; CLEAR ANODIZE; BUTTON AND ESCUTCHEON; SATIN BRUSH AND CLEAR ANODIZE; CRES; PASSIVATE
4. OPERATION: PUSH BUTTON TO RETRACT BOLT



NO. 10 (.194) DIA THRU
4 PLCS



SUGGESTED PANEL CUTOUT



QTY. REQ'D	PART / IDENT NO.	DESCRIPTION	MATERIAL / SPECIFICATION	ITEM NO.
	-1	LATCH ASSY		
UNLESS OTHERWISE SPECIFIED DIMENSIONS ARE IN INCHES		CONTRACT NO.	 SKYLOCK INDUSTRIES INCORPORATED MONROVIA, CALIFORNIA, USA	
TOLERANCES		CUSTOMER		
DECIMALS	ANGULAR	DRAWN BY	DATE	
.XX .03	0 30'	S. CSIK		
.XXX .010		CHECK		
DO NOT SCALE DRAWING		DESIGN	<p style="text-align: center;">LATCH ASSY</p>	
NEXT ASSY	FINAL ASSY	DESIGN ACTIVITY		
USED ON	DESIGN ACTIVITY		SIZE	REV.
FINISH	ACT WT	CALC WT	C 51941	NC
			DRAWING NO. 20761	
			SCALE 1/1	REV. 1
			RELEASE DATE 4. 29. 92	SHEET 1 OF 1

DRAWING NO.

SHEET

A