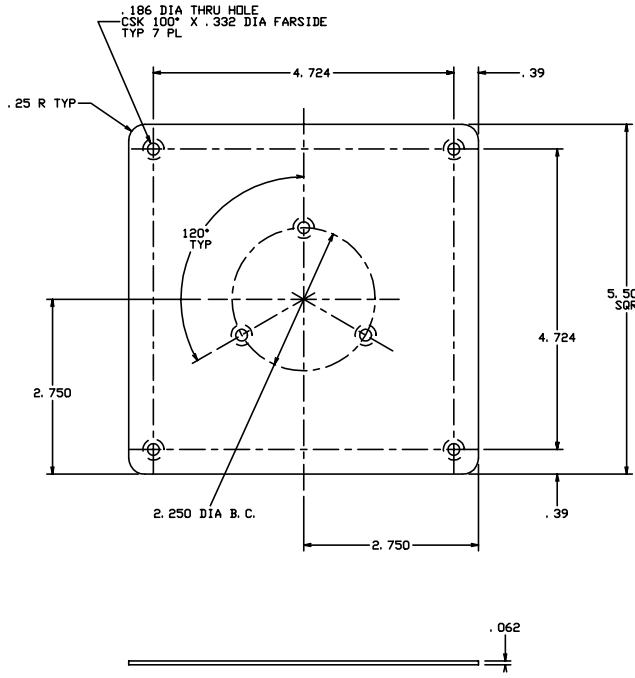


THE INFORMATION AND DESIGN HEREIN WAS ORIGINATED BY AND IS THE PROPERTY OF SOLIDEX INDUSTRIES INCORPORATED. SOLIDEX INDUSTRIES INCORPORATED RESERVES ALL PATENT, PROPRIETARY, DESIGN MANUFACTURING INFORMATION, USE AND SALES RIGHTS HEREIN, AND TO ANY ARTICLES DEVELOPED THEREIN EXCEPT TO THE EXTENT RIGHTS ARE EXPRESSLY GRANTED TO OTHERS. THE FOREGOING DOES NOT APPLY TO NON-PATENTED PARTS.

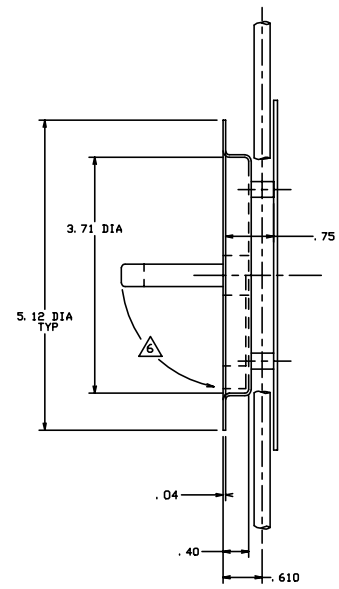
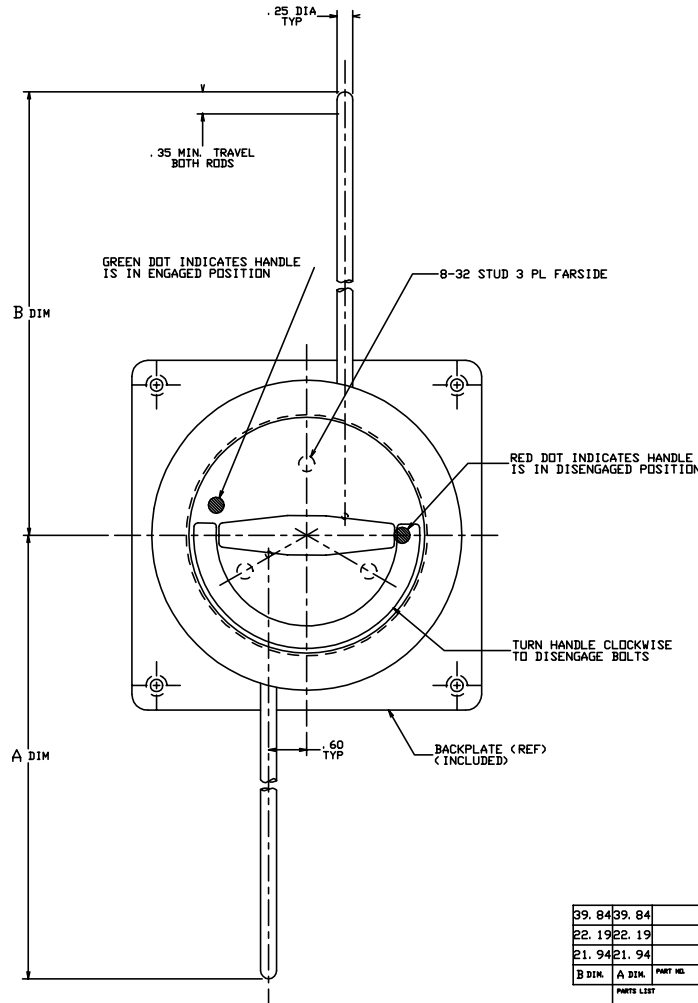
NOTES: UNLESS OTHERWISE SPECIFIED.

1. REMOVE ALL BURRS AND BREAK SHARP EDGES.
  2. MAT'L: \*D\* HANDLE, TEE BAR & BACKPLATE; 6061-T6 ALUM. ALLOY, ALL OTHER PARTS; 300 SERIES CRES.
  3. FINISH: ALUM.; CLEAR ANODIZE PER MIL-A-8625E. ST. STL.; CLEAN AND PASSIVATE.
  4. DECORATIVE FINISH: HANDLE AND CUP ARE SATIN BRUSHED ON TOP SURFACES.
  5. BOLTING SYSTEM TO BE DETENTED IN ENGAGED AND DISENGAGED POSITIONS.
- ⚠ \*D\* HANDLE TO BE SPRING LOADED DOWN.

REVISIONS				
ZONE	LTR	DESCRIPTION	DATE	APPROVED
NC		PRODUCTION RELEASE	10-26-92	T. C.
A		ADDED -405	2-9-94	T. C.



BACKPLATE



B DIM.	A DIM.	PART NO.	DESCRIPTION	MATERIAL	SIZE	SPECIFICATION	ITEM NO.
39.84	39.84	-405	BOLTING SYSTEM				
22.19	22.19	-403	BOLTING SYSTEM				
21.94	21.94	-401	BOLTING SYSTEM				

PARTS LIST		DRAWN BY T. CSIK 10-06-92		SOLIDEX INDUSTRIES INCORPORATED RANCHO CALIFORNIA	
UNLESS OTHERWISE SPECIFIED	CHECKED	PROJECT	APPROVAL T. CSIK 10-06-92	2 POINT DOOR BOLTING SYSTEM	
DIMENSIONS ARE IN INCHES	TELEDIMENSIONS ON	DECIMALS	ANGLES	DRIILLED HOLES	AND 10007
DO NOT SCALE THIS DRAWING	MATERIAL - FINISH	USED ON	SCALE 1:1	SIZE D	CODE IDENT. NO. 51941
	NEXT ASBY		SCALE 1:1	VT.	DRAWING NO. 20762
	FINAL ASBY				REV. A
					HEET 1 OF 1