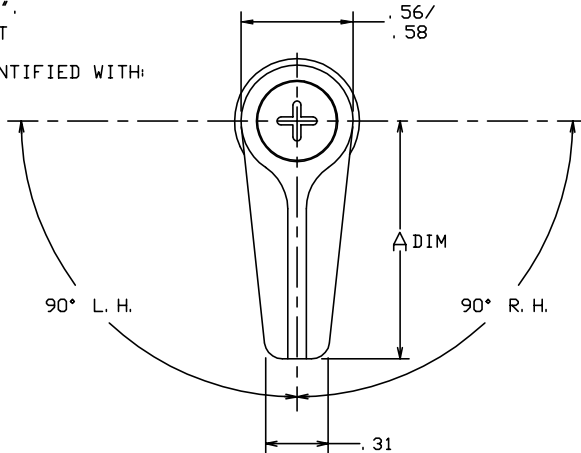


THE INFORMATION AND DESIGN HEREIN WAS ORIGINATED BY AND IS THE PROPERTY OF SKYLOCK INDUSTRIES INCORPORATED. SKYLOCK INDUSTRIES INCORPORATED RESERVES ALL PATENT, PROPRIETARY, DESIGN MANUFACTURING, REPRODUCTION, USE AND SALES RIGHTS THERE TO, AND TO ANY ARTICLE DISCLOSED THEREIN EXCEPT TO THE EXTENT RIGHTS ARE EXPRESSLY GRANTED TO OTHERS. THE FOREGOING DOES NOT APPLY TO VENDOR PROPRIETARY PARTS.

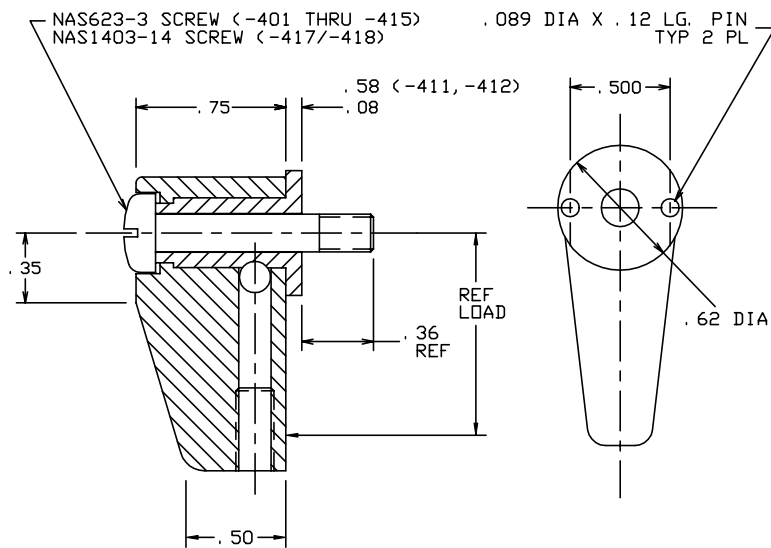
NOTES: UNLESS OTHERWISE SPECIFIED.

- REMOVE ALL BURRS AND BREAK SHARP EDGES.
- MAT'L: RETAINER; 7075-T6/T651 PER ASTM B-221, OR EQUIV. ALL OTHER PARTS; 303 OR 304 CRES, COND. A, PER AMS-5649N (303), AMS-5639E (304), OR EQUIV.
- FINISH: ALUM.; ANODIZE PER MIL-A-8625, OR EQUIV. ALL OTHER PARTS PASSIVATE PER AMS-QQ-P-35, TYPE II (303), TYPE VI, VII (304). OR EQUIV.
- DECORATIVE FINISH: RETAINER; BRIGHT POLISH, AND ANODIZE PER MIL-A-8625, TYPE II, CLASS 2, DYED CANDY APPLE RED.
- THE FOLLOWING STATIC LOAD IS FOR REFERENCE USE ONLY. IT IS PROVIDED FOR CUSTOMER ENGINEERING TO DETERMINE THE GENERAL SUITABILITY OF THE PRODUCT FOR ITS INTENDED USE. ALTHOUGH SKYLOCK IS PROVIDING THE REFERENCE STATIC LOAD, THE CUSTOMER IS ULTIMATELY RESPONSIBLE FOR CERTIFICATION OF THE PRODUCT FOR ITS SPECIFIC APPLICATION. REFERENCE STATIC LOAD: 1000 LBS. MAX. @ .62" 770 LBS. MAX. @ 1.00" 575 LBS. MAX. @ 1.25".
- APPLICABLE TO FAA-PMA REPLACEMENT OR MODIFICATION PARTS ONLY. PER FAR 45.15, PARTS WILL BE IDENTIFIED WITH:
 - FAA-PMA.
 - SKYLOCK IND. INC.
 - PART NO.
 - AIRCRAFT INSTALLATION ELIGIBILITY.

REVISIONS				
ZONE	LTR	DESCRIPTION	DATE	APPROVED
	E	NOTE IS NAS623-3 SCREW, WAS NAS623-3-13W SCREW	11-24-93	T. CSIK
	F	ADDED -415	11-16-94	T. CSIK
	G	ADDED -417/-418	3-31-97	T. CSIK
	H	UPDATED NOTE 5	7-10-97	T. CSIK
	J	SEE ECN J		



-401 THRU -418 RETAINER



.90	-410	RETAINER	<90° RIGHT HAND>	120765-410
.90	-409	RETAINER	<90° LEFT HAND>	120765-409
2.00	-407	RETAINER	<180° ROTATION>	120765-407
2.00	-406	RETAINER	<90° RIGHT HAND>	120765-406
2.00	-405	RETAINER	<90° LEFT HAND>	120765-405
1.75	-404	RETAINER	<90° RIGHT HAND>	120765-404
1.75	-403	RETAINER	<90° LEFT HAND>	120765-403
1.19	-402	RETAINER	<90° RIGHT HAND>	120765-402
1.19	-401	RETAINER	<90° LEFT HAND>	120765-401
A DIM	PART NO.	DESCRIPTION	MATERIAL SIZE SPECIFICATION	MAKE FROM

PARTS LIST								
UNLESS OTHERWISE SPECIFIED	DRAWN BY	T. CSIK	3-30-92	SKYLOCK INDUSTRIES INCORPORATED MONROVIA CALIFORNIA U. S. A.				
DIMENSIONS ARE IN INCHES	CHECKED	T. CSIK	8/18/99					
TOLERANCES ON	ENGINEER	T. CSIK	8/18/99					
DECIMALS ANGLES DRILLED HOLES	MFG	P. MATSUOKA	8/19/99					
.X ± .1	QC	J. VIVIRITO	8/18/99	20765 RETAINER				
.XXX ± .010	DO NOT SCALE THIS DRAWING							
MATERIAL - FINISH	USED ON	SIZE	CODE IDENT. NO.	DRAWING NO.	REV.			
NEXT ASSY		C	51941	20765	J			
MANUFACTURE IN ACCORDANCE WITH SKYLOCK IND. INC., QUALITY CONTROL MANUAL QC.001					SCALE	2:1	VT.	SHEET 1 OF 1