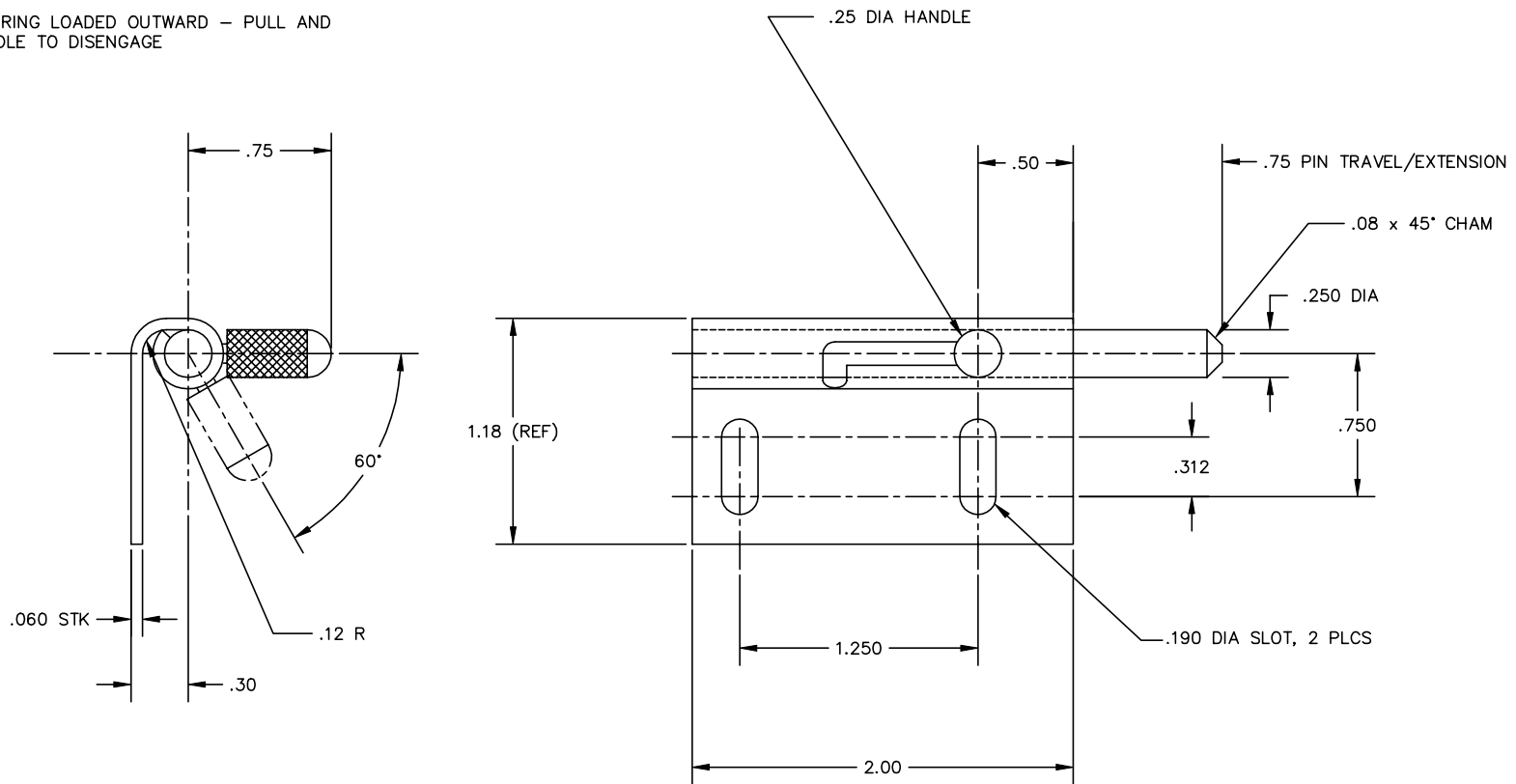


THE INFORMATION AND DESIGN HEREIN WAS ORIGINATED BY AND IS THE PROPERTY OF SKYLOCK INDUSTRIES INCORPORATED. SKYLOCK INDUSTRIES INCORPORATED RESERVES ALL PATENT, PROPRIETARY, DESIGN MANUFACTURING, REPRODUCTION, USE AND SALES RIGHTS THERE TO, AND TO ANY ARTICLE DISCLOSED THEREIN EXCEPT TO THE EXTENT RIGHTS ARE EXPRESSLY GRANTED TO OTHERS. THE FOREGOING DOES NOT APPLY TO VENDOR PROPRIETARY PARTS.

REVISIONS				
ZONE	LTR.	DESCRIPTION	DATE	APPROVED
	NC	PRODUCTION RELEASE	6.10.92	SC

NOTES: UNLESS OTHERWISE SPECIFIED

1. REMOVE ALL BURRS AND SHARP EDGES
2. MAT'L: ALL COMPONENTS: 300 SERIES CRES
3. FINISH: CLEAN AND PASSIVATE
4. BOLT IS SPRING LOADED OUTWARD - PULL AND LOCK HANDLE TO DISENGAGE



	-2	LATCH ASSY	R.H. (OPP)	
	-1	LATCH ASSY	L.H. (SHOWN)	
QTY. REQ'D	PART / IDENT NO.	DESCRIPTION	MATERIAL / SPECIFICATION	ITEM NO.
UNLESS OTHERWISE SPECIFIED: DIMENSIONS ARE IN INCHES		CONTRACT NO.	SKYLOCK INDUSTRIES INCORPORATED MONROVIA, CALIFORNIA, USA	
TOLERANCES DECIMALS .XX $\pm .03$.XXX $\pm .010$ DO NOT SCALE DRAWING		CUSTOMER		
		DRAWN BY S. CSIK	LATCH ASSY, PIN	
		CHECK		
NEXT ASSY	FINAL ASSY	DESIGN		
USED ON		DESIGN ACTIVITY	SIZE C	FSCM NO. 51941
FINISH		ACT WT	CALC WT	DRAWING NO. 20775
				REV. NC
			SCALE 2/1	RELEASE DATE 6.10.92
				SHEET 1 OF 1

OF SHEET

DRAWING NO.

A