

4

3

2

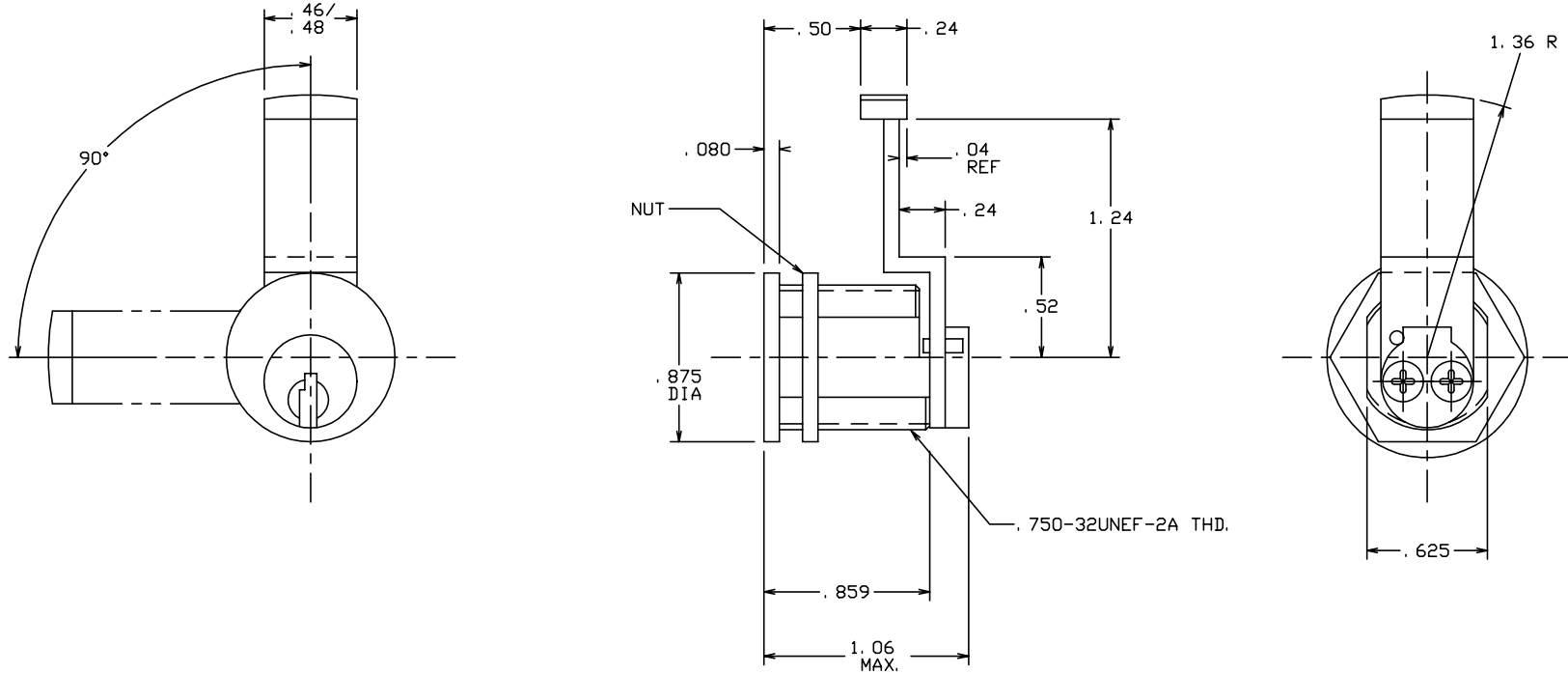
1


THE INFORMATION AND DESIGN HEREIN WAS ORIGINATED BY AND IS THE PROPERTY OF SKYLOCK INDUSTRIES INCORPORATED. SKYLOCK INDUSTRIES INCORPORATED RESERVES ALL PATENT, PROPRIETARY, DESIGN MANUFACTURING, REPRODUCTION, USE AND SALES RIGHTS THERE TO, AND TO ANY ARTICLE DISCLOSED THEREIN EXCEPT TO THE EXTENT RIGHTS ARE EXPRESSLY GRANTED TO OTHERS. THE FOREGOING DOES NOT APPLY TO VENDOR PROPRIETARY PARTS.

REVISIONS				
ZONE	LTR	DESCRIPTION	DATE	APPROVED
	NC	PRODUCTION RELEASE	8-20-92	T. CSIK
	A	REVISED PER CUSTOMER REQUEST	4-30-93	T. CSIK
	B	REVISED PER CUSTOMER REQUEST BY FAX DATED 6-2-93	6-3-93	T. CSIK

NOTES: UNLESS OTHERWISE SPECIFIED.

- MAT'L: CYLINDER, PLUG & CAM; 300 SERIES CRES, KEYING PINS AND KEYS; BRASS.
- ROTATION 90°, KEY REMOVABLE IN LOCKED OR UNLOCKED POSITION.
- FINISH: CYLINDER FACE; SATIN BRUSH, CRES PARTS; PASSIVATE.
- KEYING COMPLIES WITH T4619 KEY. 2 KEYS FURNISHED PER ASSY.



		-401	LOCK ASSY			
QTY REQD	PART NO.	DESCRIPTION		MATERIAL SIZE SPECIFICATION		ITEM NO.
PARTS LIST						
UNLESS OTHERWISE SPECIFIED			DRAWN BY	T. CSIK	8-20-92	 SKYLOCK INDUSTRIES INCORPORATED MONROVIA CALIFORNIA U. S. A.
DIMENSIONS ARE IN INCHES			CHECKED			
TOLERANCES ON			ENGINEER			
DECIMALS ANGLES DRILLED HOLES			PROJECT			
.X ± .1 ± 0° 30' AND 10387			APPROVAL	T. CSIK	8-20-92	LOCK ASSY
.XX ± .03			APPROVAL			
.XXX ± .010						
DO NOT SCALE THIS DRAWING			MATERIAL - FINISH		USED ON	SIZE
NEXT ASSY						CODE IDENT. NO.
FINAL ASSY						DRAWING NO.
						REV.
						C 51941 20786 B
						SCALE 2: 1
						WT. SHEET 1 OF 1

4

3

2

1