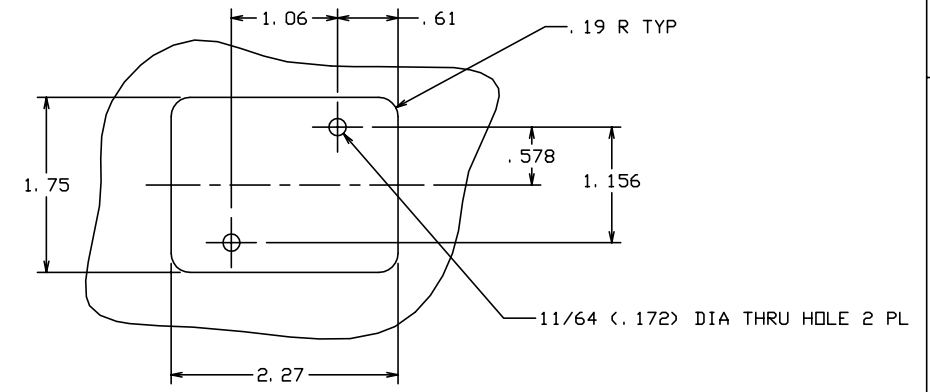
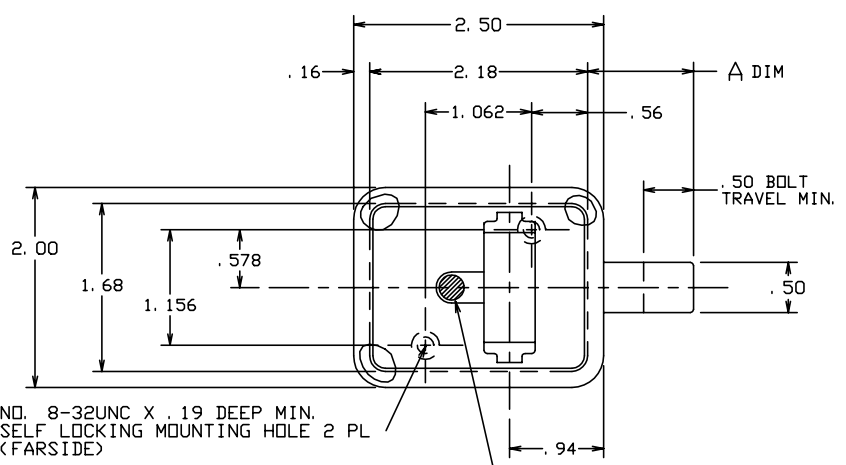


THE INFORMATION AND DESIGN HEREIN WAS ORIGINATED BY AND IS THE PROPERTY OF SKYLOCK INDUSTRIES INCORPORATED. SKYLOCK INDUSTRIES INCORPORATED RESERVES ALL PATENT, PROPRIETARY, DESIGN MANUFACTURING, REPRODUCTION, USE AND SALES RIGHTS THERE TO, AND TO ANY ARTICLE DISCLOSED THEREIN EXCEPT TO THE EXTENT RIGHTS ARE EXPRESSLY GRANTED TO OTHERS. THE FOREGOING DOES NOT APPLY TO VENDOR PROPRIETARY PARTS.

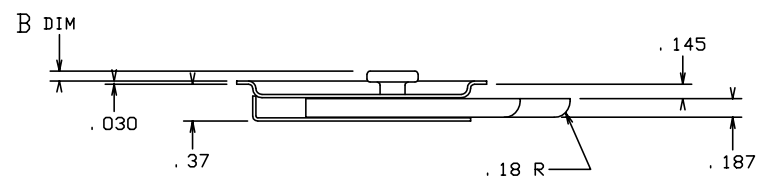
REVISIONS				
ZONE	LTR	DESCRIPTION	DATE	APPROVED
	NC	PRODUCTION RELEASE	9-14-92	T. C.

- NOTES: UNLESS OTHERWISE SPECIFIED.
- MAT'L: HANDLE; 6061-T6 ALUM. ALLOY, ALL OTHER COMPS; CRES.
  - FINISH: HANDLE; CLEAR ANODIZE, CRES.; CLEAN AND PASSIVATE.
  - DECORATIVE FINISH: SATIN BUFF.
  - STATIC LOAD 600 LBS.
  - BOLT IS DETENTED IN EXTENDED AND RETRACTED POSITIONS.



.00	.81	-19	LATCH		
.12	1.06	-17	LATCH		
.22	1.06	-15	LATCH		
.12	.88	-13	LATCH		
.12	.91	-11	LATCH		
.12	1.12	-9	LATCH		
.22	1.22	-7	LATCH		
.12	.69	-5	LATCH		
.12	.81	-3	LATCH		
.22	.81	-1	LATCH		

B DIM	A DIM	PART NO.	DESCRIPTION	MATERIAL	SIZE	SPECIFICATION	ITEM NO.
-------	-------	----------	-------------	----------	------	---------------	----------



PARTS LIST		DRAWN BY T. CSIK 9-14-92		SKYLOCK INDUSTRIES INCORPORATED MONROVIA CALIFORNIA U. S. A.	
UNLESS OTHERWISE SPECIFIED		CHECKED		<p>LATCH ASSY - DEADBOLT</p>	
DIMENSIONS ARE IN INCHES		ENGINEER			
TOLERANCES ON		PROJECT			
DECIMALS ANGLES DRILLED HOLES		APPROVAL T. CSIK 9-14-92			
.X ± .1 ± 0° 30' AND 10387		APPROVAL		<p>MATERIAL - FINISH USED ON</p>	
.XX ± .03		APPROVAL		<p>SIZE CODE IDENT. NO. DRAWING NO. REV.</p>	
.XXX ± .010		APPROVAL		<p>C 51941 20792 NC</p>	
DO NOT SCALE THIS DRAWING		APPROVAL		<p>SCALE 1:1 WT. SHEET 1 OF 1</p>	
MATERIAL - FINISH USED ON		APPROVAL			
NEXT ASSY		APPROVAL			
FINAL ASSY		APPROVAL			