

4

3

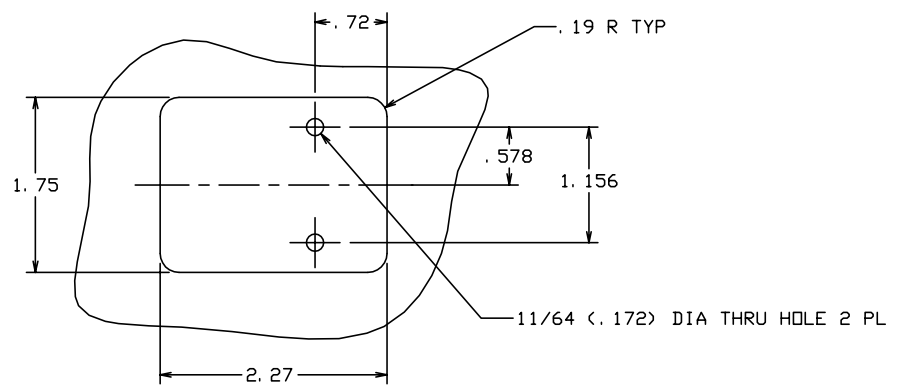
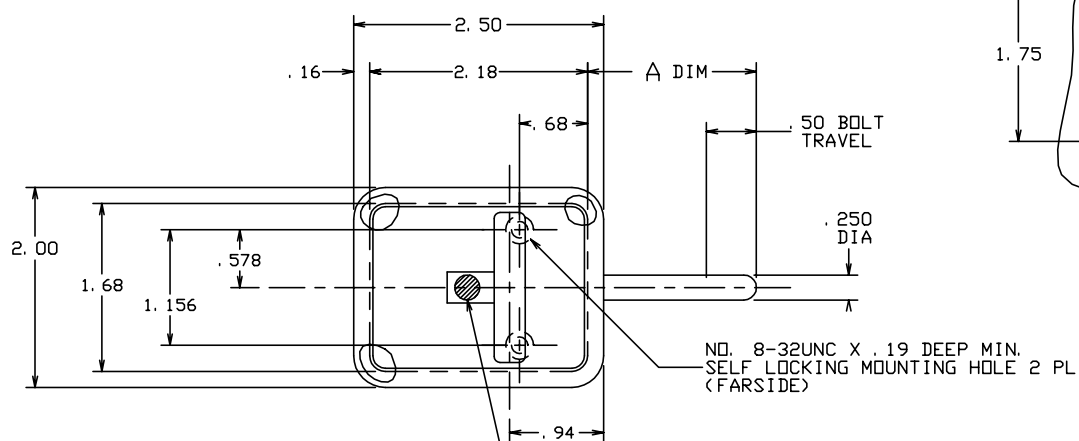
2

1

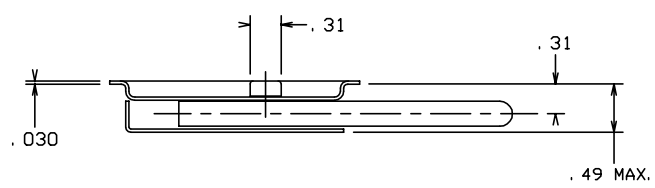
THE INFORMATION AND DESIGN HEREIN WAS ORIGINATED BY AND IS THE PROPERTY OF SKYLOCK INDUSTRIES INCORPORATED. SKYLOCK INDUSTRIES INCORPORATED RESERVES ALL PATENT, PROPRIETARY, DESIGN MANUFACTURING, REPRODUCTION, USE AND SALES RIGHTS THERE TO, AND TO ANY ARTICLE DISCLOSED THEREIN EXCEPT TO THE EXTENT RIGHTS ARE EXPRESSLY GRANTED TO OTHERS. THE FOREGOING DOES NOT APPLY TO VENDOR PROPRIETARY PARTS.


| REVISIONS | | | | |
|-----------|-----|--|---------|----------|
| ZONE | LTR | DESCRIPTION | DATE | APPROVED |
| | NC | PRODUCTION RELEASE | 2-16-95 | T. C. |
| | A | REVISED DOOR CUTOUT INFO. TO AGREE WITH ACTUAL MOUNTING HOLE PATTERN | 2-28-95 | T. C. |

- NOTES: UNLESS OTHERWISE SPECIFIED.
1. MAT'L: HANDLE; 6061-T6 ALUM. ALLOY, ALL OTHER COMPS; CRES.
 2. FINISH: CRES.; PASSIVATE, OR GLASS BEAD PEEN.
 3. DECORATIVE FINISH: SATIN BRUSH.
 4. BOLT IS DETENTED IN EXTENDED AND RETRACTED POSITION.



DOOR CUTOUT INFORMATION



| | | | | |
|-------------------------------|----------|------------------|-----------------------------|---|
| 1.69 | -1 | LATCH ASSY | | |
| A DIM | PART NO. | DESCRIPTION | MATERIAL SIZE SPECIFICATION | ITEM NO. |
| PARTS LIST | | | | |
| UNLESS OTHERWISE SPECIFIED | | DRAWN BY T. CSIK | 2-16-95 |  SKYLOCK INDUSTRIES INCORPORATED MONROVIA CALIFORNIA U. S. A. |
| DIMENSIONS ARE IN INCHES | | CHECKED | | |
| TOLERANCES ON | | ENGINEER | | |
| DECIMALS ANGLES DRILLED HOLES | | PROJECT | | |
| .X ± .1 ± 0° 30' AND 10387 | | APPROVAL T. CSIK | 2-16-95 | LATCH ASSY - DETENTED |
| .XX ± .03 | | | | |
| .XXX ± .010 | | | | |
| DO NOT SCALE THIS DRAWING | | | | |
| MATERIAL - FINISH | | USED ON | SIZE C | CODE IDENT. NO. 51941 |
| NEXT ASSY | | | DRAWING NO. 20841 | REV. A |
| FINAL ASSY | | | SCALE 1:1 | VT. SHEET 1 OF 1 |

4

3

2

1