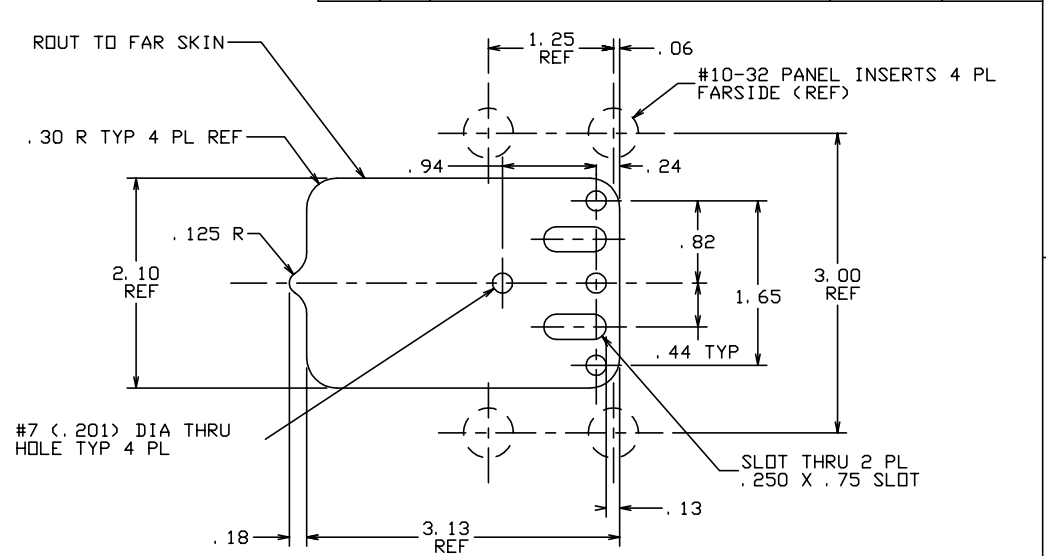
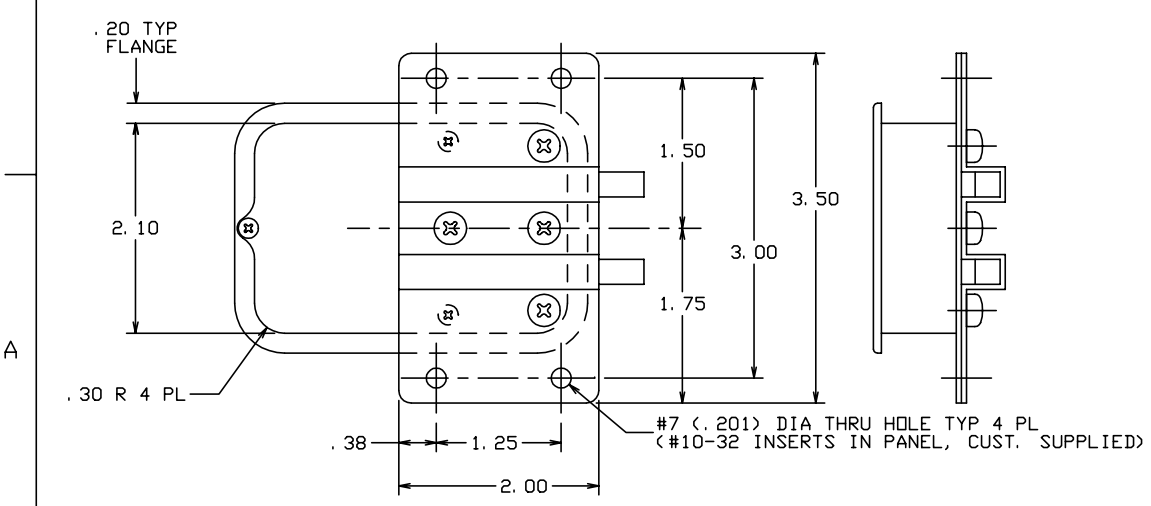
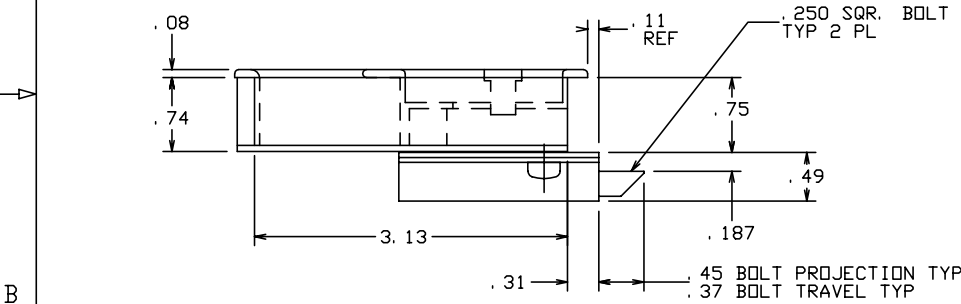
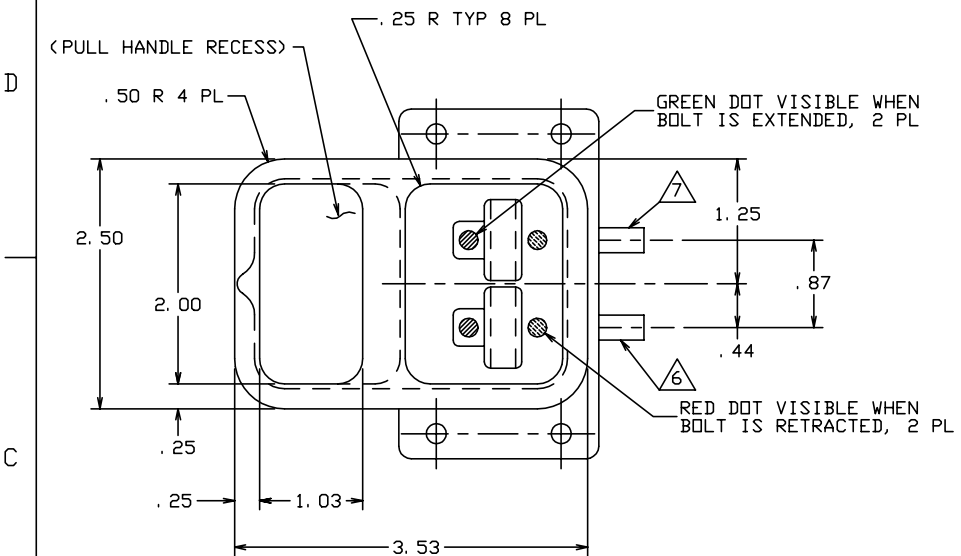


THE INFORMATION AND DESIGN HEREIN WAS ORIGINATED BY AND IS THE PROPERTY OF SKYLOCK INDUSTRIES INCORPORATED. SKYLOCK INDUSTRIES INCORPORATED RESERVES ALL PATENT, PROPRIETARY, DESIGN MANUFACTURING, REPRODUCTION, USE AND SALES RIGHTS THERE TO, AND TO ANY ARTICLE DISCLOSED THEREIN EXCEPT TO THE EXTENT RIGHTS ARE EXPRESSLY GRANTED TO OTHERS. THE FOREGOING DOES NOT APPLY TO VENDOR PROPRIETARY PARTS.

REVISIONS				
ZONE	LTR	DESCRIPTION	DATE	APPROVED
	NC	PRODUCTION RELEASE	7-28-93	T. CSIK



(PANEL CUTOUT INFORMATION)

NOTES: UNLESS OTHERWISE SPECIFIED.

1. REMOVE ALL BURRS AND BREAK SHARP EDGES.
2. MAT'L: HANDLE HOUSING ASSY COMPONENTS; ALUM. ALLOY, BOLT HOUSING ASSY COMPONENTS; ST. STL.
3. PROTECTIVE FINISH: ALUM. ALLOY COMPONENTS; CLEAR ANODIZE, ST. STL. COMPONENTS; PASSIVATE.
4. DECORATIVE FINISH: VISIBLE SURFACES; SATIN BUFF.
5. THREADS COATED WITH VC-3 VIBRATITE.
6. BOLT IS DETENTED IN EXTENDED AND RETRACTED POSITIONS (DEADBOLT).
7. BOLT IS SPRING LOADED AND ALWAYS FREE TO LATCH (SLAM).

-401 LATCH ASSY			
PART NO.	DESCRIPTION	MATERIAL SIZE SPECIFICATION	
PARTS LIST			
UNLESS OTHERWISE SPECIFIED	DRAWN BY T. CSIK	7-28-93	 SKYLOCK INDUSTRIES INCORPORATED MONROVIA CALIFORNIA U. S. A.
DIMENSIONS ARE IN INCHES	CHECKED		
TOLERANCES ON	ENGINEER		
DECIMALS ANGLES DRILLED HOLES	PROJECT		
.X ± .1 ± 0° 30' AND 10387	APPROVAL		LATCH ASSY-DOUBLE BOLT WITH PULL HANDLE
.XXX ± .010	APPROVAL T. CSIK	7-28-93	
DO NOT SCALE THIS DRAWING	USED ON	SIZE	CODE IDENT. NO.
MATERIAL - FINISH		C	51941
NEXT ASSY			20846
FINAL ASSY			NC
		SCALE 1:2	VT.
		SHEET 1 OF 1	