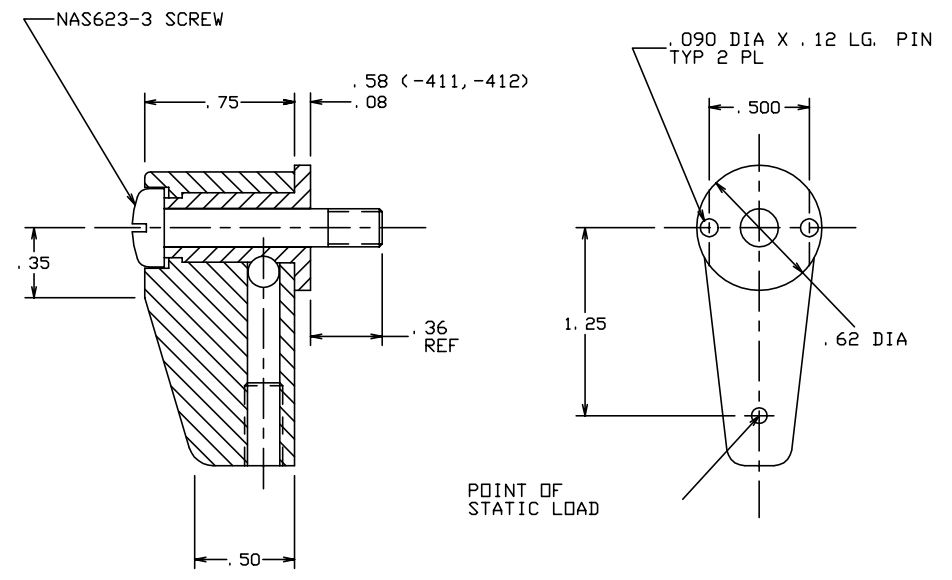
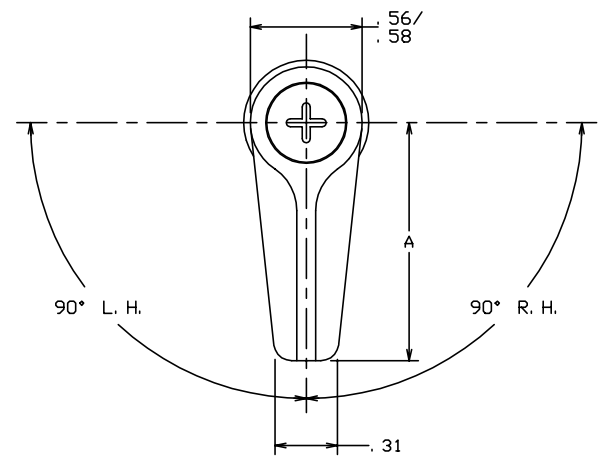


THE INFORMATION AND DESIGN HEREIN WAS ORIGINATED BY AND IS THE PROPERTY OF SKYLOCK INDUSTRIES INCORPORATED. SKYLOCK INDUSTRIES INCORPORATED RESERVES ALL PATENT, PROPRIETARY, DESIGN MANUFACTURING, REPRODUCTION, USE AND SALES RIGHTS THERE TO, AND TO ANY ARTICLE DISCLOSED THEREIN EXCEPT TO THE EXTENT RIGHTS ARE EXPRESSLY GRANTED TO OTHERS. THE FOREGOING DOES NOT APPLY TO VENDOR PROPRIETARY PARTS.

REVISIONS				
ZONE	LTR	DESCRIPTION	DATE	APPROVED
	NC	PRODUCTION RELEASE	2-15-94	T. CSIK

- NOTES: UNLESS OTHERWISE SPECIFIED.
1. REMOVE ALL BURRS AND BREAK SHARP EDGES.
 2. MAT'L: RETAINER; ALUM. ALLOY, ALL OTHER PARTS; 300 SERIES CRES.
 3. FINISH: ALUM.; ANODIZE, CRES PARTS; PASSIVATE.
 4. DECORATIVE FINISH: RETAINER; SATIN BUFF AND CLEAR ANODIZE PER MIL-A-8625.
 5. STATIC LOAD: 575 LBS. MAX.



1. 50	-413	RETAINER ASSY	<180° ROTATION>	
2. 00	-412	RETAINER ASSY	<90° RIGHT HAND>	
2. 00	-411	RETAINER ASSY	<90° LEFT HAND>	
. 90	-410	RETAINER ASSY	<90° RIGHT HAND>	
. 90	-409	RETAINER ASSY	<90° LEFT HAND>	
2. 00	-407	RETAINER ASSY	<180° ROTATION>	
2. 00	-406	RETAINER ASSY	<90° RIGHT HAND>	
2. 00	-405	RETAINER ASSY	<90° LEFT HAND>	
1. 75	-404	RETAINER ASSY	<90° RIGHT HAND>	
1. 75	-403	RETAINER ASSY	<90° LEFT HAND>	
1. 19	-402	RETAINER ASSY	<90° RIGHT HAND>	
1. 19	-401	RETAINER ASSY	<90° LEFT HAND>	

PARTS LIST		DIMENSIONS		APPROVAL		MATERIAL		DRAWING NO.	
1	50	1	50	1	50	1	50	1	50
UNLESS OTHERWISE SPECIFIED		DIMENSIONS ARE IN INCHES		DRAWN BY T. CSIK		2-15-94		SKYLOCK INDUSTRIES INCORPORATED MONROVIA CALIFORNIA U. S. A.	
TOLERANCES ON		DECIMALS ANGLES DRILLED HOLES		CHECKED				1/4 TURN RETAINER	
.X ± .1 ± 0° 30' AND 10387		.XX ± .03		ENGINEER					
.XXX ± .010				PROJECT					
DO NOT SCALE THIS DRAWING				APPROVAL T. CSIK		2-15-94			
MATERIAL - FINISH		USED ON		SIZE		CODE IDENT. NO.		DRAWING NO.	
NEXT ASSY				C		51941		20885	
FINAL ASSY				SCALE		2: 1		SHEET 1 OF 1	