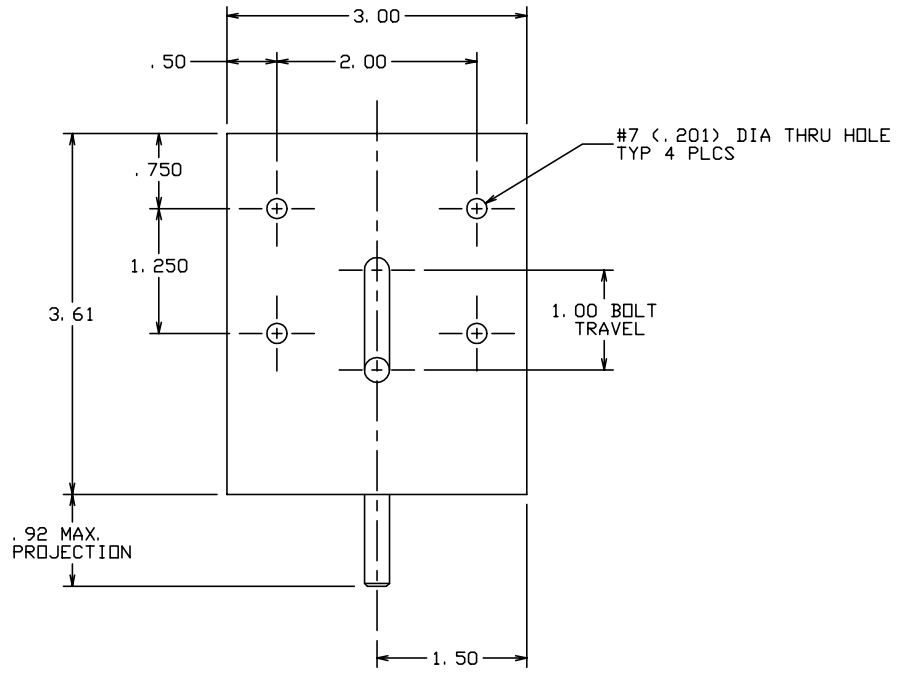
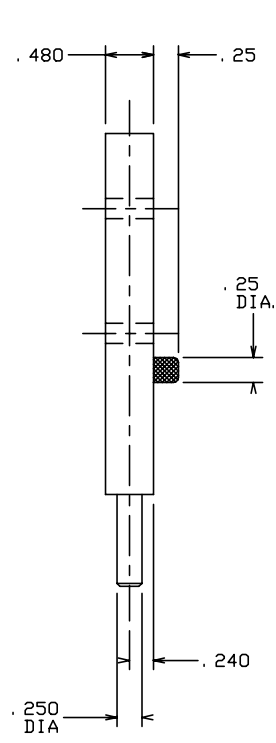



THE INFORMATION AND DESIGN HEREIN WAS ORIGINATED BY AND IS THE PROPERTY OF SKYLOCK INDUSTRIES INCORPORATED. SKYLOCK INDUSTRIES INCORPORATED RESERVES ALL PATENT, PROPRIETARY, DESIGN MANUFACTURING, REPRODUCTION, USE AND SALES RIGHTS THERE TO, AND TO ANY ARTICLE DISCLOSED THEREIN EXCEPT TO THE EXTENT RIGHTS ARE EXPRESSLY GRANTED TO OTHERS. THE FOREGOING DOES NOT APPLY TO VENDOR PROPRIETARY PARTS.

| REVISIONS | | | | |
|-----------|-----|--|---------|----------|
| ZONE | LTR | DESCRIPTION | DATE | APPROVED |
| | NC | PRODUCTION RELEASE | 3-21-94 | T. CSIK |
| | A | DIM. IS .250 DIA, WAS .312 DIA, REVISED PER CUSTOMER REQUEST | 4-18-94 | T. CSIK |



| | | | | | |
|--|------------------|-----------------------------|---|-------------|--------------|
| -1 SHEARPIN ASSY | | | | | |
| PART NO. | DESCRIPTION | MATERIAL SIZE SPECIFICATION | | | |
| PARTS LIST | | | | | |
| UNLESS OTHERWISE SPECIFIED | DRAWN BY T. CSIK | 3-21-94 |  SKYLOCK INDUSTRIES INCORPORATED MONROVIA CALIFORNIA U. S. A. | | |
| DIMENSIONS ARE IN INCHES | CHECKED | | | | |
| TOLERANCES ON | ENGINEER | | | | |
| DECIMALS ANGLES DRILLED HOLES | PROJECT | | | | |
| .X ± .1 ± 0° 30' AND 10387 .XX ± .03 .XXX ± .010 | APPROVAL T. CSIK | 3-21-94 | | | |
| DO NOT SCALE THIS DRAWING | APPROVAL | | | | |
| MATERIAL - FINISH | USED ON | SIZE | CODE IDENT. NO. | DRAWING NO. | REV. |
| NEXT ASSY | | C | 51941 | 20889 | A |
| FINAL ASSY | | SCALE | 1: 1 | VT. | SHEET 1 OF 1 |

5. BOLT IS REMOVABLE FOR MODIFICATIONS AS REQUIRED.
 4. BOLT IS DETENTED IN THE EXTENDED AND RETRACTED POSITIONS.
 3. FINISH: ALUM.; CLEAR ANODIZE PER MIL-A-8625, TYPE II, CLASS I.
 2. MAT'L: HOUSING, BOLT, KNOB; 2024-T4 ALUM. ALLOY.
 1. REMOVE ALL BURRS AND BREAK SHARP EDGES.
- NOTES: UNLESS OTHERWISE SPECIFIED.