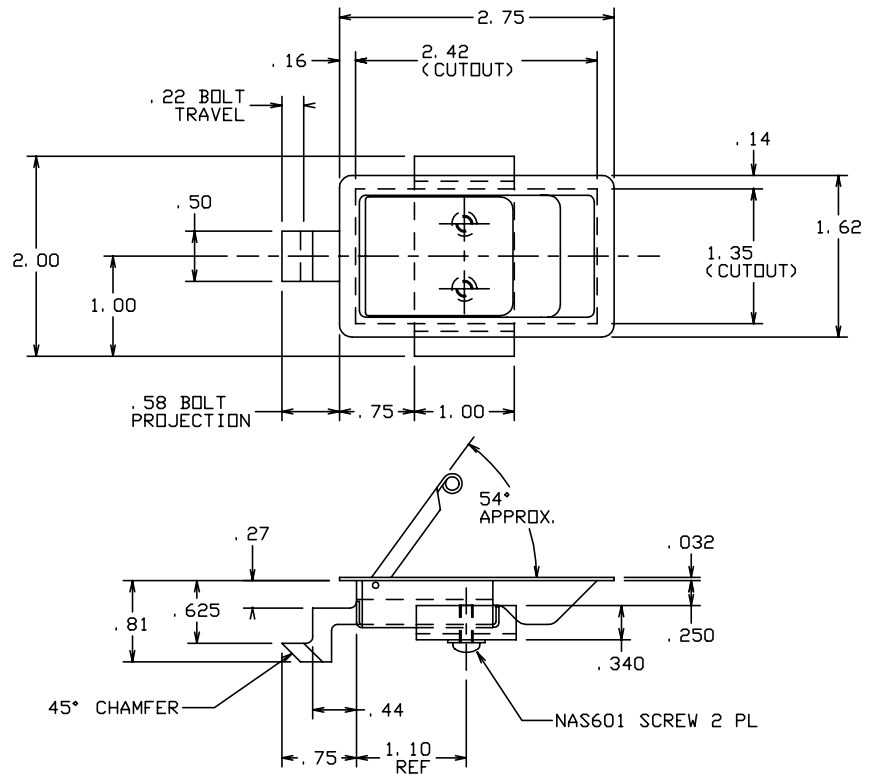


THE INFORMATION AND DESIGN HEREIN WAS ORIGINATED BY AND IS THE PROPERTY OF SKYLOCK INDUSTRIES INCORPORATED. SKYLOCK INDUSTRIES INCORPORATED RESERVES ALL PATENT, PROPRIETARY, DESIGN MANUFACTURING, REPRODUCTION, USE AND SALES RIGHTS THERE TO, AND TO ANY ARTICLE DISCLOSED THEREIN EXCEPT TO THE EXTENT RIGHTS ARE EXPRESSLY GRANTED TO OTHERS. THE FOREGOING DOES NOT APPLY TO VENDOR PROPRIETARY PARTS.

REVISIONS				
ZONE	LTR	DESCRIPTION	DATE	APPROVED
	NC	PRODUCTION RELEASE	4-19-94	T. CSIK

- NOTES: UNLESS OTHERWISE SPECIFIED.
- MAT'L: LATCH CASE AND FLAP; 300 SERIES CRES., BOLT AND BRACKET; BRASS.
 - FINISH: ST. STL. COMPONENTS; PASSIVATE.
 - DECORATIVE FINISH: SATIN BUFF TOP OF CASE AND HANDLE.
 - SPRING TO RETURN FLAP TO CLOSED POSITION REGARDLESS OF BOLT POSITION.
 - SPRING TO RETURN FLAP OPEN WHEN BOLT IS NOT PROPERLY ENGAGED.
 - LOAD CAPACITY: 100 LBS. MAX.



	-3	LATCH ASSY	
	-1	LATCH ASSY	
PART NO.	DESCRIPTION		
PARTS LIST			
UNLESS OTHERWISE SPECIFIED	DRAWN BY	T. CSIK	4-19-94
DIMENSIONS ARE IN INCHES	CHECKED		
TOLERANCES ON	ENGINEER		
DECIMALS ANGLES DRILLED HOLES	PROJECT		
.X ± .1 ± 0° 30' AND 10387	APPROVAL	T. CSIK	4-19-94
.XX ± .03	APPROVAL		
.XXX ± .010	APPROVAL		
DO NOT SCALE THIS DRAWING	USED ON		
MATERIAL - FINISH	USED ON	SIZE	CODE IDENT. NO.
NEXT ASSY		C	51941
FINAL ASSY			
		DRAWING NO.	20891
		REV.	NC
		SCALE	1: 1
		VT.	
		SHEET	1 OF 1

SKYLOCK INDUSTRIES INCORPORATED
MONROVIA CALIFORNIA U. S. A.

LATCH ASSEMBLY - SLAM