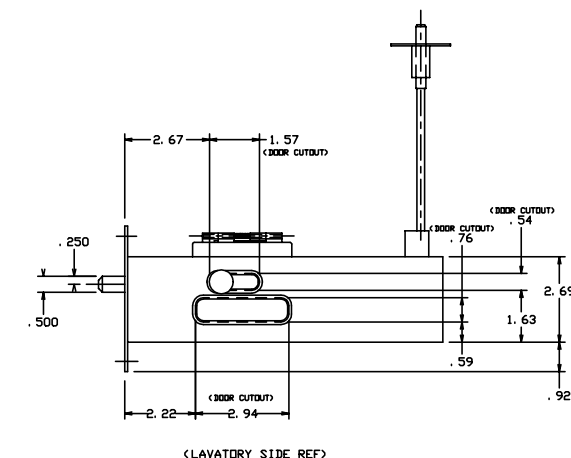
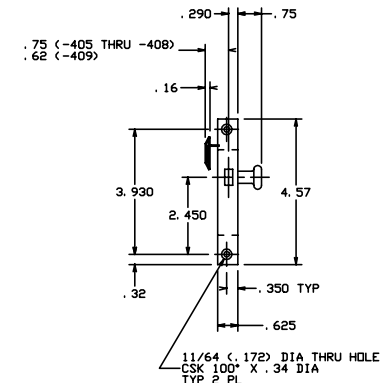
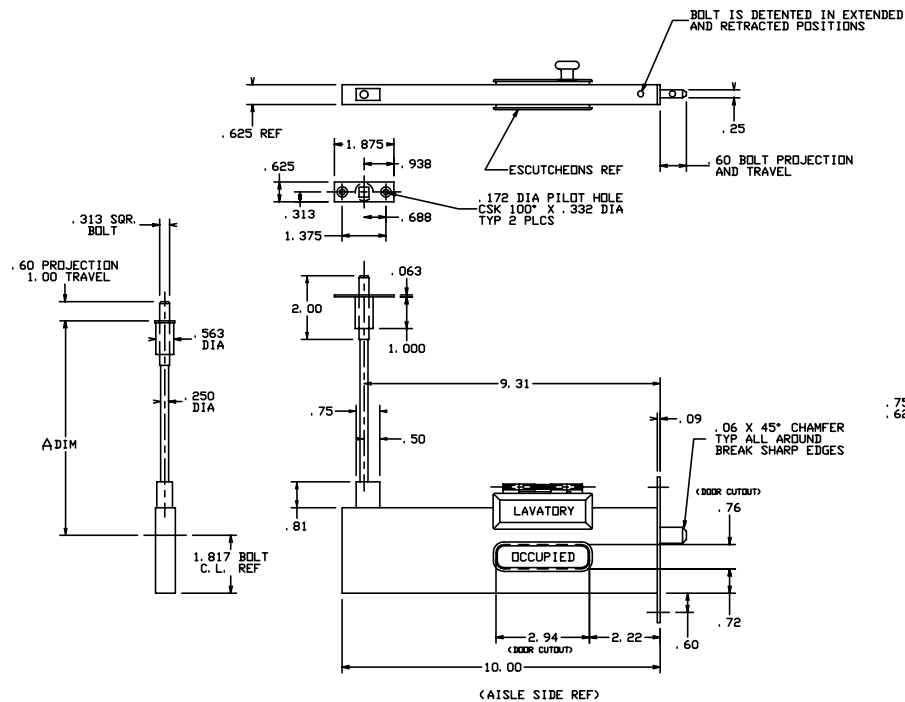


THE INFORMATION AND DESIGN HEREIN WAS ORIGINATED BY AND IS THE PROPERTY OF SKYLOK INDUSTRIES INCORPORATED. SKYLOK INDUSTRIES INCORPORATED RESERVES ALL PATENT, PROPRIETARY, DESIGN MANUFACTURING INFORMATION, USE AND SALES RIGHTS THEREIN, AND TO ANY ARTICLES DEVELOPED THEREIN EXCEPT TO THE EXTENT RIGHTS ARE EXPRESSLY GRANTED TO OTHERS. THE FOREGOING DOES NOT APPLY TO NON-PATENTABLE MATTER.

REVISIONS				
ZONE	LTR	DESCRIPTION	DATE	APPROVED
	NC	PRODUCTION RELEASE	5-19-94	T. C.
	A	ADDED DIM. 8.31	7-14-94	T. C.
	B	SEE ECN B	2-2-99	T. C.



8. PER FAR 45.15. PARTS WILL BE IDENTIFIED WITH:

1. FAA-PMA.
2. SKYLOK IND. INC.
3. PART NO.
4. AIRCRAFT ELIGIBILITY.

7. LATCH OPERATION: LAVATORY SIDE ACTUATOR KNOB EXTENDS AND RETRACTS BOLT. INDICATOR SIGN READS "VACANT" WHEN BOLT IS RETRACTED, AND "OCCUPIED" WHEN BOLT IS EXTENDED. FOR EMERGENCY ACCESS FROM AISLE SIDE, LIFT "LAVATORY" SIGN AND MOVE KNOB.

6. LIGHT FROM LAVATORY SIDE ILLUMINATES INDICATOR SIGN THRU TRANSLUCENT WINDOW.

5. LATCH IS SPRING BIASED TO THE EXTENDED OR RETRACTED POSITIONS.

4. INDICATOR SIGN: LETTERING TO BE CENTERED IN WINDOW, LETTERING STYLE - HELVETICA BOLD, LOWER CASE; LETTERING COLOR - BLACK, UNLESS OTHERWISE SPECIFIED; LETTERING SIZE - .25" HIGH.

3. PROTECTIVE FINISH: ALUM. - CLEAR ANODIZE; CRES - PASSIVATE.

2. DECORATIVE FINISH: ALL VISIBLE METAL SURFACES - SATIN BUFF.

1. MATERIAL: CASE ASSY, ACTUATOR KNOB - ALUM. ALLOY; INDICATOR SIGN AND WINDOW - DELRIN; BOLT AND ALL OTHER COMPONENTS - CRES.

NOTES: UNLESS OTHERWISE SPECIFIED.

'A' DIM. = 20.50 INCHES

EXAMPLE PART NO.: 20893-405-2050

	-409	INDICATOR LATCH	(SHOWN)	(.75 PANEL THICKNESS)
	-408	INDICATOR LATCH	(OPP. -407)	(1.00 PANEL THICKNESS)
	-407	INDICATOR LATCH	(SHOWN)	(1.00 PANEL THICKNESS)
	-406	INDICATOR LATCH	(OPP. -405)	(.75 PANEL THICKNESS)
	-405	INDICATOR LATCH	(SHOWN)	(.75 PANEL THICKNESS)
QTY REQD	PART NO.	DESCRIPTION	MATERIAL SIZE SPECIFICATION	
PARTS LIST				
UNLESS OTHERWISE SPECIFIED				
DIMENSIONS ARE IN INCHES				
TOLERANCES ON				
DECIMALS	ANGLES	DILLED HOLES		
.0001	± 0° 30'	AND 10007		
DRAWN BY T. CSIK		5-19-94	 SKYLOK INDUSTRIES INCORPORATED REDWOOD CALIFORNIA	
CHECKED D. VO		2/3/99		
ENGINEER T. CSIK		2/3/99		
MFG P. MATSUOKA		2/10/99		
QC J. VIVIRITO		2/24/99	INDICATOR LATCH	
DO NOT SCALE THIS DRAWING				
MATERIAL - FINISH	USED ON	SIZE	CODE IDENT. NO.	DRAWING NO.
		D	51941	20893
NEXT ASSY		SCALE	1:1	REV. B
FINAL ASSY		BY		SHEET 1 OF 1