

THE INFORMATION AND DESIGN HEREIN WAS DEVELOPED BY AND IS THE PROPERTY OF SOLID INDUSTRIES INCORPORATED. SOLID INDUSTRIES INCORPORATED RESERVES ALL PATENT, PROPRIETARY, DESIGN MANUFACTURING INFORMATION, USE AND SALES RIGHTS HEREIN, AND TO ANY ARTICLES DEVELOPED THEREIN EXCEPT TO THE EXTENT RIGHTS ARE EXPRESSLY GRANTED TO OTHERS. THE FOREGOING DOES NOT APPLY TO NON-PATENTABLE MATTER.

NOTES: UNLESS OTHERWISE SPECIFIED.

- REMOVE ALL BURRS AND BREAK SHARP EDGES.
- MAT'L REF.: INT. AND EXT. HANDLE; 6061-T6/T651 PER ASTM B221, OR EQUIV. ESCUTCHEON; LEXAN F6008, TEXTURE-HAIRCCELL P1, COLOR BLACK. ROD ASSY, MIXER ASSY, AND LATCHES; 303 CRES PER AMS-5640N OR EQUIV.
- FINISH REF.: ALUM. ALLOY; CLEAR ANODIZE PER MIL-A-8625 TYPE II, CLASS 1. ALUM. ALLOY (APPEARANCE SURFACES); SATIN BRUSH, CLEAR ANODIZE PER MIL-A-8625 TYPE II, CLASS 1. CRES PARTS; PASSIVATE PER QQ-P-35, TYPE II, OR EQUIV. EXTERIOR HANDLE; SATIN BRUSH, CLEAR ANODIZE PER MIL-A-8625, TYPE II, CLASS 1. (-421 THRU -424), EXTERIOR HANDLE; BRIGHT POLISH, AND BRIGHT CHROME PLATE PER QQ-C-320, TYPE I, CLASS 1. (-425 THRU -429).

ZONE	LTR	DESCRIPTION	DATE	APPROVED
	NC	PRODUCTION RELEASE	4-17-95	S. CSIK
	A	UPDATED PER FIRST ARTICLE	7-3-95	S. CSIK
	B	ADDED -403, -404 & REMOVED LOCK BUTTON REQD PER CUST. REQUEST. PICTORIALY UPDATED	8-24-95	S. CSIK
	C	UPDATED PER CUST. LBY407AASB88, AND LBY407AAS317	9-26-95	S. CSIK
	D	PER CUST. REQUEST FOR -401/-401 REMOVED 3164-203/-204, ADDED 3164-215/-216	11-20-95	S. CSIK
	E	CUST. REQUEST (PC1A5280) REPLACED -403/-404 WITH -425/-426. ADDED -407 THRU -410 ON SHIT. 2	7-1-97	T. CSIK
	F	REQD PER CUST. REQUEST, PERI DGNL REPLACED -411 THRU -419 WITH -411, -412, -415 THRU -480	10-30-97	T. CSIK
	G	REQD REQUEST IN PART, IS APPROXIMATELY APPROXIMATE. PROJECT IMPROVEMENT FOR VARIOUS COMPONENTS PER CUST. REQ.	3-23-98	T. CSIK
	H	SEE ECN H	9-29-98	T. CSIK
	J	SEE ECN J	10-16-98	T. CSIK
	K	SEE ECN K		

1										3161-203	INTERIOR HANDLE ASSY		28
	1									3160-208	EXTERIOR HANDLE ASSY (BRIGHT CHROME PLATE)		27
		1								3160-207	EXTERIOR HANDLE ASSY (BRIGHT CHROME PLATE)		26
	1	1	1	1	1	1	1	1	1	MS20392-2C7	PIN, STRAIGHT		25
			1							3226-6	LTNK		24
				1						3226-5	LTNK		23
					1					3164-216	RDD ASSY		22
						1				3164-215	RDD ASSY		21
	3	3	3	3	3	3	3	3	3	MS20392-2C13	PIN, STRAIGHT		20
	8	8	8	8	8	8	8	8	8	MS24665-151	PIN, COTTER		19
	8	8	8	8	8	8	8	8	8	AN960PD10L	WASHER		18
										3164-222	RDD ASSY		17
										3164-221	RDD ASSY		16
										3164-220	RDD ASSY		15
										3164-219	RDD ASSY		14
										3164-205	RDD ASSY		12
										3164-217	RDD ASSY		8
										3163-202	LATCH ASSY		7
										3163-201	LATCH ASSY		6
										3162-204	MIXER ASSY		5
										3162-203	MIXER ASSY		4
										3161-201	INTERIOR HANDLE ASSY		3
										3160-202	EXTERIOR HANDLE ASSY (SATIN BRUSH, CLR ANOD)		2
										3160-201	EXTERIOR HANDLE ASSY (SATIN BRUSH, CLR ANOD)		1

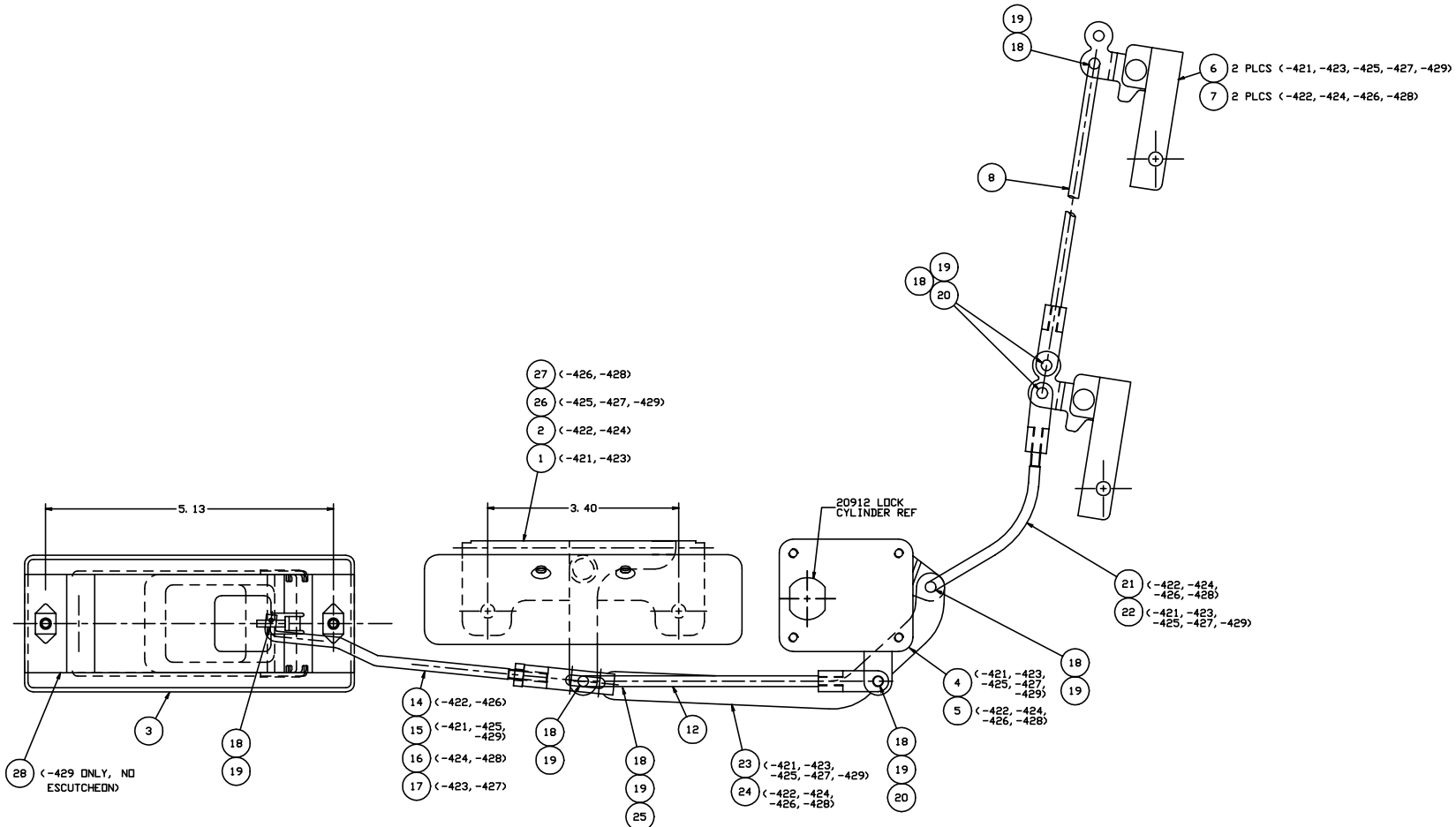
L.H. CREW	R.H. PASS	L.H. PASS	R.H. CREW	L.H. CREW	R.H. PASS	L.H. CREW	R.H. PASS	L.H. CREW	R.H. CREW	PART NO.	DESCRIPTION	MATERIAL	SIZE	SPECIFICATION	ITEM NO.
UNLESS OTHERWISE SPECIFIED										DRAWN BY T. CSIK 10-30-94					
DIMENSIONS ARE IN INCHES										CHECKED S. CSIK 10-30-94					
TOLERANCES ON										ENGINEER T. CSIK 10-14-98					
DECIMALS ANGLES DRILLED HOLES										PROJECT P. M. 10-14-98					
.0005 .001 .0015 .002 .003 .005 .010 .015 .020 .030 .040 .050 .060 .070 .080 .090 .100 .125 .150 .175 .200 .250 .300 .375 .450 .500 .625 .750 .875 .900 .950 .999										APPROVAL J. V. 10-14-98					
DO NOT SCALE THIS DRAWING										MATERIAL - FINISH USED ON					
NEXT ASSY										SIZE CODE ECN. NO. DRAWING NO. REV.					
FINAL ASSY										D 51941 20898 K					
										SCALE NONE 1 OF 2					

SOLID INDUSTRIES INCORPORATED
MONROVIA, CALIFORNIA

DOOR BOLTING SYSTEM

THE INFORMATION AND DESIGN HEREIN WAS ORIGINATED BY AND IS THE PROPERTY OF SYLDEX INDUSTRIES INCORPORATED. SYLDEX INDUSTRIES INCORPORATED RESERVES ALL PATENT, PROPRIETARY, DESIGN MANUFACTURING, REPRODUCTION, USE AND SALES RIGHTS HEREIN AND TO ANY ARTICLES DEVELOPED THEREIN EXCEPT TO THE EXTENT RIGHTS ARE EXPRESSLY GRANTED TO OTHERS. THE FOREGOING DOES NOT APPLY TO NON-PATENTABLE IDEAS.

REVISIONS				
ZONE	LTR	DESCRIPTION	DATE	APPROVED
		SEE SHT. 1 FOR NOTES		



(VIEW LOOKING INBOARD)

-421 (L. H. CREW) DOOR BOLTING SYSTEM (SHOWN)
 -422 (R. H. CREW) DOOR BOLTING SYSTEM (OPP.)
 -423 (L. H. PASS) DOOR BOLTING SYSTEM (SHOWN)
 -424 (R. H. PASS) DOOR BOLTING SYSTEM (OPP.)

-425 (L. H. CREW) DOOR BOLTING SYSTEM (SHOWN)
 -426 (R. H. CREW) DOOR BOLTING SYSTEM (OPP.)
 -427 (L. H. PASS) DOOR BOLTING SYSTEM (SHOWN)
 -428 (R. H. PASS) DOOR BOLTING SYSTEM (OPP.)
 -429 (L. H. CREW) DOOR BOLTING SYSTEM (SHOWN)

SYLDEX INDUSTRIES INCORPORATED
 REDWOOD CITY, CALIFORNIA

DOOR BOLTING SYSTEM

SIZE D	CODE IDENT. NO. 51941	DRAWING NO. 20898	REV. K
SCALE 1:2	VT.	SHEET 2 OF 2	