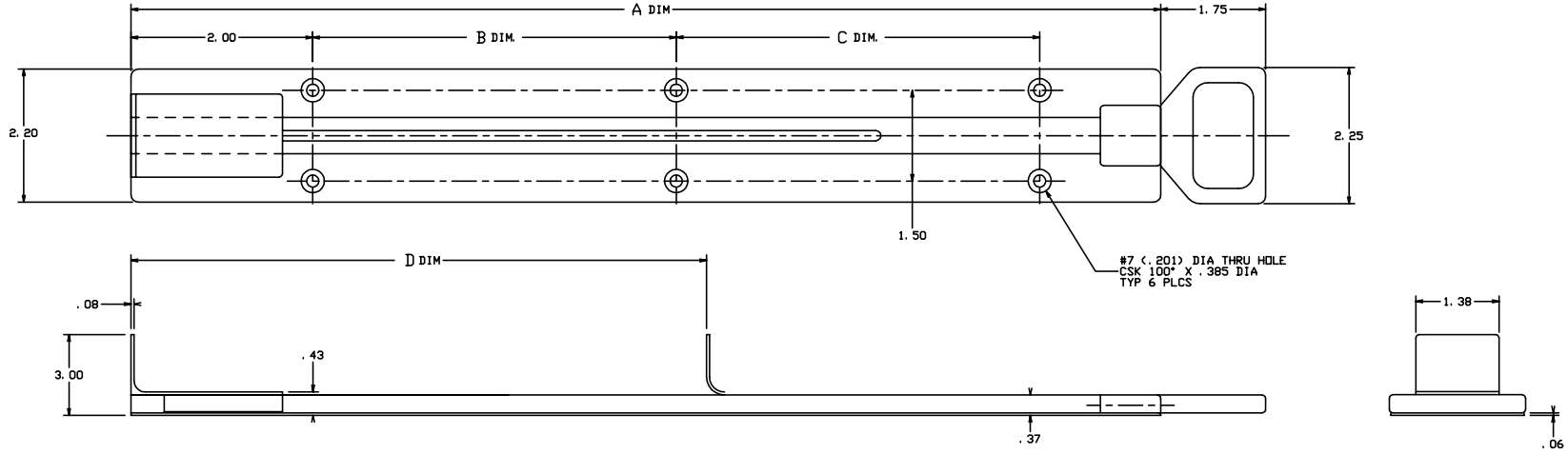


THE INFORMATION AND DESIGN HEREIN WAS ORIGINATED BY AND IS THE PROPERTY OF SOLDEX INDUSTRIES INCORPORATED. SOLDEX INDUSTRIES INCORPORATED RESERVES ALL PATENT, PROPRIETARY, DESIGN MANUFACTURING INFORMATION, AND SALES RIGHTS HEREIN, AND TO ANY ARTICLES DEVELOPED THEREIN EXCEPT TO THE EXTENT RIGHTS ARE EXPRESSLY GRANTED TO OTHERS. THE FOREGOING DOES NOT APPLY TO NON-PATENTABLE IDEAS.

NOTES: UNLESS OTHERWISE SPECIFIED.

1. REMOVE ALL BURRS AND BREAK SHARP EDGES.
2. MAT'L: TRACK; ALUM ALLOY, HANDLE, PLUG, BRACKET RETAINERS; PLASTIC, BUMPER; RUBBER, ALL OTHER COMPONENTS; ST. STL.
3. FINISH: ALUM.; CLEAR ANODIZE PER MIL-A-8625, TYPE II, CLASS I. ST. STL.; PASSIVATE PER QQ-P-35.
4. HANDLE AND BRACKET ARE SPRING LOADED TO THE RETRACTED POSITION.

REVISIONS				
ZONE	LTR	DESCRIPTION	DATE	APPROVED
NC		PRODUCTION RELEASE	9-13-94	T. C.



-403	EXTRACTOR ASSY	29.20	12.00	12.00	15.50
-401	EXTRACTOR ASSY	31.20	13.60	13.60	17.50
PART NO.	DESCRIPTION	A DIM.	B DIM.	C DIM.	D DIM.
PARTS LIST					
UNLESS OTHERWISE SPECIFIED		DRAWN BY T. CSIK		9-13-94	
DIMENSIONS ARE IN INCHES		CHECKED S. CSIK		9-13-94	
TOLERANCES ON		ENGINEER T. CSIK		9-13-94	
DECIMALS	ANGLES	DILLED HOLES	PROJECT		
.0005	± .01	± .0007	APPROVAL		
DO NOT SCALE THIS DRAWING		APPROVAL D. SHORT		9-13-94	
MATERIAL - FINISH		USED ON		SIZE D	CODE 51941
NEXT ASBY				DRAWING NO. 20903	REV. NC
FINAL ASBY				SCALE NONE	SHEET 1 OF 1

SOLDEX INDUSTRIES INCORPORATED
MORNINGVIEW, CALIFORNIA

EXTRACTOR ASSY