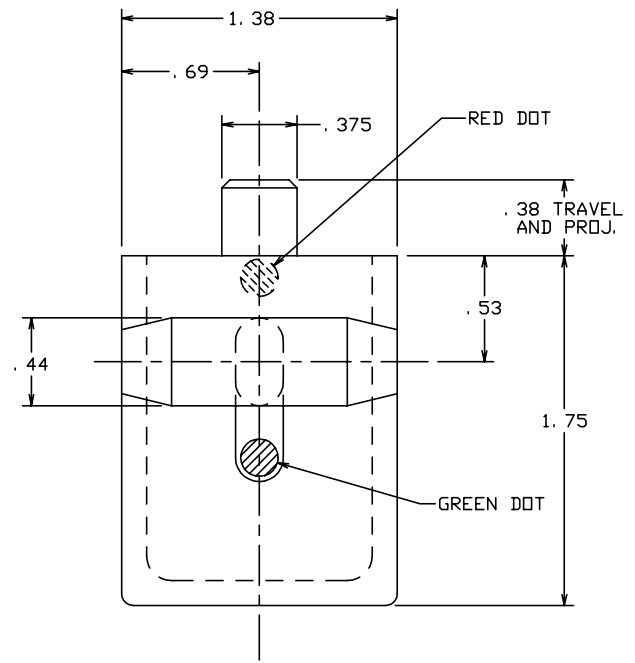
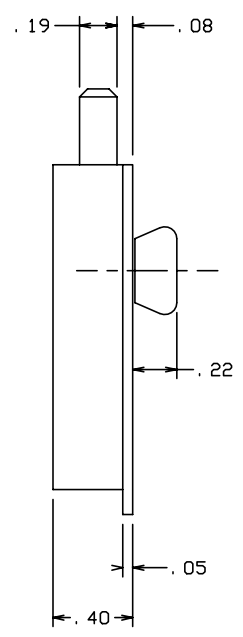
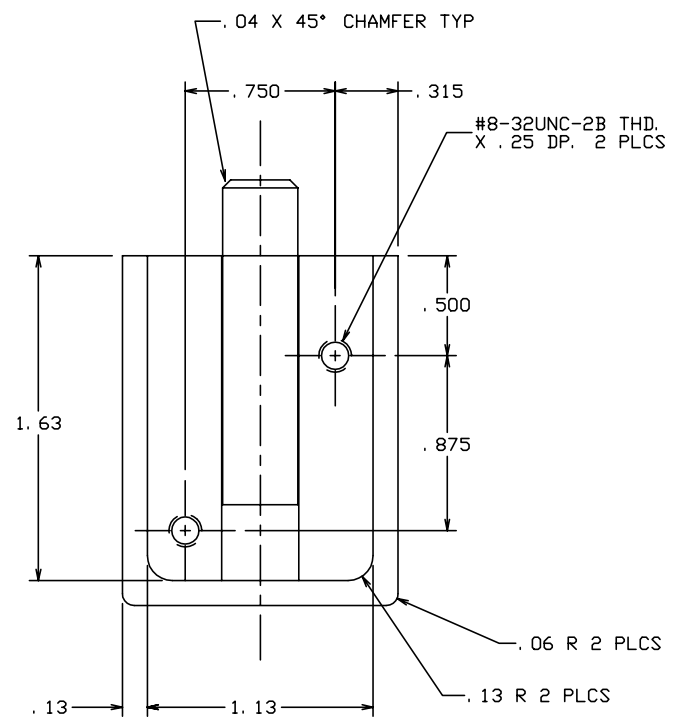



THE INFORMATION AND DESIGN HEREIN WAS ORIGINATED BY AND IS THE PROPERTY OF SKYLOCK INDUSTRIES INCORPORATED. SKYLOCK INDUSTRIES INCORPORATED RESERVES ALL PATENT, PROPRIETARY, DESIGN MANUFACTURING, REPRODUCTION, USE AND SALES RIGHTS THERE TO, AND TO ANY ARTICLE DISCLOSED THEREIN EXCEPT TO THE EXTENT RIGHTS ARE EXPRESSLY GRANTED TO OTHERS. THE FOREGOING DOES NOT APPLY TO VENDOR PROPRIETARY PARTS.

REVISIONS				
ZONE	LTR	DESCRIPTION	DATE	APPROVED
	NC	PRODUCTION RELEASE	11-28-94	T. CSIK
	A	REVERSED MOUNTING HOLE PATTERN	3-3-95	T. CSIK

- NOTES: UNLESS OTHERWISE SPECIFIED.
1. REMOVE ALL BURRS AND BREAK SHARP EDGES.
 2. MAT'L: HOUSING AND HANDLE - ALUM ALLOY, BOLT - 300 SERIES CRES.
 3. FINISH: HOUSING AND HANDLE - SATIN BRUSH, AND CLEAR ANODIZE. BOLT - PASSIVATE.
 4. LATCH IS DETENTED IN THE ENGAGED AND DISENGAGED POSITIONS.



-401 LATCH ASSY			
PART NO.	DESCRIPTION	MATERIAL	SIZE SPECIFICATION
PARTS LIST			
UNLESS OTHERWISE SPECIFIED	DRAWN BY T. CSIK	11-28-94	 SKYLOCK INDUSTRIES INCORPORATED MONROVIA CALIFORNIA U. S. A.
DIMENSIONS ARE IN INCHES	CHECKED		
TOLERANCES ON	ENGINEER		
DECIMALS ANGLES DRILLED HOLES	PROJECT		
.X ± .1 ± 0° 30' AND 10387	APPROVAL T. CSIK	11-28-94	LATCH ASSY
.XX ± .03	APPROVAL		
.XXX ± .010			
DO NOT SCALE THIS DRAWING	USED ON	SIZE	CODE IDENT. NO. DRAWING NO. REV.
MATERIAL - FINISH		C	51941 20905 A
NEXT ASSY		SCALE	1: 1
FINAL ASSY		WT.	SHEET 1 OF 1