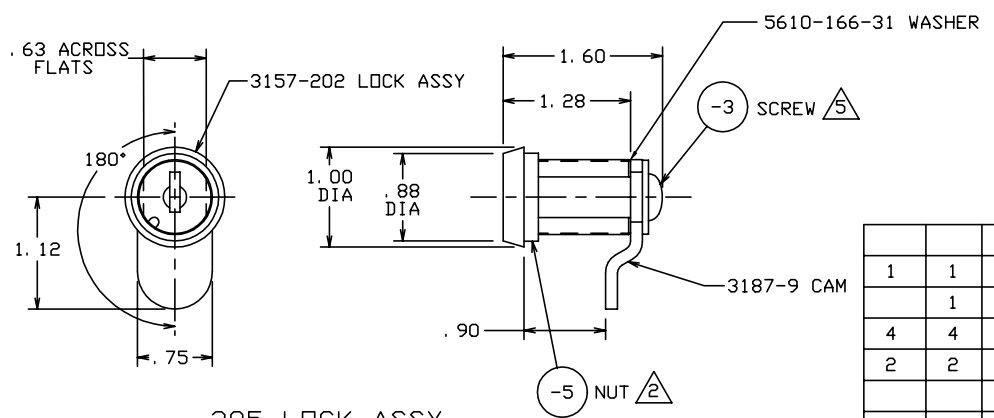


THE INFORMATION AND DESIGN HEREIN WAS ORIGINATED BY AND IS THE PROPERTY OF SKYLOCK INDUSTRIES INCORPORATED. SKYLOCK INDUSTRIES INCORPORATED RESERVES ALL PATENT, PROPRIETARY, DESIGN MANUFACTURING, REPRODUCTION, USE AND SALES RIGHTS THERE TO, AND TO ANY ARTICLE DISCLOSED THEREIN EXCEPT TO THE EXTENT RIGHTS ARE EXPRESSLY GRANTED TO OTHERS. THE FOREGOING DOES NOT APPLY TO VENDOR PROPRIETARY PARTS.

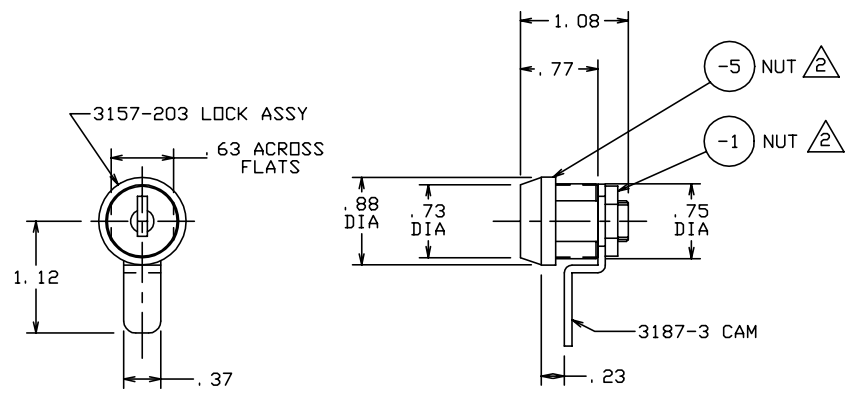
REVISIONS				
ZONE	LTR	DESCRIPTION	DATE	APPROVED
	J	SEE ECN J	3/10/99	T. CSIK
	K	SEE ECN K	3/31/99	T. CSIK

NOTES: UNLESS OTHERWISE SPECIFIED.

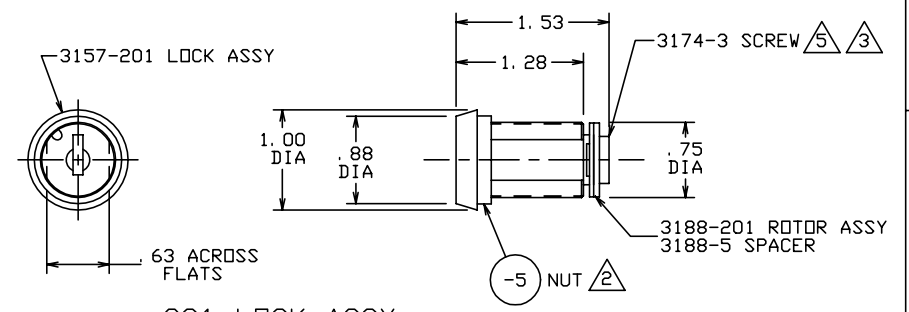
- EACH -401 LOCKSET TO BE KEYED ALIKE.
- APPLY #242 BLUE LOCTITE TO THREADS AT INSTALLATION.
- ENSURE FREE ROTATION OF MATING CAM (REF. 3162 & 3187) AT-INSTALLATION. IF NEEDED, BACK OFF 3174 SCREW APPROX. 1/4 TURN.
- PER FAR 45.15. PARTS WILL IDENTIFIED WITH:
  - FAA-PMA.
  - SKYLOCK IND. INC.
  - PART NO.
  - AIRCRAFT ELIGIBILITY.
- APPLY NICKEL-PLATE HIGH TEMP. ANTI-SEIZE COMPOUND TO THREADS AT ASSY.



**-205 LOCK ASSY**  
(USED ON BAGGAGE DOOR)



**-203 LOCK ASSY**  
(USED ON 20899 LITTER DOOR)



**-201 LOCK ASSY**  
(USED ON 20898 CREW/PASS. DOORS)

QTY	QTY	QTY	QTY	QTY	PART NO.	DESCRIPTION	MATERIAL	SIZE	SPECIFICATION
		1			5610-166-31	WASHER			P/N OF SEASTROM MFG.
1	1	-			-205	LOCK ASSY			
	1	-			-203	LOCK ASSY			
4	4				-201	LOCK ASSY			
2	2				1289	KEY			<SUPPLIED WITH 1702 AND 3786 LOCK, CHICAGO LOCK CO.>
		1			3187-9	CAM			
		1			3157-202	LOCK ASSY			
			1		3187-201	CAM ASSY			
			1		3157-201	LOCK ASSY			
				1	3188-5	SPACER			
				1	3188-203	ROTOR ASSY			
				1	3174-3	SCREW			
				1	3157-201	LOCK ASSY			
	1	1	1		-5	NUT			<NUT SUPPLIED WITH 1702 LOCK>
	1				-3	SCREW			<SCREW SUPPLIED WITH 1702 LOCK>
			1		-1	NUT			<5/16-18 NUT SUPPLIED WITH 3786 LOCK, CHICAGO LOCK CO.>
-403	-401	-205	-203	-201	PART NO.	DESCRIPTION	MATERIAL SIZE SPECIFICATION		

PARTS LIST			
UNLESS OTHERWISE SPECIFIED	DRAWN BY	T. CSIK	4-18-95
DIMENSIONS ARE IN INCHES	CHECKED	T. CSIK	12-15-95
TOLERANCES ON	ENGINEER	T. CSIK	12-15-98
DECIMALS	MFG	J. VIVIRITO	12-16-98
ANGLES	QC	P. MATSUOKA	12-15-98
DRILLED HOLES	SKYLOCK INDUSTRIES INCORPORATED MONROVIA CALIFORNIA U. S. A.		
.X ± .1 ± 0° 30' AND 10387			
.XX ± .03	<div style="text-align: center; font-size: 2em; font-weight: bold;">LOCKSET</div>		
.XXX ± .010			
DO NOT SCALE THIS DRAWING			
MATERIAL - FINISH	USED ON	SIZE	CODE IDENT. NO.
NEXT ASSY		C	51941
MANUFACTURE IN ACCORDANCE WITH SKYLOCK IND. INC., QUALITY CONTROL MANUAL QC.001		DRAWING NO.	REV.
		20912	K
SCALE 2:1		VT.	SHEET 1 OF 1