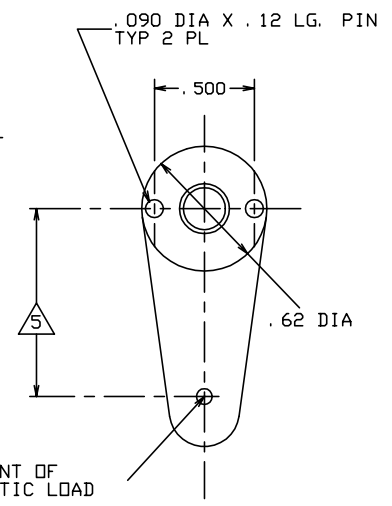
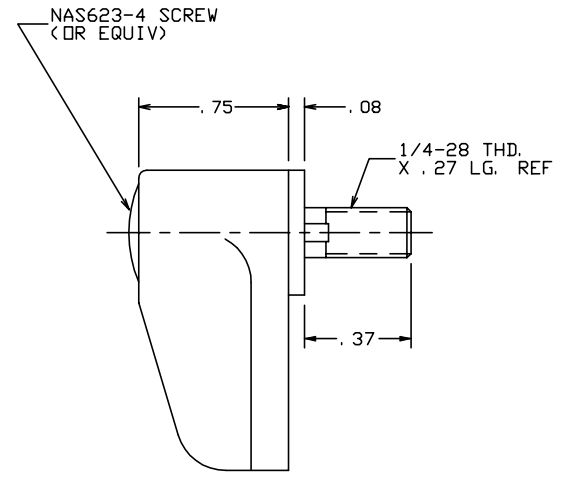
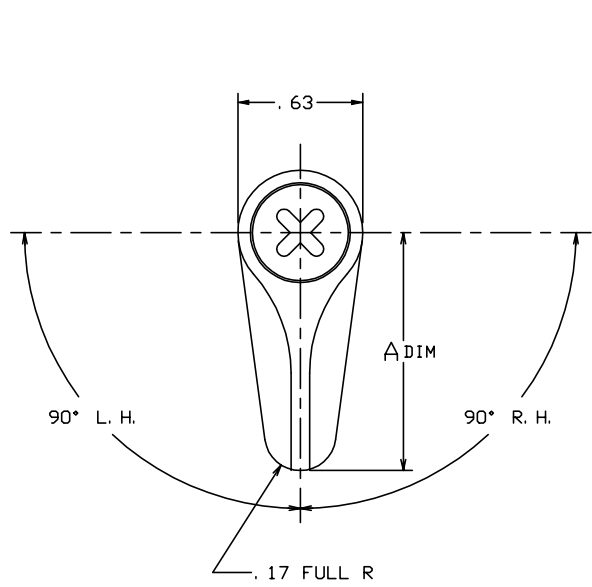


THE INFORMATION AND DESIGN HEREIN WAS ORIGINATED BY AND IS THE PROPERTY OF SKYLOCK INDUSTRIES INCORPORATED. SKYLOCK INDUSTRIES INCORPORATED RESERVES ALL PATENT, PROPRIETARY, DESIGN MANUFACTURING, REPRODUCTION, USE AND SALES RIGHTS THERE TO, AND TO ANY ARTICLE DISCLOSED THEREIN EXCEPT TO THE EXTENT RIGHTS ARE EXPRESSLY GRANTED TO OTHERS. THE FOREGOING DOES NOT APPLY TO VENDOR PROPRIETARY PARTS.

REVISIONS				
ZONE	LTR	DESCRIPTION	DATE	APPROVED
	NC	PRODUCTION RELEASE	9-29-97	T. CSIK
	A	ADDED -405 THRU -407	10-2-97	T. CSIK

NOTES: UNLESS OTHERWISE SPECIFIED.

- REMOVE ALL BURRS AND BREAK SHARP EDGES.
 - MAT'L: RETAINER; ALUM. ALLOY, ALL OTHER PARTS; 300 SERIES CRES.
 - FINISH: ALUM.; ANODIZE, CRES PARTS; PASSIVATE.
 - DECORATIVE FINISH: RETAINER; BRIGHT BUFF AND CANDY APPLE RED ANODIZE.
- △ STATIC LOAD: 1100 LBS. @ 1.00", .25" DEFLECTION (FASTENER FAILURE @ 1260 LBS.).



3.00	-407	RETAINER ASSY	<180°	
3.00	-406	RETAINER ASSY	<90° RIGHT HAND	
3.00	-405	RETAINER ASSY	<90° LEFT HAND	
1.19	-403	RETAINER ASSY	<180°	
1.19	-402	RETAINER ASSY	<90° RIGHT HAND	
1.19	-401	RETAINER ASSY	<90° LEFT HAND	

A DIM	PART NO.	DESCRIPTION	MATERIAL	SIZE	SPECIFICATION	ITEM NO.
PARTS LIST						
UNLESS OTHERWISE SPECIFIED		DRAWN BY T. CSIK		7-21-97		
DIMENSIONS ARE IN INCHES		CHECKED		SKYLOCK INDUSTRIES INCORPORATED MONROVIA CALIFORNIA U. S. A.		
TOLERANCES ON		ENGINEER		1/4 TURN RETAINER		
DECIMALS ANGLES DRILLED HOLES		PROJECT				
.XX ± .01 ± 0° 30' AND 10387		APPROVAL				
.XXX ± .010		APPROVAL				
DO NOT SCALE THIS DRAWING						
MATERIAL - FINISH		USED ON		SIZE	CODE IDENT. NO.	DRAWING NO.
NEXT ASSY				C	51941	20941
FINAL ASSY				SCALE	2: 1	VT.
				SHEET 1		OF 1