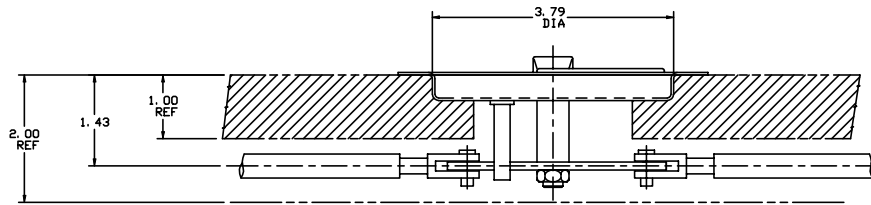
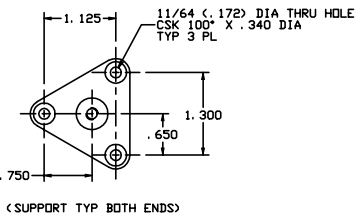
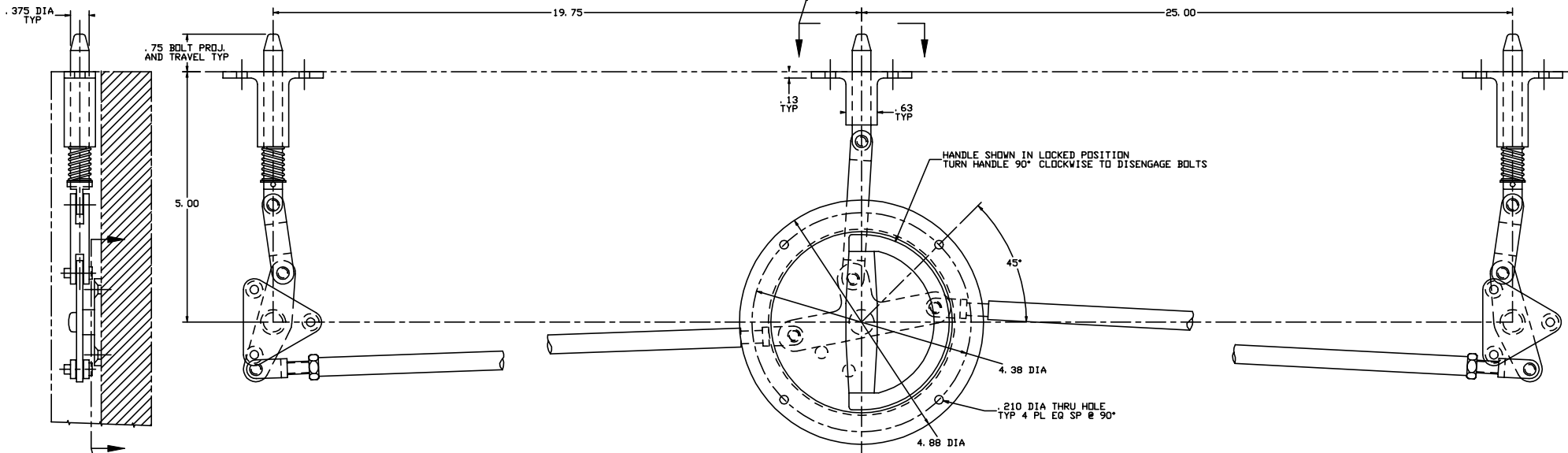
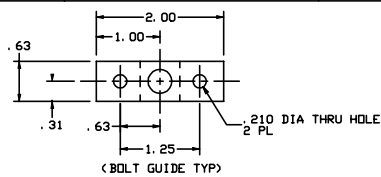


THE INFORMATION AND DESIGN HEREIN WAS DEVELOPED BY AND IS THE PROPERTY OF SKYLOCK INDUSTRIES INCORPORATED. SKYLOCK INDUSTRIES INCORPORATED RESERVES ALL PATENT, PROPRIETARY, DESIGN MANUFACTURING INFORMATION, USE AND SALES RIGHTS HEREIN, AND TO ANY ARTICLES DERIVED THEREIN EXCEPT TO THE EXTENT RIGHTS ARE EXPRESSLY GRANTED TO OTHERS. THE FOREGOING DOES NOT APPLY TO NON-PATENTABLE PARTS.

NOTES: UNLESS OTHERWISE SPECIFIED.

1. REMOVE ALL BURRS AND BREAK SHARP EDGES.
2. MAT'L: CRES - ESCUTCHEON, BOLTS, BOLT GUIDES, SPINDLE, SPRINGS AND HARDWARE.
AL ALY - HANDLE ASSY, BELLCRANKS, CONNECTING TUBES, SUPPORT PLATES AND CLEVISSES.
3. FINISH: CRES - PASSIVATE PER QQ-P-35.
AL ALY - CLEAR ANODIZE PER MIL-A-8625.
4. DECORATIVE FINISH: POWDER COAT VISIBLE SURFACES AS DEFINED ON CUSTOMER PURCHASE ORDER. CUSTOMER WILL PROVIDE POWDER COAT MATERIAL, AND DEFINE SOURCE FOR PROCESSING.

REVISIONS				
ZONE	LTN	DESCRIPTION	DATE	APPROVED
NC		PRODUCTION RELEASE	8-1-97	T. C.



-401 DOOR BOLTING SYS.		MATERIAL SIZE SPECIFICATION		ITEM NO.
QTY REQD	PART NO.	DESCRIPTION		
PARTS LIST				
UNLESS OTHERWISE SPECIFIED		DRAWN BY	T. CSIK	7-29-97
DIMENSIONS ARE IN INCHES		CHECKED		
TOLERANCES ON		SKYLOCK INDUSTRIES INCORPORATED MONROVIA CALIFORNIA		
DECIMALS	ANGLES	DRIILLED HOLES		
PROJECT		DOOR BOLTING SYSTEM, FREIGHT COMPARTMENT		
APPROVAL				
DO NOT SCALE THIS DRAWING				
MATERIAL - FINISH	USED ON	SIZE	CODE IDENT. NO.	DRAWING NO.
NEXT ASSY		D	51941	20943
FINAL ASSY		SCALE	1:2	REV. NC
		PL.		SHEET 1 OF 1