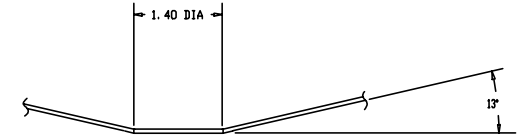


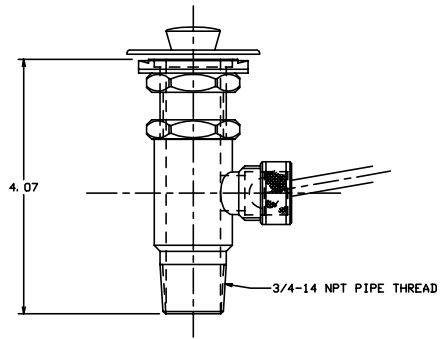
THE INFORMATION AND DESIGN HEREIN WAS ORIGINATED BY AND IS THE PROPERTY OF SKYLOX INDUSTRIES INCORPORATED. SKYLOX INDUSTRIES INCORPORATED RESERVES ALL PATENT, PROPRIETARY, DESIGN MANUFACTURING, REPRODUCTION, USE AND SALES RIGHTS HEREIN, AND TO ANY PATENTS DISCLOSED THEREIN EXCEPT TO THE EXTENT RIGHTS ARE EXPRESSLY GRANTED TO OTHERS. THE FOREGOING DOES NOT APPLY TO NON-PATENT PROPRIETARY PARTS.

REVISIONS				
ZONE	LR	DESCRIPTION	DATE	APPROVED
NC		PRODUCTION RELEASE	7-20-93	TC

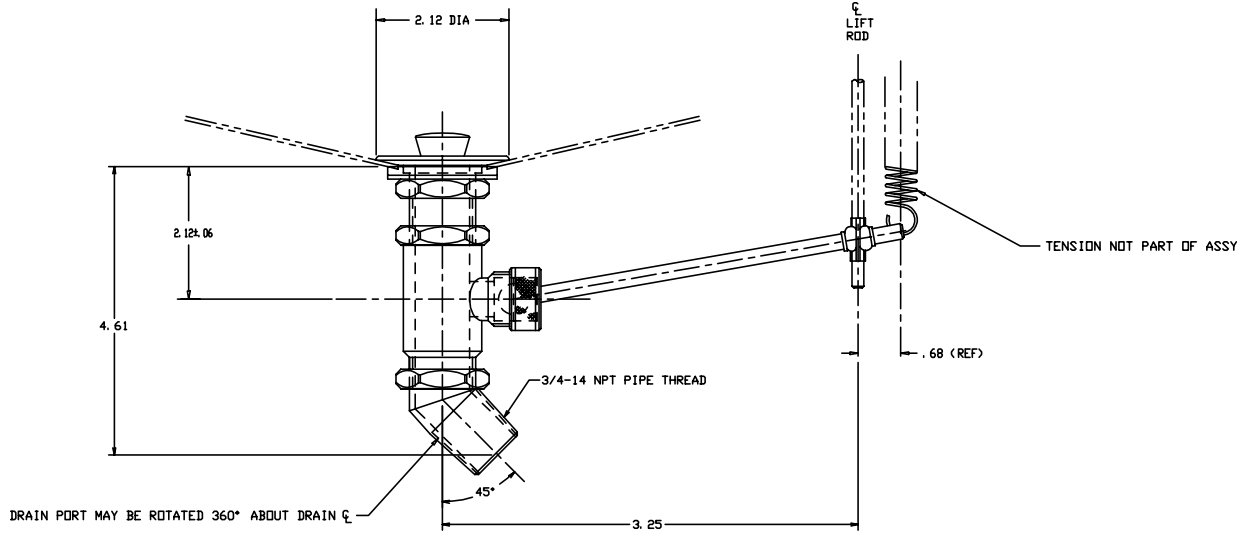
- NOTES: UNLESS OTHERWISE SPECIFIED
1. REMOVE ALL BURRS AND SHARP EDGES
 2. MAT'L: SINK FLANGE, BODY, DRAIN TUBE, ACTUATING ROD, AND POPPET; CRES; SEALS AND GASKETS; RUBBER; ACTUATING BALL AND HOUSING; NYLON
 3. FINISH ALL VISIBLE SURFACES SHALL BE SATIN BRUSHED



SINK-DRAIN CUTOUT



-403 DRAIN ASSY
(SAME AS -401 EXCEPT AS SHOWN)



-401 DRAIN ASSY (SHOWN)

-403		DRAIN ASSY			
-401		DRAIN ASSY			
QTY REQ'D	PART / INCH NO.	DESCRIPTION	MATERIAL / SPECIFICATION		ITEM NO.
UNLESS OTHERWISE SPECIFIED TOLERANCES ARE IN INCHES			CONTRACT NO.		SKYLOX INDUSTRIES INCORPORATED MENDOCINO, CALIFORNIA, USA
TOLERANCES			DATE		
DECIMALS	FRAC	ANGULAR	DRWN BY	DATE	DRAIN ASSY
.001	1/32	0 DEG	T. CSIK	7-19-93	
NO KEY SCALE DRAWING		CHECK			
NEXT ASSY	FINISH ASSY	SECTION			
USED ON	DESIGN ACTIVITY		SIZE	FIG. NO.	DRAWING NO.
FINISH	ACT WT	CALC WT	CUSTOMER	D	51941
			SCALE	1/1	90076
			RELEASE DATE	7-20-93	NC
			SHEET	1	OF 1